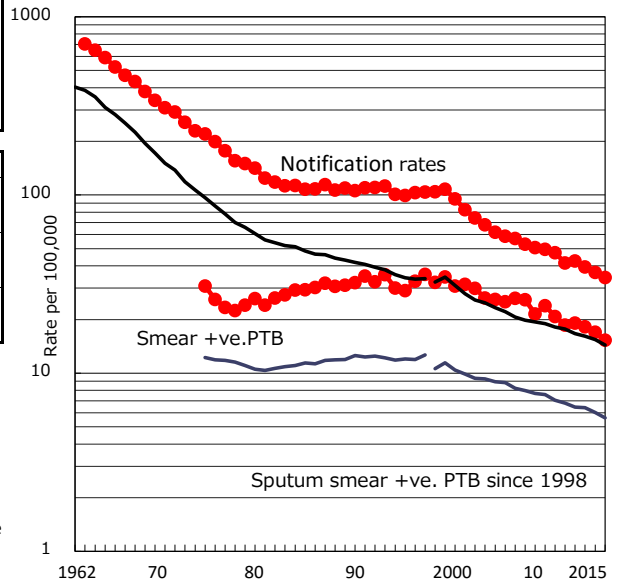


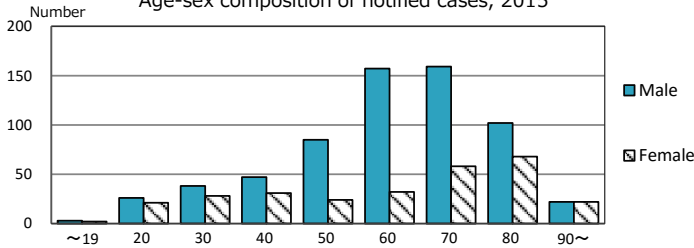
TB statistics in 2015 (Population in Osaka 2,691,742)	
Among newly notified : (Japan)	
Foreign borns	37 4.0% (6.4%)
TB cases with homeless history	34 3.7% (0.9%)
Male aged 35-59, without job and receiving public assistance	40 23.5% (9.0%)

Trends	'11	'12	'13	'14	'15
Notified cases	1,109	1,142	1,058	988	925
Rate per 100,000 population	41.5	42.7	39.4	36.8	34.4
Sputum smear +ve. PTB	497	512	488	456	412
Rate per 100,000 population	18.6	19.1	18.2	17.0	15.3
Latent Tuberculosis Infection	250	278	275	263	274
Rate per 100,000 population	9.4	10.4	10.2	9.8	10.2

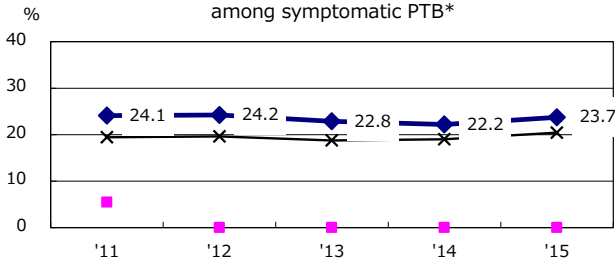
Trends of TB notification rates, all forms and smear +ve. PTB



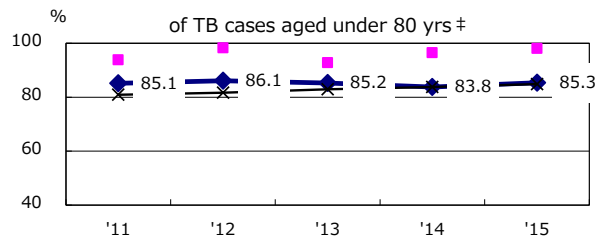
Age-sex composition of notified cases, 2015



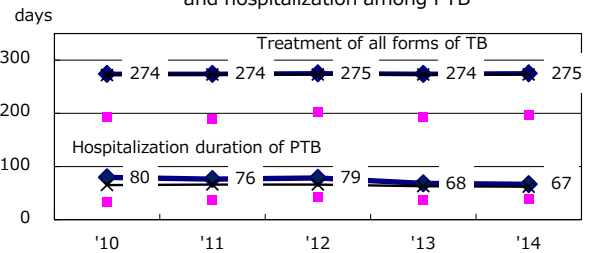
Proportion of cases with total diagnosis delay (> 3 mths) among symptomatic PTB*



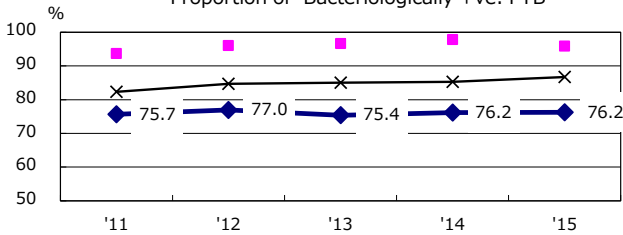
Proportion of TX with HRZ-E/S among all forms of TB cases aged under 80 yrs †



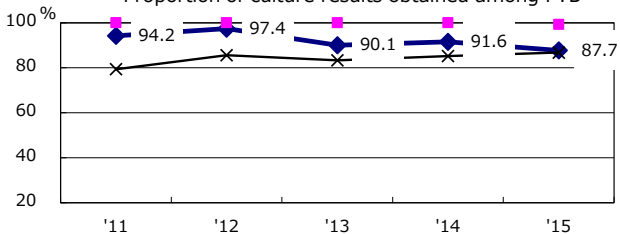
Median duration of treatment of all forms and hospitalization among PTB



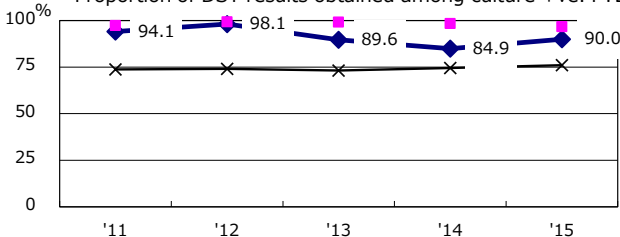
Proportion of Bacteriologically +ve. PTB



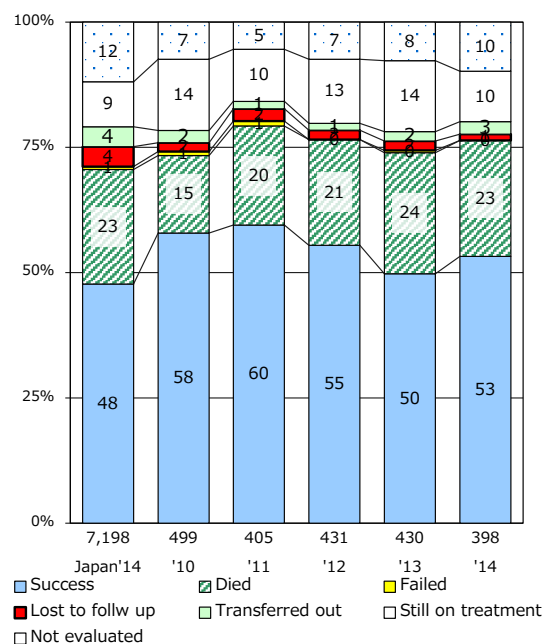
Proportion of culture results obtained among PTB



Proportion of DST results obtained among culture +ve. PTB



Treatment outcomes of new sputum smear +ve. TB



PTB : pulmonary TB

† Excluding unknown delay(%)	'11	'12	'13	'14	'15
	1.2	3.1	10.7	9.0	39.0

‡ Excluding unknown Tx(%)	'11	'12	'13	'14	'15
	1.3	2.5	3.5	2.6	3.2