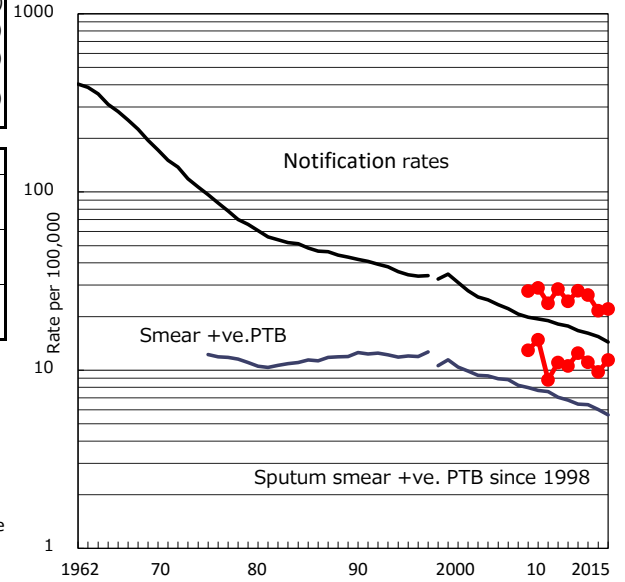


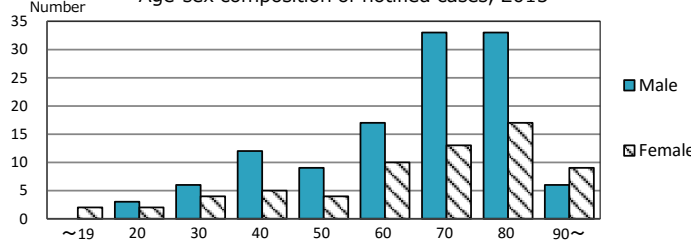
<b>TB statistics in 2015</b> Among newly notified : Foreign borns TB cases with homeless history Male aged 35-59, without job and receiving public assistance	( Population in Sakai 839,891 ) (Japan) 4 2.2% (6.4%) 1 0.5% (0.9%) 2 7.4% (9.0%)
---	--

Trends	'11	'12	'13	'14	'15
Notified cases	205	235	222	181	185
Rate per 100,000 population	24.3	27.9	26.4	21.5	22.0
Sputum smear +ve. PTB	89	105	93	82	96
Rate per 100,000 population	10.6	12.5	11.1	9.8	11.4
Latent Tuberculosis Infection	69	74	74	53	43
Rate per 100,000 population	8.2	8.8	8.8	6.3	5.1

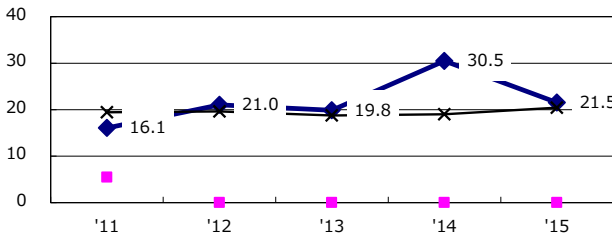
Trends of TB notification rates, all forms and smear +ve. PTB



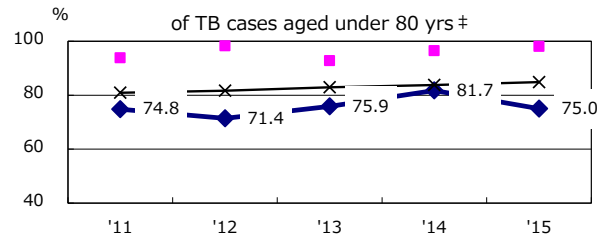
Age-sex composition of notified cases, 2015



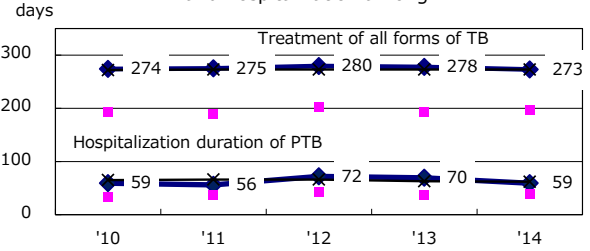
Proportion of cases with total diagnosis delay (> 3 mths) among symptomatic PTB\*



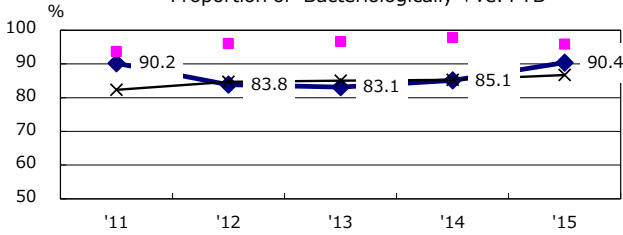
Proportion of TX with HRZ-E/S among all forms of TB cases aged under 80 yrs †



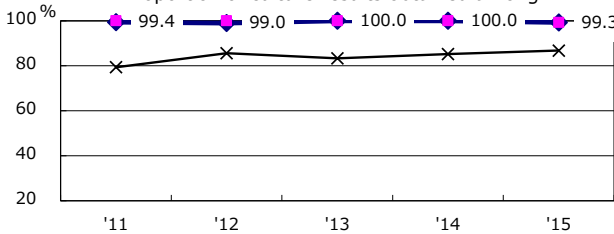
Median duration of treatment of all forms and hospitalization among PTB



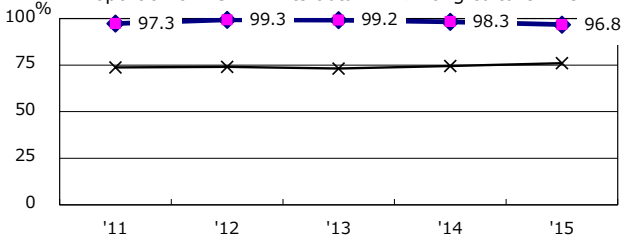
Proportion of Bacteriologically +ve. PTB



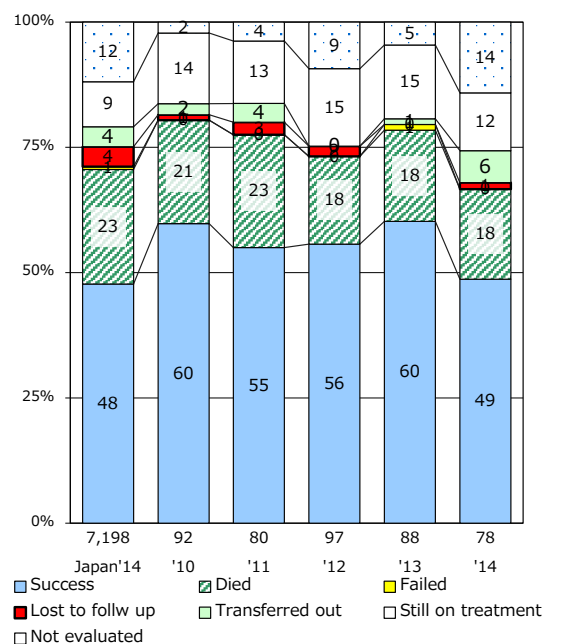
Proportion of culture results obtained among PTB



Proportion of DST results obtained among culture +ve. PTB



Treatment outcomes of new sputum smear +ve. TB



PTB : pulmonary TB

† Excluding unknown delay(%)	'11	'12	'13	'14	'15
	0.0	1.3	4.4	0.0	0.0

‡ Excluding unknown Tx(%)	'11	'12	'13	'14	'15
	0.0	0.0	0.0	0.0	0.0