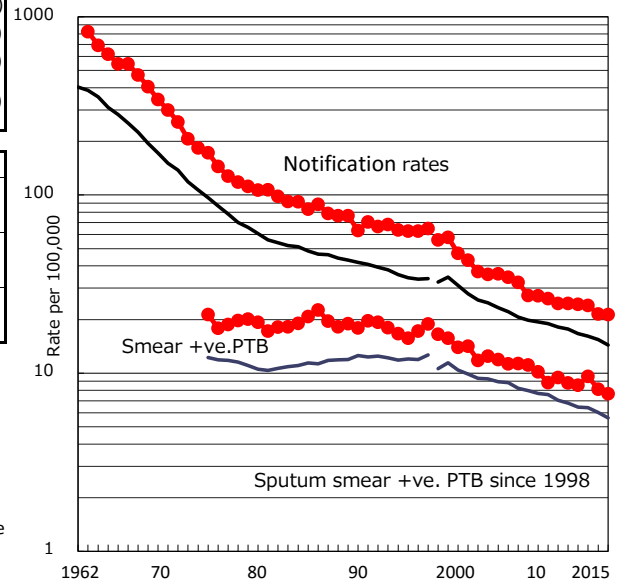


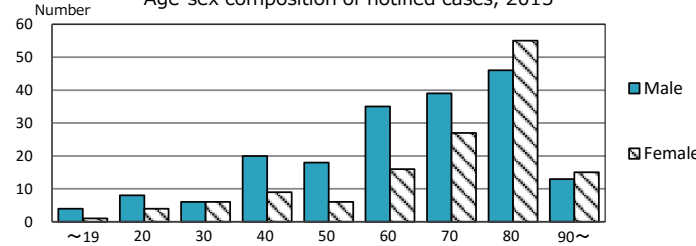
TB statistics in 2015 (Population in Kobe 1,537,860) Among newly notified : (Japan) Foreign borns 17 5.2% (6.4%) TB cases with homeless history 2 0.6% (0.9%) Male aged 35-59, without job and receiving public assistance 3 6.8% (9.0%)

Trends	'11	'12	'13	'14	'15
Notified cases	380	376	369	330	328
Rate per 100,000 population	24.6	24.4	24.0	21.5	21.3
Sputum smear +ve. PTB	136	132	148	125	118
Rate per 100,000 population	8.8	8.6	9.6	8.1	7.7
Latent Tuberculosis Infection	79	89	104	101	78
Rate per 100,000 population	5.1	5.8	6.8	6.6	5.1

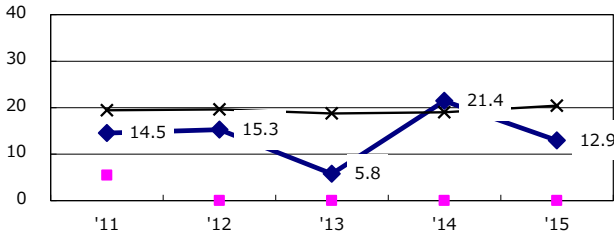
Trends of TB notification rates, all forms and smear +ve.PTB



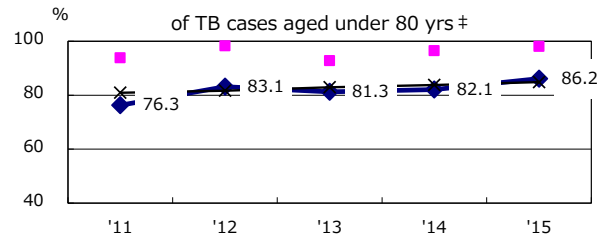
Age-sex composition of notified cases, 2015



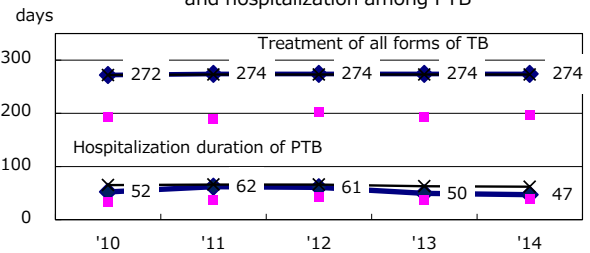
Proportion of cases with total diagnosis delay (> 3 mths) among symptomatic PTB*



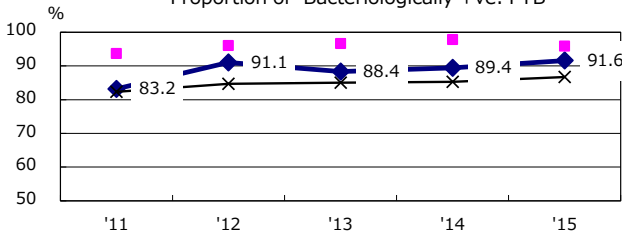
Proportion of TX with HRZ-E/S among all forms of TB cases aged under 80 yrs †



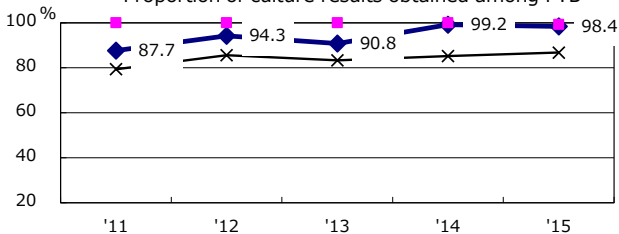
Median duration of treatment of all forms and hospitalization among PTB



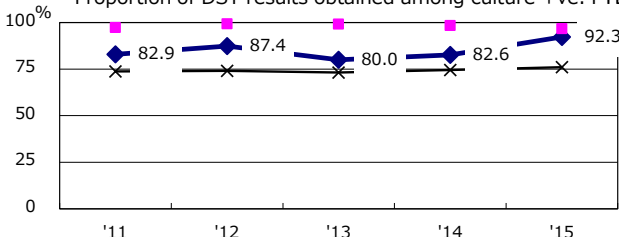
Proportion of Bacteriologically +ve. PTB



Proportion of culture results obtained among PTB



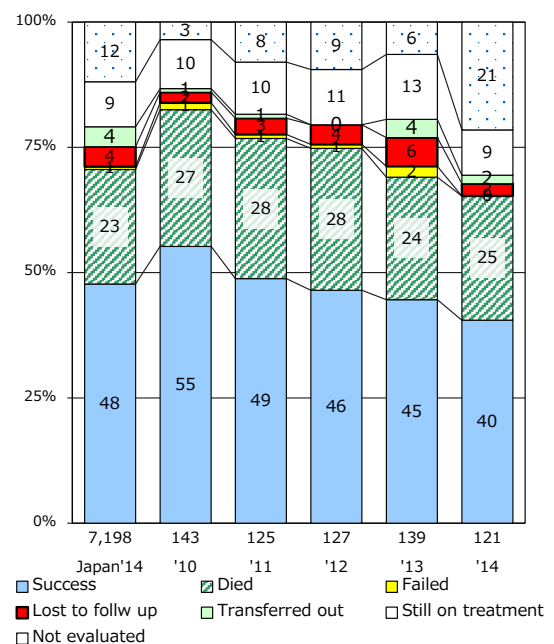
Proportion of DST results obtained among culture +ve. PTB



◆ Kobe ■ Best prefec./city × Japan

PTB : pulmonary TB

Treatment outcomes of new sputum smear +ve.TB



† Excluding unknown Tx(%) '11 '12 '13 '14 '15
 ‡ Excluding unknown Tx(%) 0.4 0.8 0.4 1.4 2.0

† Excluding unknown delay(%) '11 '12 '13 '14 '15
 38.5 65.0 77.6 85.9 56.9