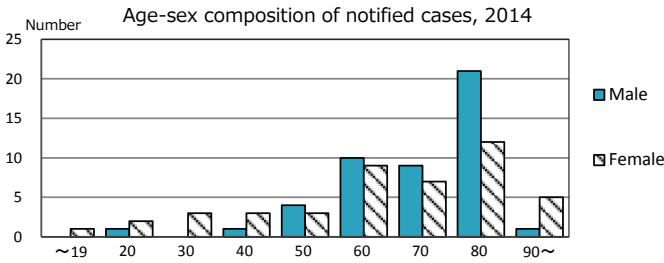
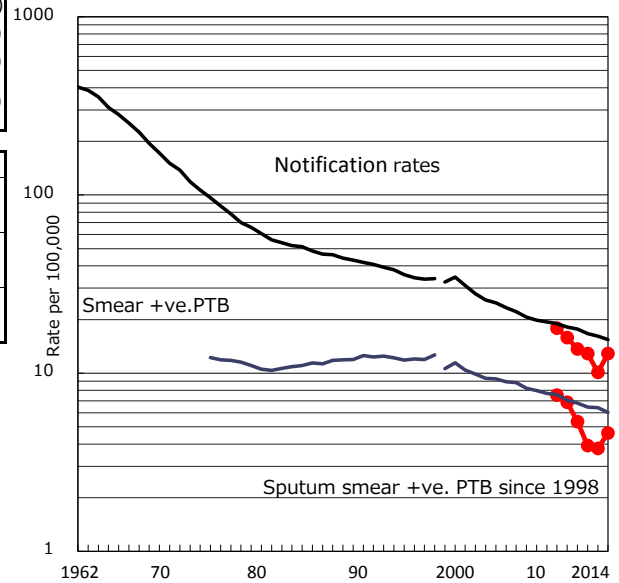


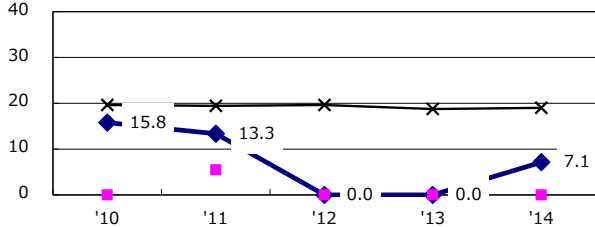
TB statistics in 2014 (Population in Okayama 714,583)	
Among newly registered : (Japan)	
Foreign borns	5 5.4% (5.6%)
TB cases with homeless history	0 0.0% (1.1%)
Male aged 35-59, without job and receiving public assistance	0 0.0% (8.0%)

Trends	'10	'11	'12	'13	'14
Notified cases	111	97	92	72	92
Rate per 100,000 population	15.9	13.6	12.9	10.1	12.9
Sputum smear +ve. pul.cases	48	38	28	27	33
Rate per 100,000 population	6.9	5.3	3.9	3.8	4.6
Latent Tuberculosis Infection	35	142	76	52	61
Rate per 100,000 population	5.0	20.0	10.7	7.3	8.5

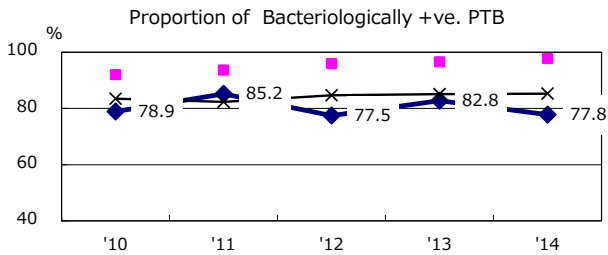
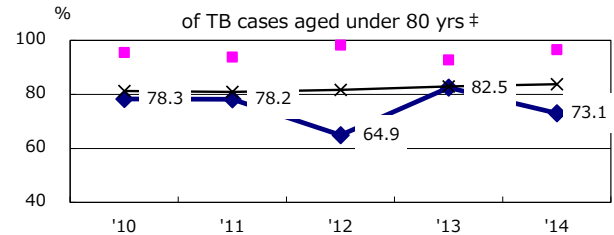
Trends of TB notification rates, all forms and smear +ve.PTB



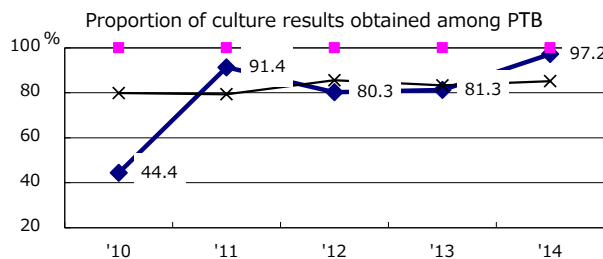
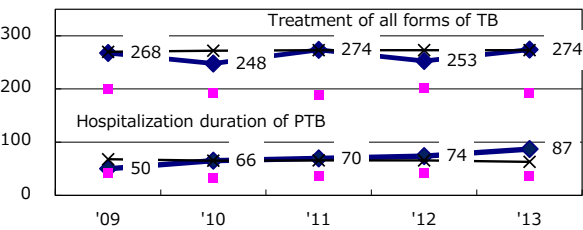
Proportion of cases with total diagnosis delay(> 3 mths) among symptomatic PTB*



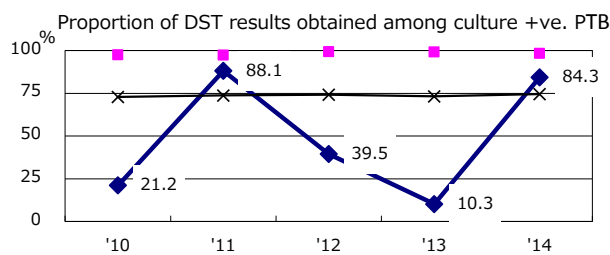
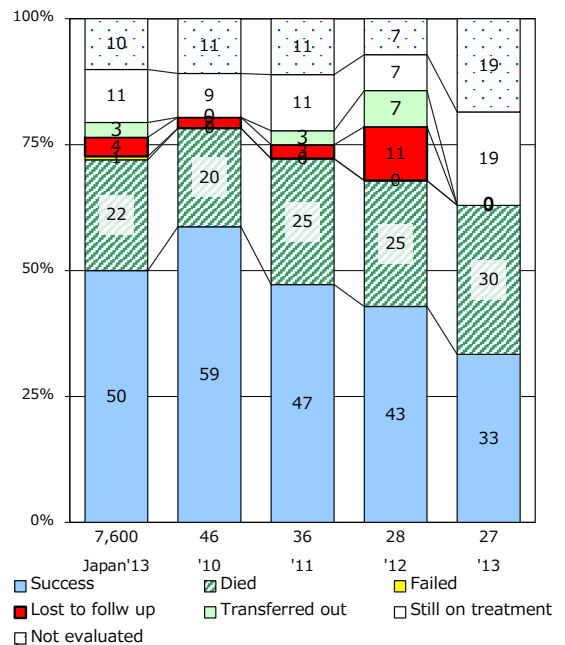
Proportion of TX with HRZ-E/S among all forms of TB cases aged under 80 yrs †



Median duration of treatment of all forms and hospitalization among PTB



Treatment outcomes of new sputum smear +ve.TB



PTB : pumonary TB

† Excluding unknown delay(%)	'10	'11	'12	'13	'14
	5.0	75.0	73.3	94.3	66.7

‡ Excluding unknown Tx(%)	'10	'11	'12	'13	'14
	5.5	6.8	0.0	0.0	1.9