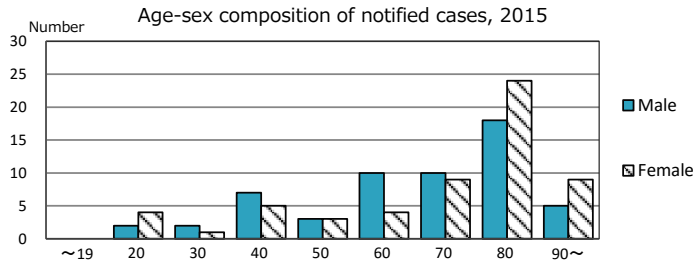
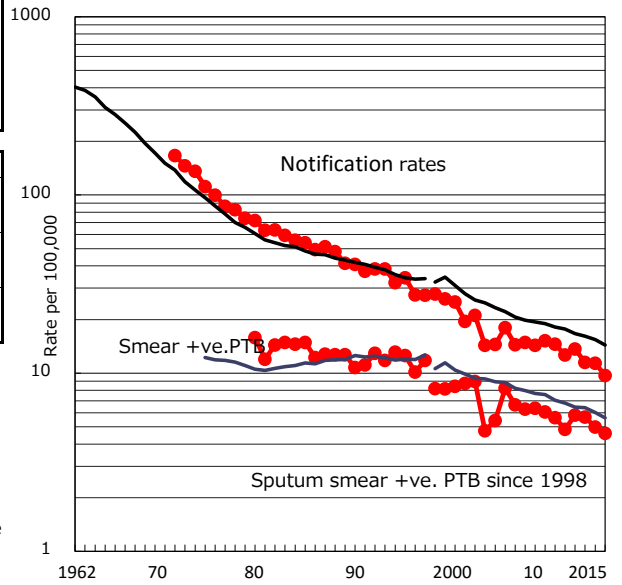


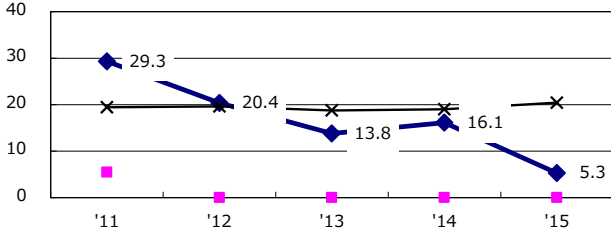
TB statistics in 2015 (Population in Hiroshima 1,194,507)	
Among newly notified :	(Japan)
Foreign borns	7 6.0% (6.4%)
TB cases with homeless history	0 0.0% (0.9%)
Male aged 35-59, without job and receiving public assistance	4 33.3% (9.0%)

Trends	'11	'12	'13	'14	'15
Notified cases	149	162	136	135	116
Rate per 100,000 population	12.7	13.7	11.5	11.4	9.7
Sputum smear +ve. PTB	57	69	67	59	55
Rate per 100,000 population	4.8	5.8	5.7	5.0	4.6
Latent Tuberculosis Infection	92	100	51	55	28
Rate per 100,000 population	7.8	8.4	4.3	4.6	2.3

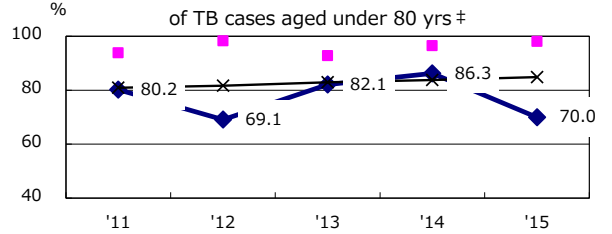
Trends of TB notification rates, all forms and smear +ve. PTB



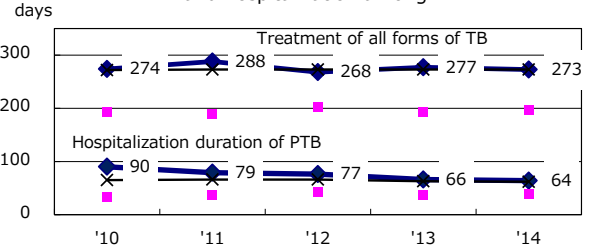
Proportion of cases with total diagnosis delay (> 3 mths) among symptomatic PTB\*



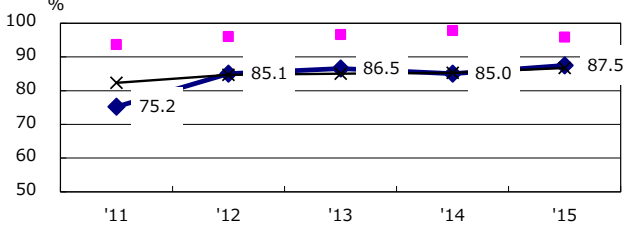
Proportion of TX with HRZ-E/S among all forms of TB cases aged under 80 yrs †



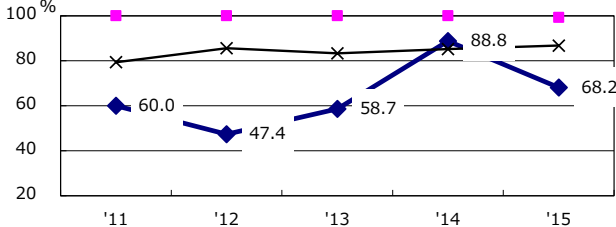
Median duration of treatment of all forms and hospitalization among PTB



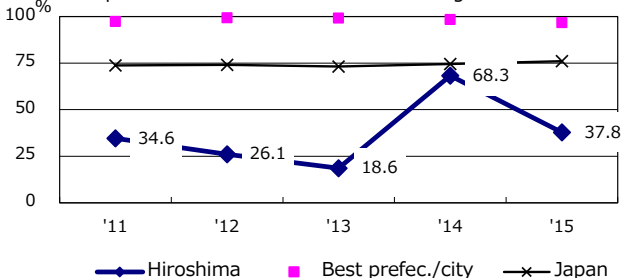
Proportion of Bacteriologically +ve. PTB



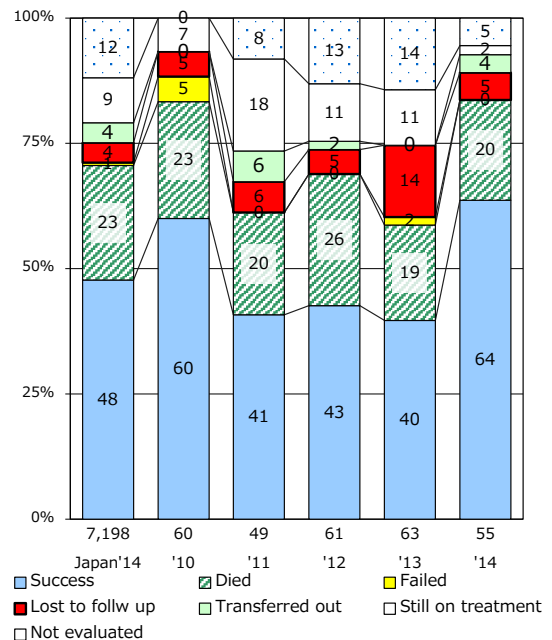
Proportion of culture results obtained among PTB



Proportion of DST results obtained among culture +ve. PTB



Treatment outcomes of new sputum smear +ve. TB



PTB : pulmonary TB

† Excluding unknown delay(%)	'11	'12	'13	'14	'15
	33.3	37.2	66.7	30.3	70.3

‡ Excluding unknown Tx(%)	'11	'12	'13	'14	'15
	1.0	1.8	1.2	2.4	0.0