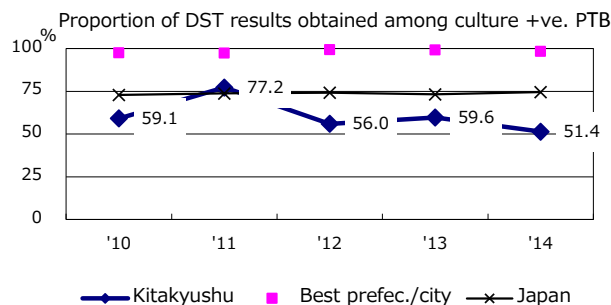
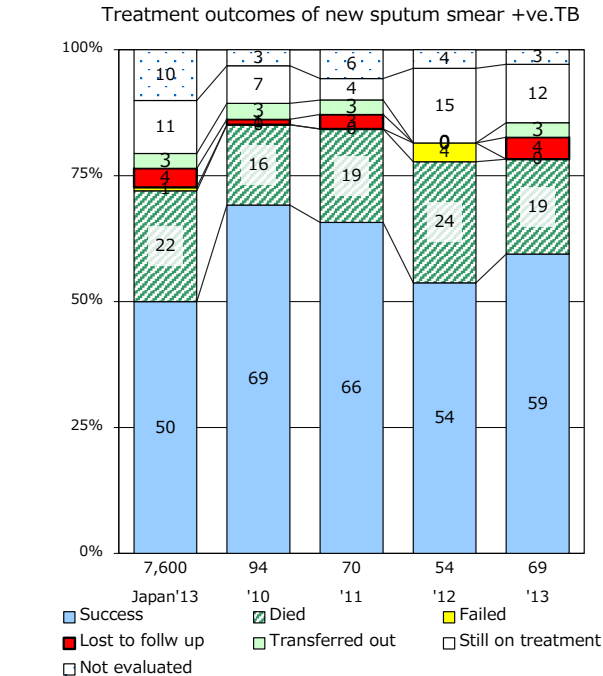
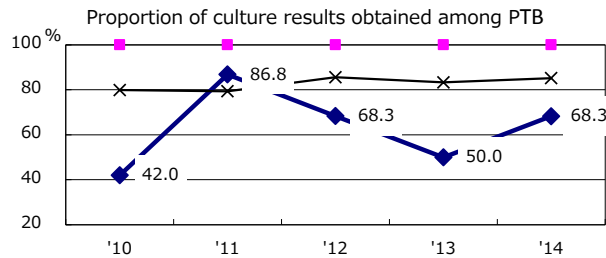
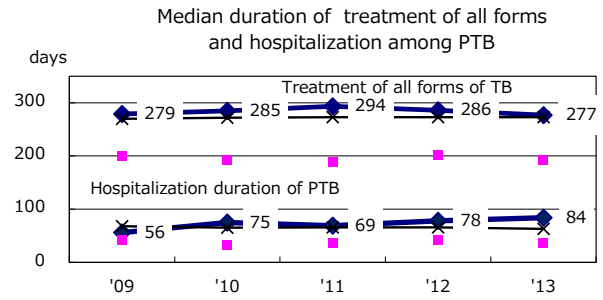
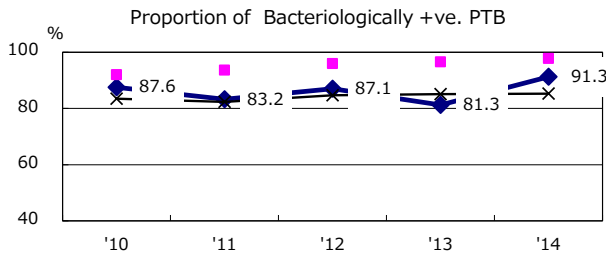
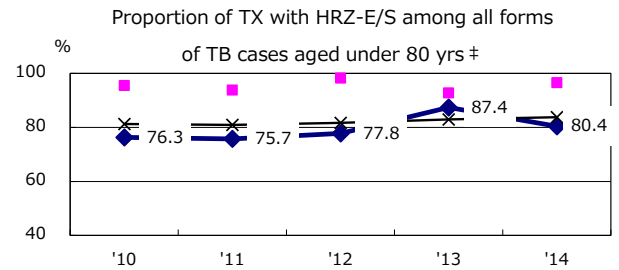
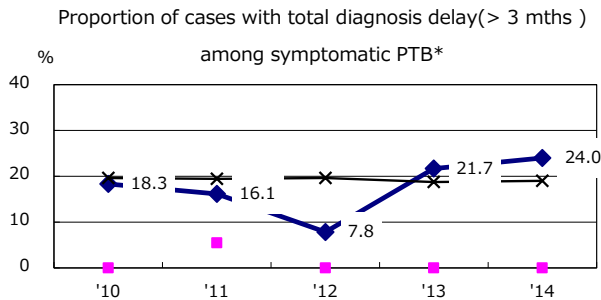
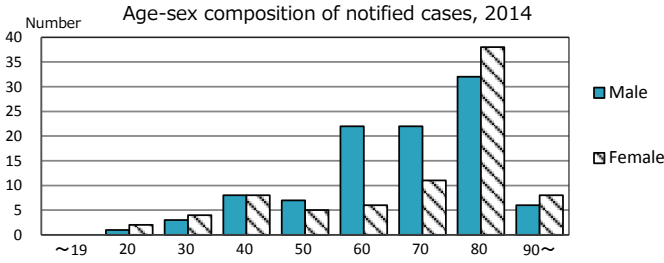
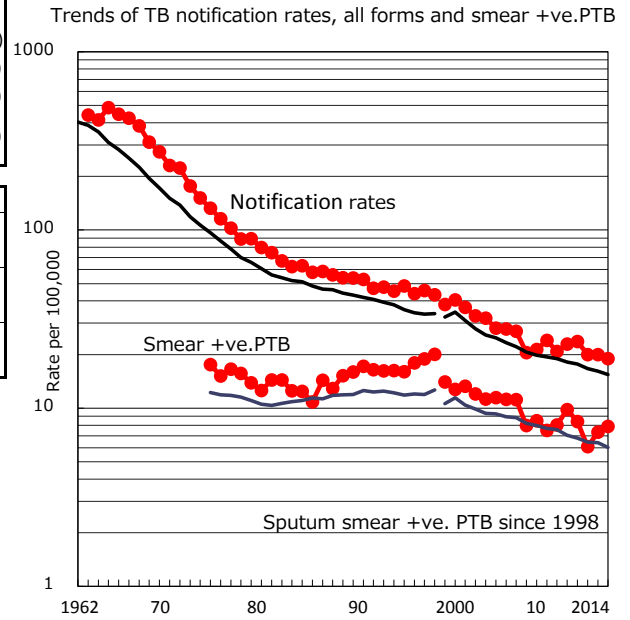


TB statistics in 2014 ( Population in Kitakyushu 963,259 )	
Among newly registered : (Japan)	
Foreign borns	3 1.6% (5.6%)
TB cases with homeless history	3 1.6% (1.1%)
Male aged 35-59, without job and receiving public assistance	1 5.6% (8.0%)

Trends	'10	'11	'12	'13	'14
Notified cases	224	230	194	193	183
Rate per 100,000 population	22.9	23.6	20.0	19.9	19.0
Sputum smear +ve. pul.cases	96	82	59	71	76
Rate per 100,000 population	9.8	8.4	6.1	7.3	7.9
Latent Tuberculosis Infection	10	40	71	70	46
Rate per 100,000 population	1.0	4.1	7.3	7.2	4.8



PTB : pumonyary TB

† Excluding unknown delay(%)	'10	'11	'12	'13	'14
	45.0	4.6	53.2	45.0	49.0

‡ Excluding unknown Tx(%)	'10	'11	'12	'13	'14
	0.0	1.4	1.8	5.1	2.0