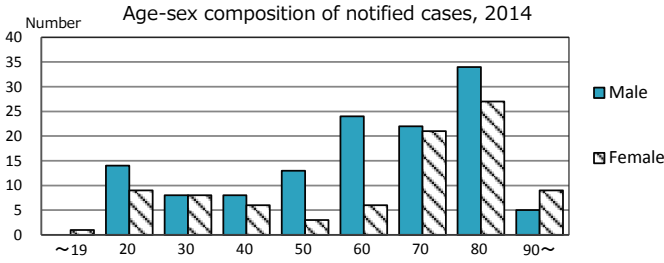
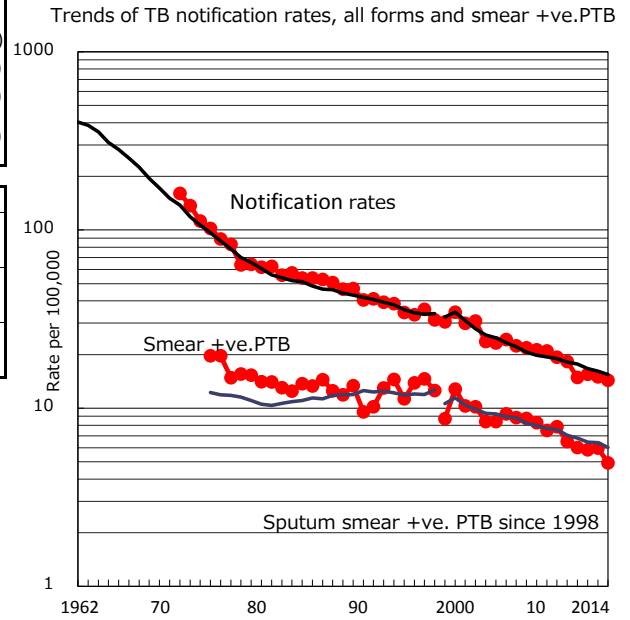
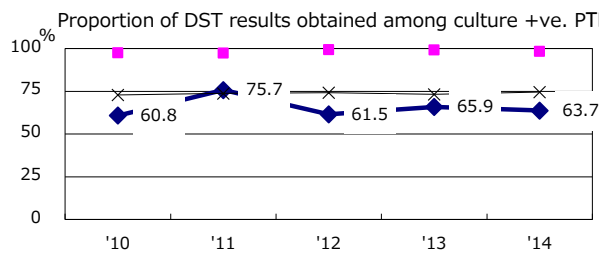
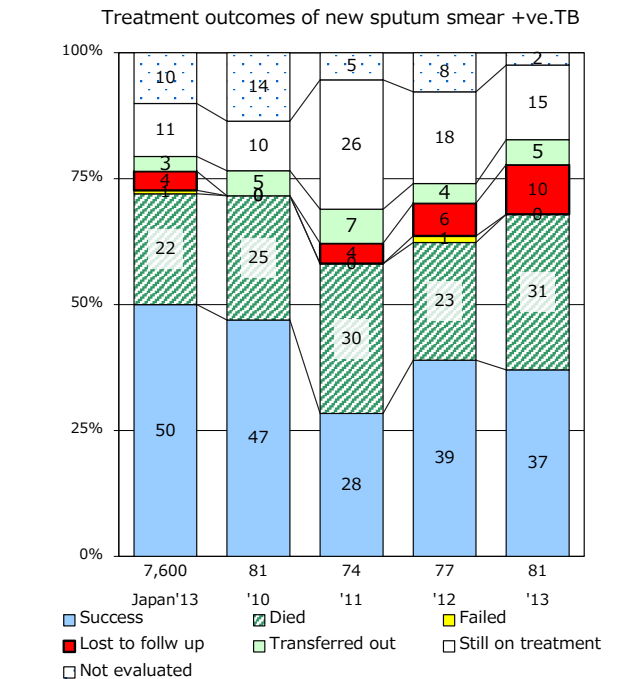
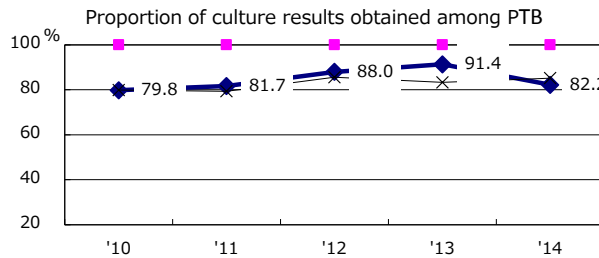
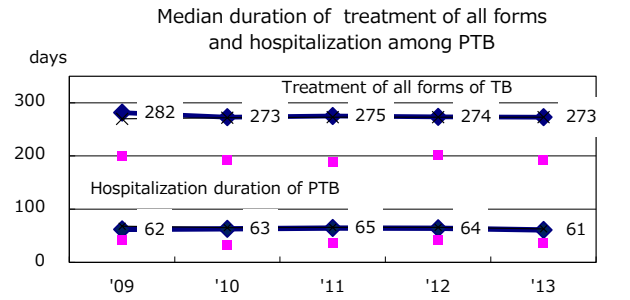
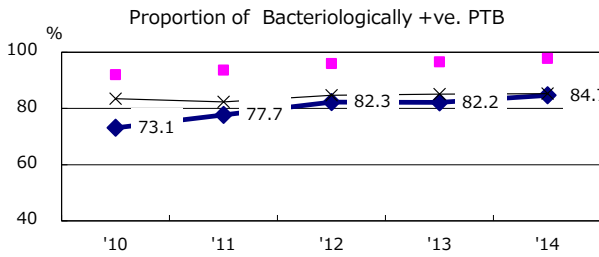
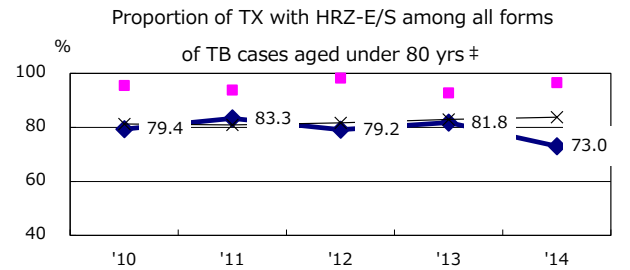
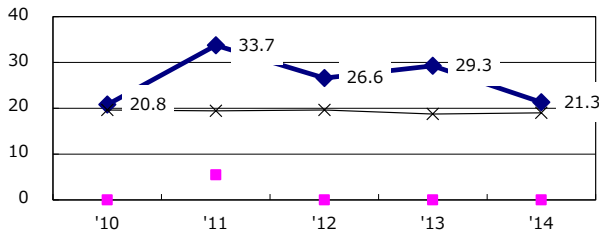


TB statistics in 2014 ( Population in Fukuoka 1,519,349 )	
Among newly registered : (Japan)	
Foreign borns	25 11.5% (5.6%)
TB cases with homeless history	5 2.3% (1.1%)
Male aged 35-59, without job and receiving public assistance	4 13.8% (8.0%)

Trends	'10	'11	'12	'13	'14
Notified cases	268	220	231	226	218
Rate per 100,000 population	18.3	14.9	15.5	15.0	14.3
Sputum smear +ve. pul.cases	95	89	87	90	75
Rate per 100,000 population	6.5	6.0	5.8	6.0	4.9
Latent Tuberculosis Infection	41	123	100	95	118
Rate per 100,000 population	2.8	8.3	6.7	6.3	7.8



Proportion of cases with total diagnosis delay (> 3 mths) among symptomatic PTB\*



PTB : pumonary TB

† Excluding unknown delay(%)	'10	'11	'12	'13	'14
	51.0	39.9	44.8	35.9	22.3

‡ Excluding unknown Tx(%)	'10	'11	'12	'13	'14
	1.0	1.3	1.3	0.0	1.4