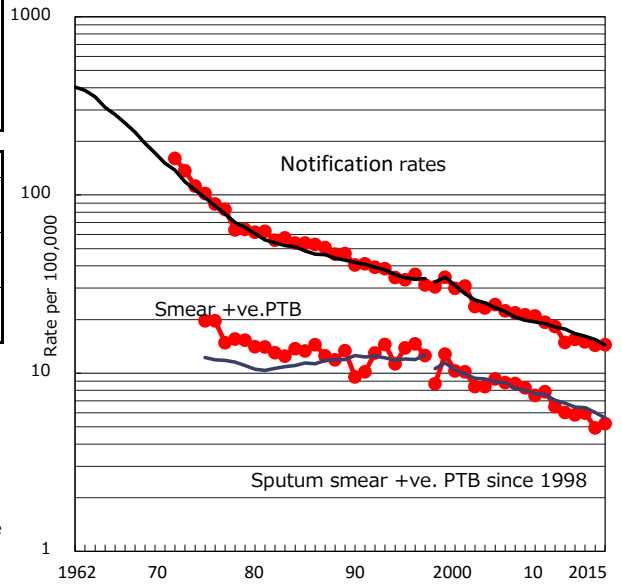


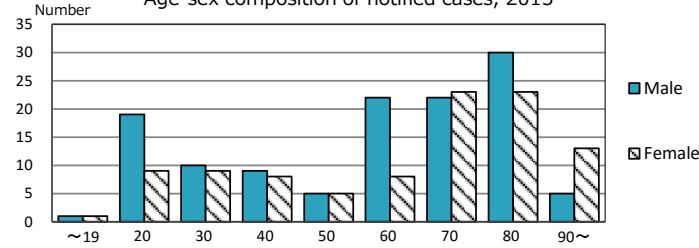
TB statistics in 2015 (Population in Fukuoka 1,538,510)	
Among newly notified : (Japan)	
Foreign borns	24 10.8% (6.4%)
TB cases with homeless history	1 0.5% (0.9%)
Male aged 35-59, without job and receiving public assistance	2 8.3% (9.0%)

Trends	'11	'12	'13	'14	'15
Notified cases	220	231	226	218	222
Rate per 100,000 population	14.9	15.5	15.0	14.3	14.4
Sputum smear +ve. PTB	89	87	90	75	80
Rate per 100,000 population	6.0	5.8	6.0	4.9	5.2
Latent Tuberculosis Infection	123	100	95	118	71
Rate per 100,000 population	8.3	6.7	6.3	7.8	4.6

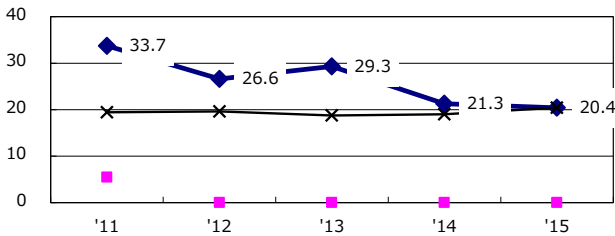
Trends of TB notification rates, all forms and smear +ve. PTB



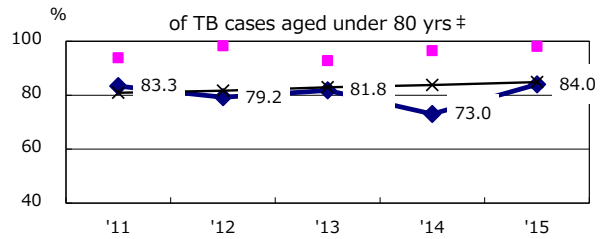
Age-sex composition of notified cases, 2015



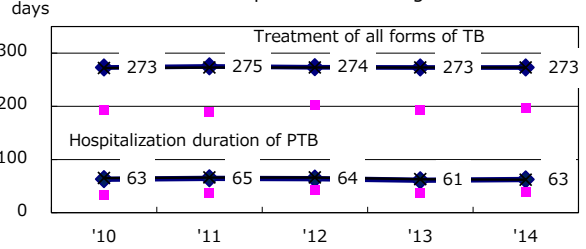
Proportion of cases with total diagnosis delay (> 3 mths) among symptomatic PTB*



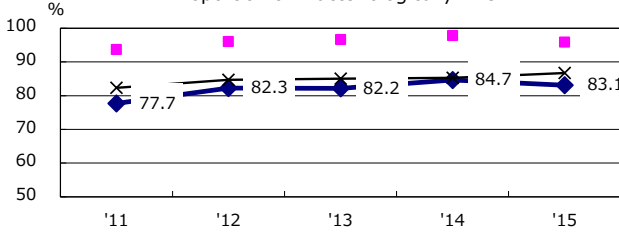
Proportion of TX with HRZ-E/S among all forms of TB cases aged under 80 yrs †



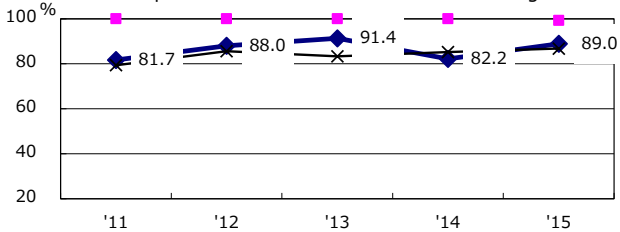
Median duration of treatment of all forms and hospitalization among PTB



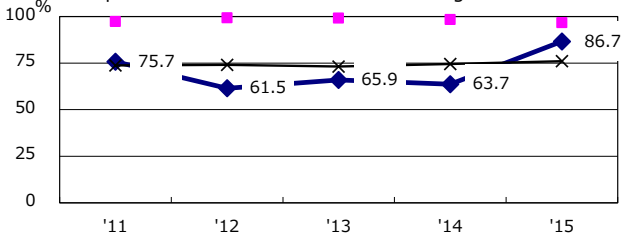
Proportion of Bacteriologically +ve. PTB



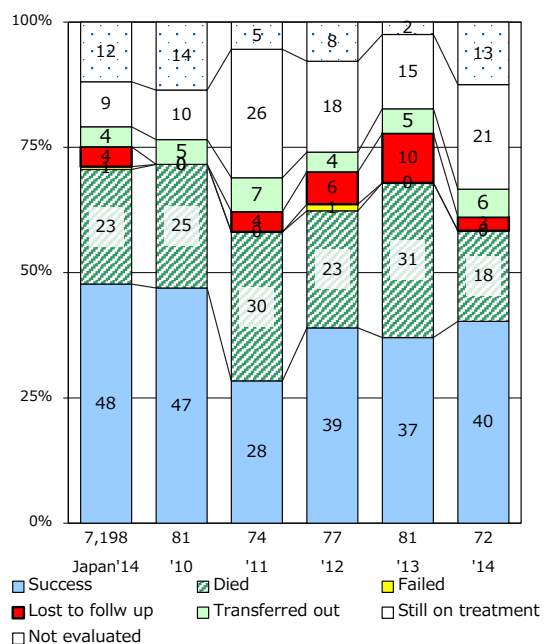
Proportion of culture results obtained among PTB



Proportion of DST results obtained among culture +ve. PTB



Treatment outcomes of new sputum smear +ve. TB



PTB : pulmonary TB

† Excluding unknown delay(%)	'11	'12	'13	'14	'15
	39.9	44.8	35.9	22.3	21.4

‡ Excluding unknown Tx(%)	'11	'12	'13	'14	'15
	1.3	1.3	0.0	1.4	0.7