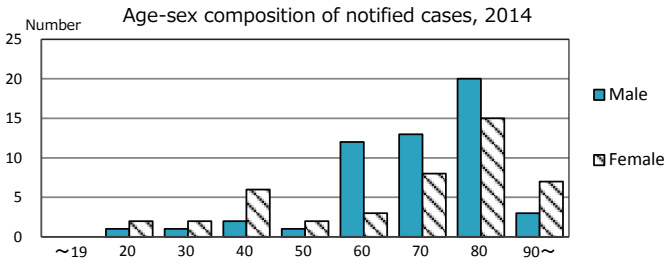
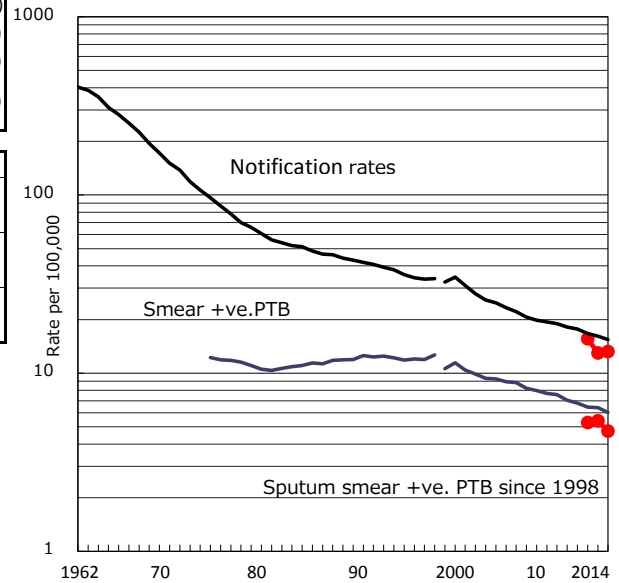


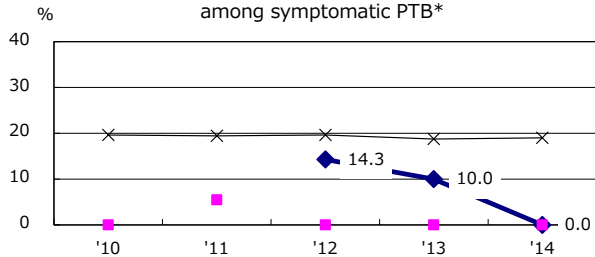
TB statistics in 2014 ( Population in Kumamoto 740,204 )	
Among newly registered : (Japan)	
Foreign borns	4 4.1% (5.6%)
TB cases with homeless history	0 0.0% (1.1%)
Male aged 35-59, without job and receiving public assistance	0 0.0% (8.0%)

Trends	'10	'11	'12	'13	'14
Notified cases			115	96	98
Rate per 100,000 population			15.6	13.0	13.2
Sputum smear +ve. pul.cases			39	40	35
Rate per 100,000 population			5.3	5.4	4.7
Latent Tuberculosis Infection			55	35	37
Rate per 100,000 population			7.5	4.7	5.0

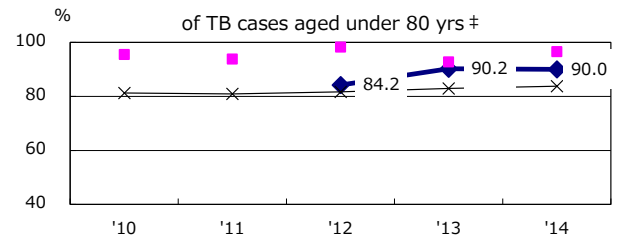
Trends of TB notification rates, all forms and smear +ve.PTB



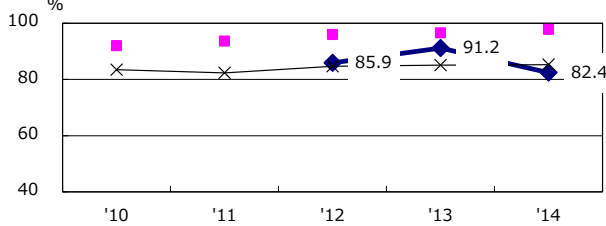
Proportion of cases with total diagnosis delay(> 3 mths) among symptomatic PTB\*



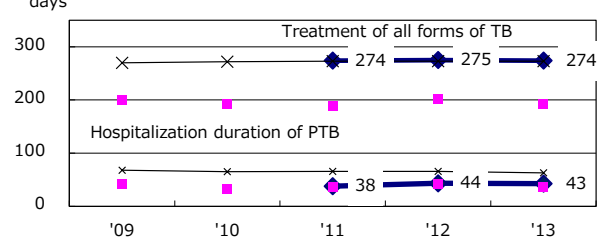
Proportion of TX with HRZ-E/S among all forms of TB cases aged under 80 yrs †



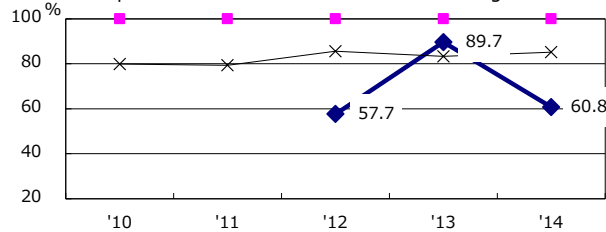
Proportion of Bacteriologically +ve. PTB



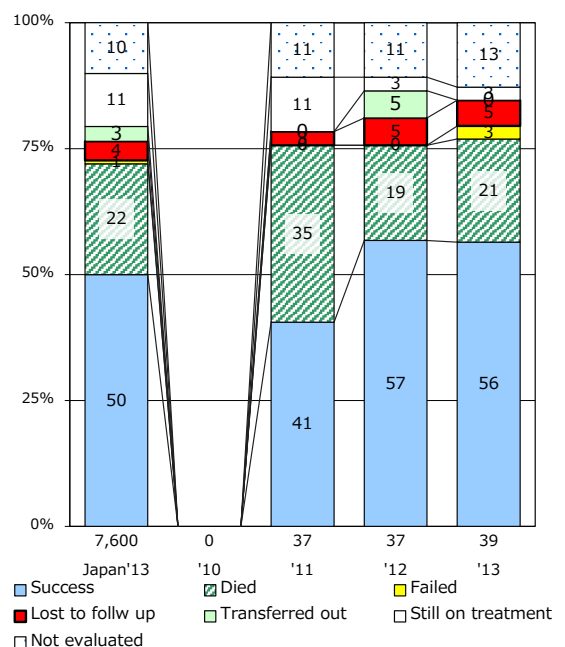
Median duration of treatment of all forms and hospitalization among PTB



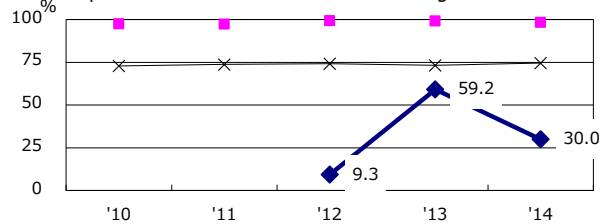
Proportion of culture results obtained among PTB



Treatment outcomes of new sputum smear +ve.TB



Proportion of DST results obtained among culture +ve. PTB



◆ Kumamoto    ■ Best prefec./city    × Japan

PTB : pumonary TB

† Excluding unknown delay(%)	'10	'11	'12	'13	'14
	0.0	0.0	79.1	83.1	92.3

‡ Excluding unknown Tx(%)	'10	'11	'12	'13	'14
	0.0	0.0	8.1	4.7	5.7