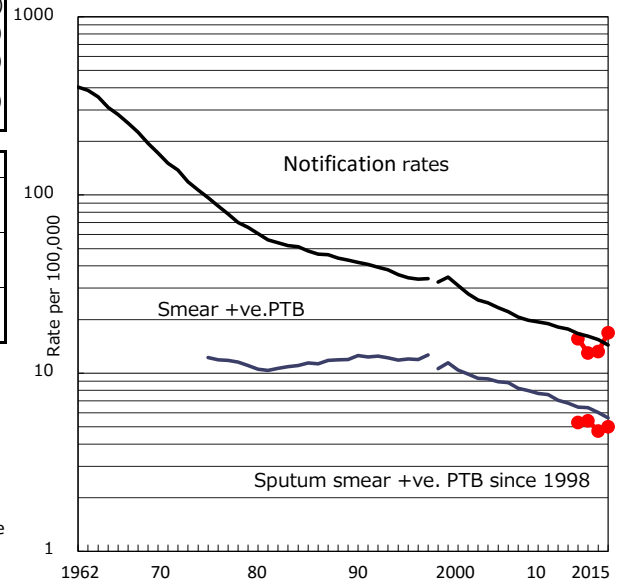


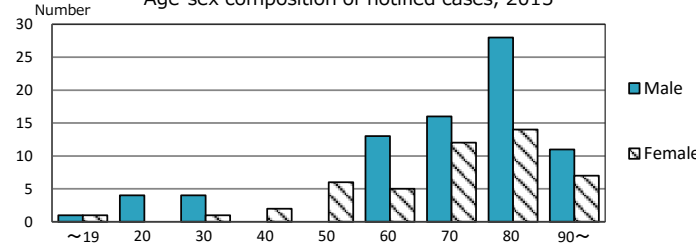
<b>TB statistics in 2015</b>	(Population in Kumamoto	740,223)
Among newly notified :		(Japan)
Foreign borns	3	2.4% (6.4%)
TB cases with homeless history	0	0.0% (0.9%)
Male aged 35-59, without job and receiving public assistance	0	0.0% (9.0%)

Trends	'11	'12	'13	'14	'15
Notified cases	-	115	96	98	125
Rate per 100,000 population	-	15.6	13.0	13.2	16.9
Sputum smear +ve. PTB	-	39	40	35	37
Rate per 100,000 population	-	5.3	5.4	4.7	5.0
Latent Tuberculosis Infection	-	55	35	37	40
Rate per 100,000 population	-	7.5	4.7	5.0	5.4

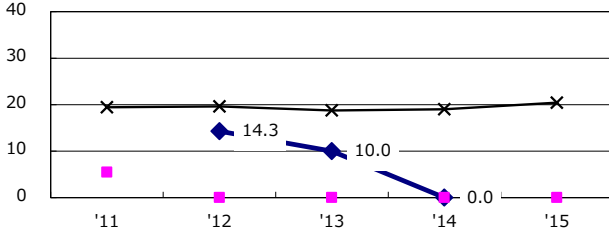
Trends of TB notification rates, all forms and smear +ve.PTB



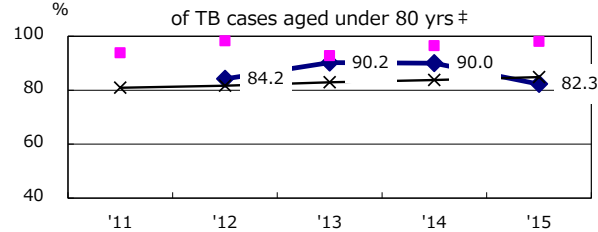
Age-sex composition of notified cases, 2015



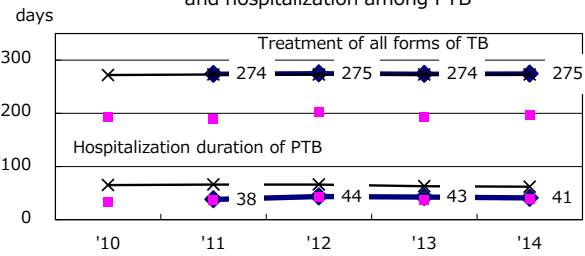
Proportion of cases with total diagnosis delay (> 3 mths) among symptomatic PTB\*



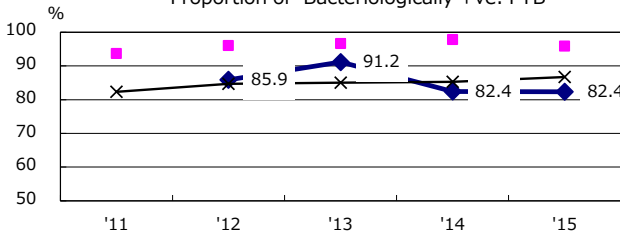
Proportion of TX with HRZ-E/S among all forms of TB cases aged under 80 yrs †



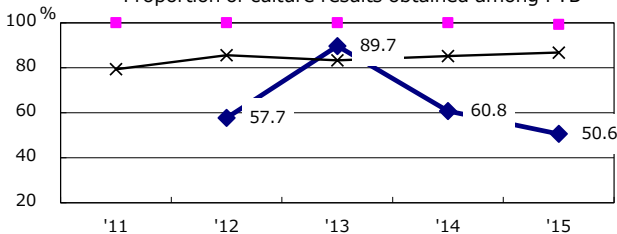
Median duration of treatment of all forms and hospitalization among PTB



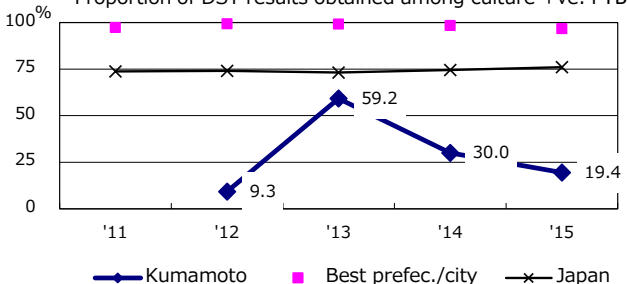
Proportion of Bacteriologically +ve. PTB



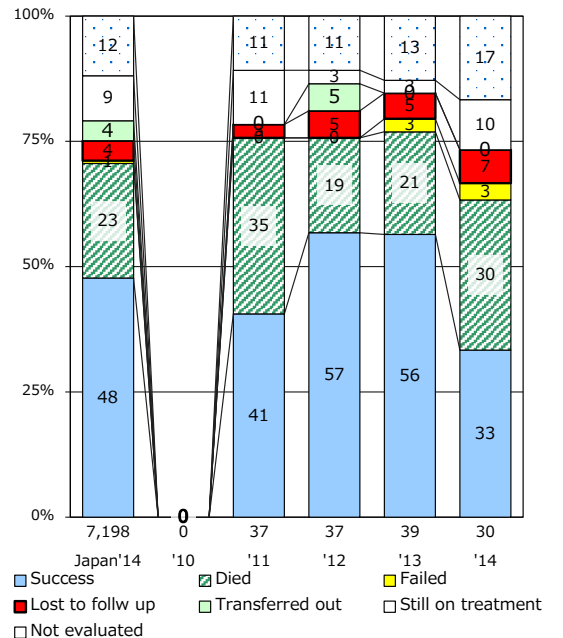
Proportion of culture results obtained among PTB



Proportion of DST results obtained among culture +ve. PTB



Treatment outcomes of new sputum smear +ve.TB



PTB : pulmonary TB

† Excluding unknown delay(%)	'11	'12	'13	'14	'15
	0.0	79.1	83.1	92.3	100.0

‡ Excluding unknown Tx(%)	'11	'12	'13	'14	'15
	0.0	8.1	4.7	5.7	4.6