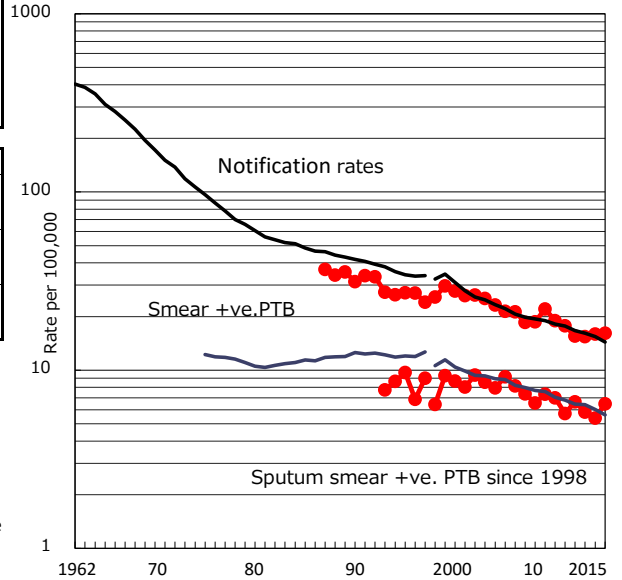


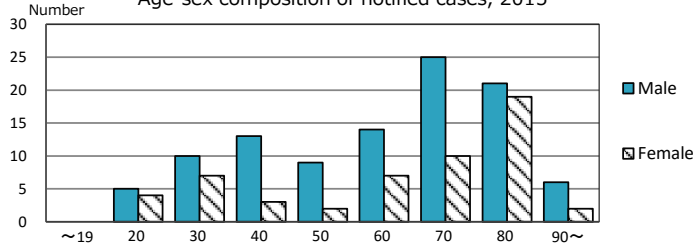
TB statistics in 2015	(Population in Chiba	972,639)
Among newly notified :		(Japan)
Foreign borns	3	1.9% (6.4%)
TB cases with homeless history	1	0.6% (0.9%)
Male aged 35-59, without job and receiving public assistance	11	34.4% (9.0%)

Trends	'11	'12	'13	'14	'15
Notified cases	171	150	149	154	157
Rate per 100,000 population	17.8	15.6	15.5	15.9	16.1
Sputum smear +ve. PTB	55	64	56	52	63
Rate per 100,000 population	5.7	6.6	5.8	5.4	6.5
Latent Tuberculosis Infection	93	85	77	58	33
Rate per 100,000 population	9.7	8.8	8.0	6.0	3.4

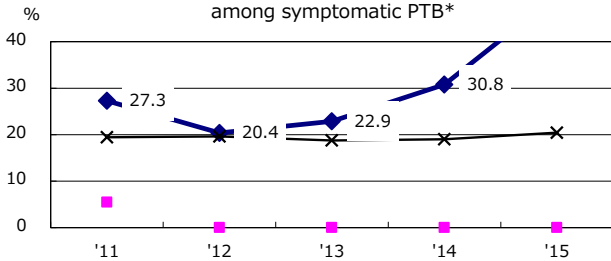
Trends of TB notification rates, all forms and smear +ve. PTB



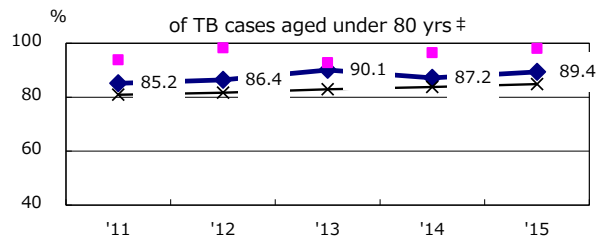
Age-sex composition of notified cases, 2015



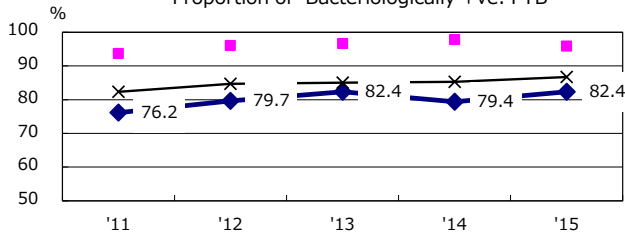
Proportion of cases with total diagnosis delay (> 3 mths) among symptomatic PTB*



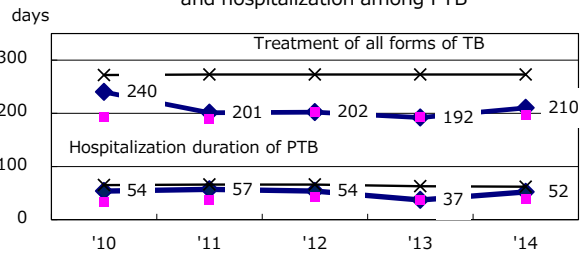
Proportion of TX with HRZ-E/S among all forms of TB cases aged under 80 yrs †



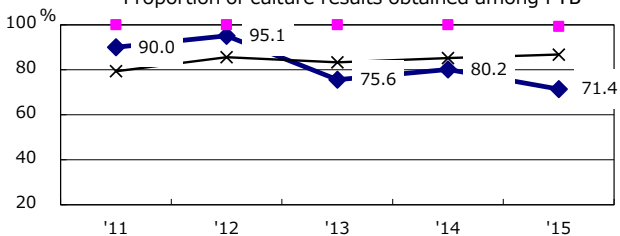
Proportion of Bacteriologically +ve. PTB



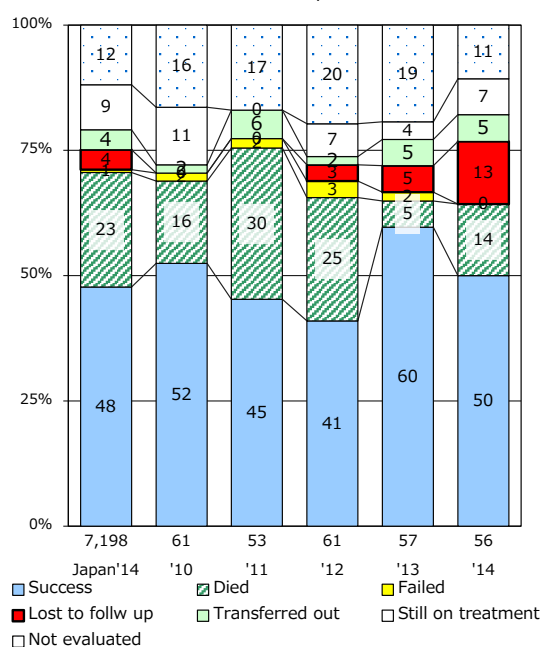
Median duration of treatment of all forms and hospitalization among PTB



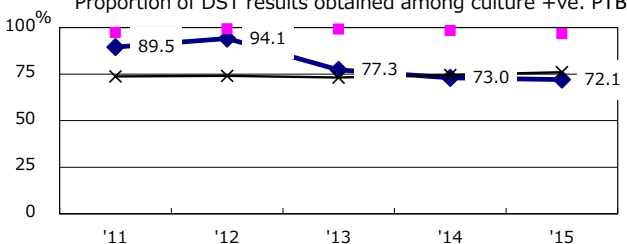
Proportion of culture results obtained among PTB



Treatment outcomes of new sputum smear +ve. TB



Proportion of DST results obtained among culture +ve. PTB



PTB : pulmonary TB

† Excluding unknown delay(%)	'11	'12	'13	'14	'15
	60.2	39.3	56.8	69.0	97.8

‡ Excluding unknown Tx(%)	'11	'12	'13	'14	'15
	5.2	4.6	7.5	4.4	4.6