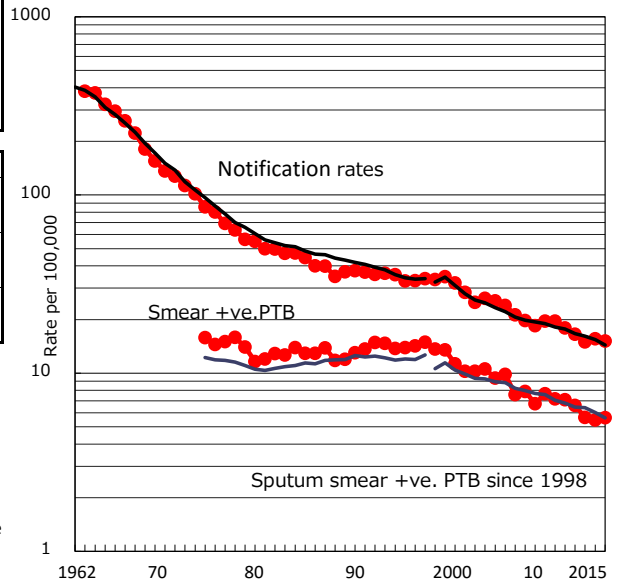


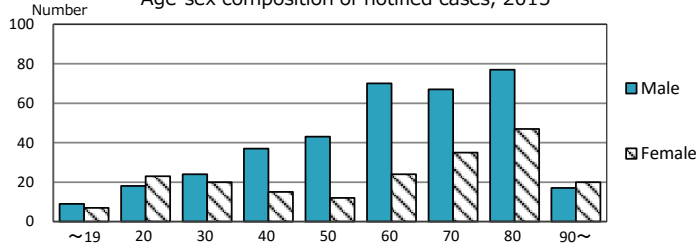
TB statistics in 2015 (Population in Yokohama 3,726,167)	
Among newly notified :	(Japan)
Foreign borns	32 5.7% (6.4%)
TB cases with homeless history	6 1.1% (0.9%)
Male aged 35-59, without job and receiving public assistance	11 10.6% (9.0%)

Trends	'11	'12	'13	'14	'15
Notified cases	663	611	554	578	565
Rate per 100,000 population	18.0	16.5	15.0	15.6	15.2
Sputum smear +ve. PTB	262	244	209	203	210
Rate per 100,000 population	7.1	6.6	5.6	5.5	5.6
Latent Tuberculosis Infection	229	243	162	197	179
Rate per 100,000 population	6.2	6.6	4.4	5.3	4.8

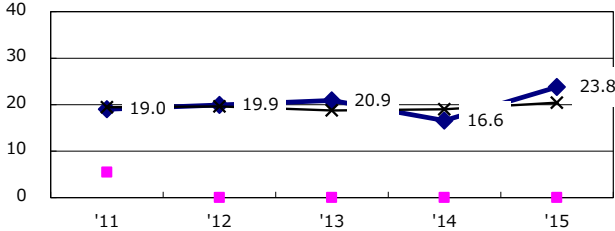
Trends of TB notification rates, all forms and smear +ve. PTB



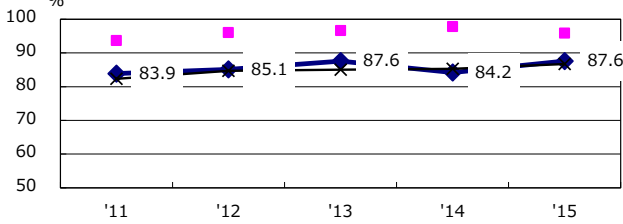
Age-sex composition of notified cases, 2015



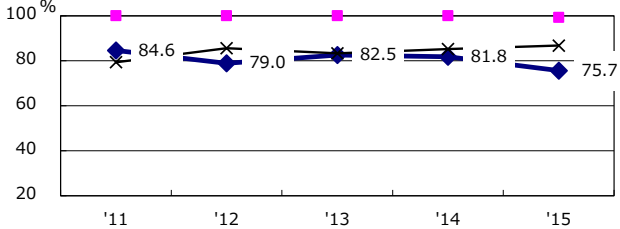
Proportion of cases with total diagnosis delay (> 3 mths) among symptomatic PTB*



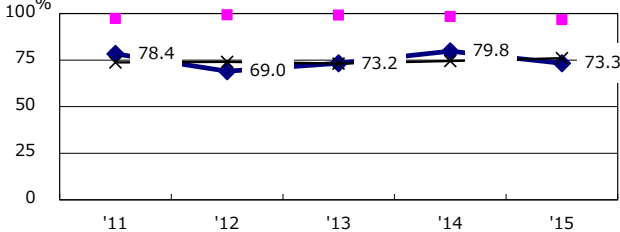
Proportion of Bacteriologically +ve. PTB



Proportion of culture results obtained among PTB



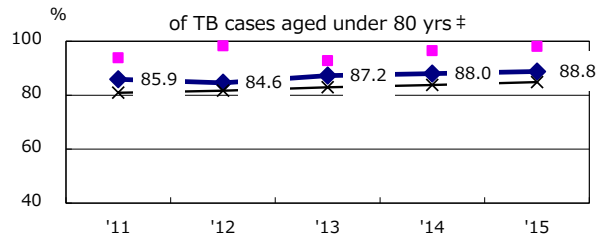
Proportion of DST results obtained among culture +ve. PTB



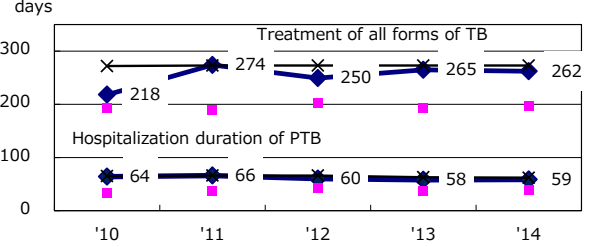
◆ Yokohama ■ Best prefec./city ✕ Japan

PTB : pulmonary TB

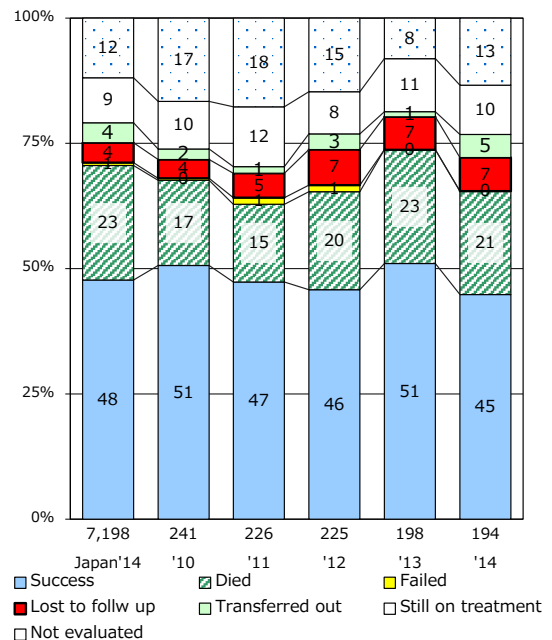
Proportion of TX with HRZ-E/S among all forms of TB cases aged under 80 yrs †



Median duration of treatment of all forms and hospitalization among PTB



Treatment outcomes of new sputum smear +ve. TB



† Excluding unknown delay(%)	'11	'12	'13	'14	'15
	46.6	41.8	44.0	39.1	52.3

‡ Excluding unknown Tx(%)	'11	'12	'13	'14	'15
	2.3	1.3	2.0	4.4	5.0