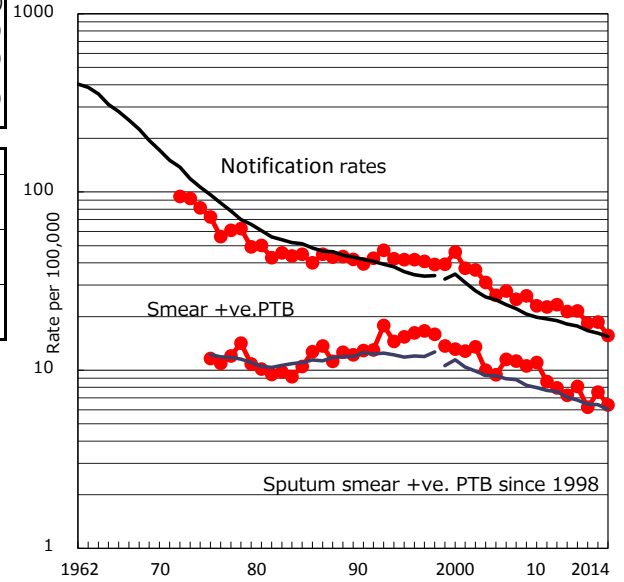


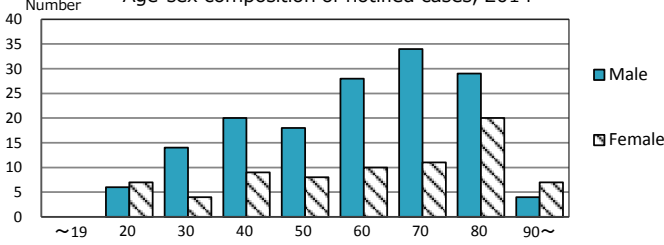
TB statistics in 2014 (Population in Kawasaki 1,460,675)	
Among newly registered : (Japan)	
Foreign borns	11 4.8% (5.6%)
TB cases with homeless history	10 4.4% (1.1%)
Male aged 35-59,without job and receiveing public assistance	3 5.8% (8.0%)

Trends	'10	'11	'12	'13	'14
Notified cases	304	308	264	270	229
Rate per 100,000 population	21.3	21.5	18.3	18.6	15.7
Sputum smear +ve. pul.cases	103	116	89	109	93
Rate per 100,000 population	7.2	8.1	6.2	7.5	6.4
Latent Tuberculosis Infection	63	105	104	85	73
Rate per 100,000 population	4.4	7.3	7.2	5.9	5.0

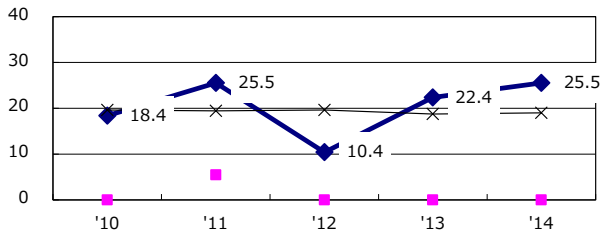
Trends of TB notification rates, all forms and smear +ve.PTB



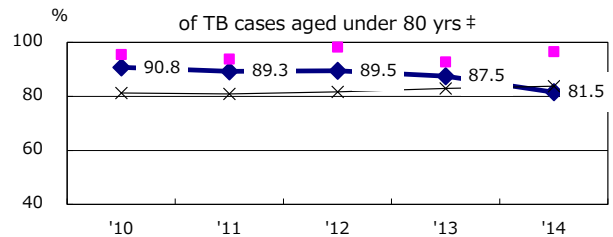
Age-sex composition of notified cases, 2014



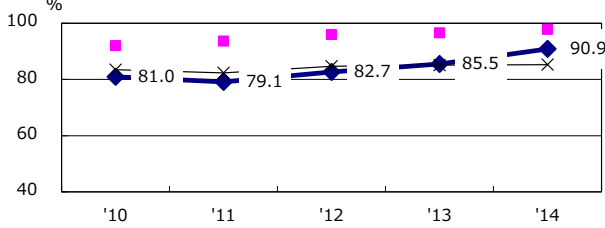
Proportion of cases with total diagnosis delay(> 3 mths) among symptomatic PTB*



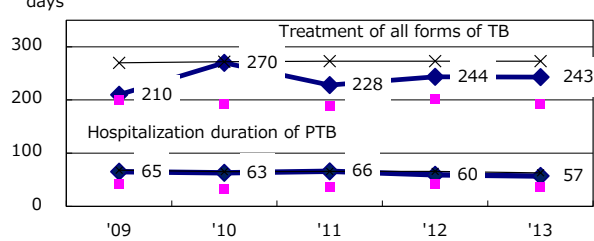
Proportion of TX with HRZ-E/S among all forms of TB cases aged under 80 yrs †



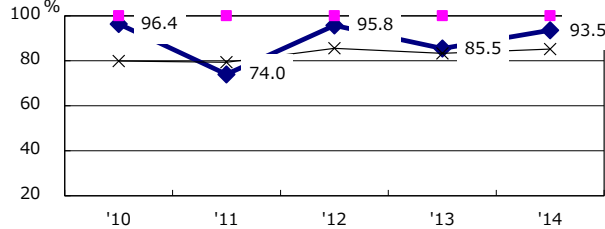
Proportion of Bacteriologically +ve. PTB



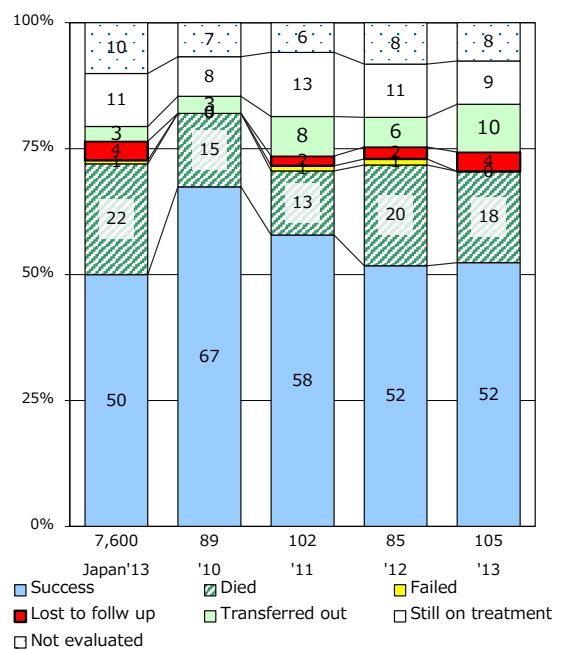
Median duration of treatment of all forms and hospitalization among PTB



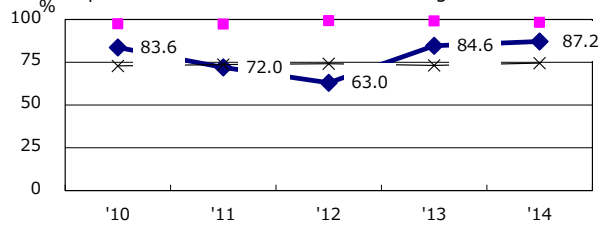
Proportion of culture results obtained among PTB



Treatment outcomes of new sputum smear +ve.TB



Proportion of DST results obtained among culture +ve. PTB



PTB : pumonary TB

† Excluding unknown delay(%)	'10	'11	'12	'13	'14
	25.3	45.6	7.4	56.8	65.4

‡ Excluding unknown Tx(%)	'10	'11	'12	'13	'14
	0.4	2.0	2.6	3.4	0.6