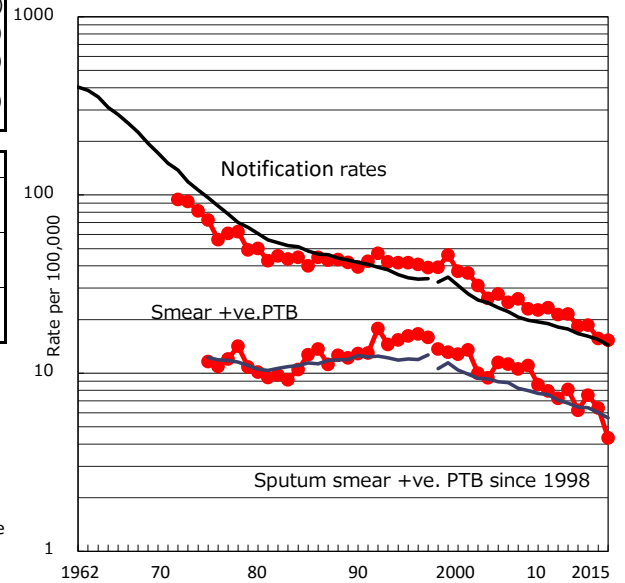


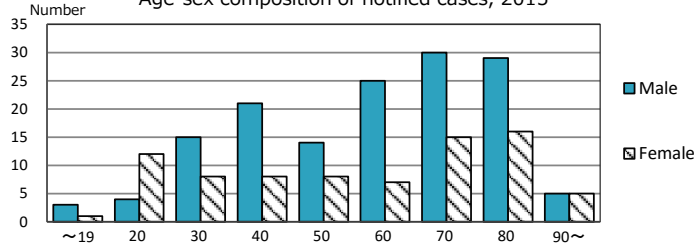
TB statistics in 2015 (Population in Kawasaki 1,474,481)	
Among newly notified : (Japan)	
Foreign borns	18 8.0% (6.4%)
TB cases with homeless history	6 2.7% (0.9%)
Male aged 35-59, without job and receiving public assistance	3 6.0% (9.0%)

Trends	'11	'12	'13	'14	'15
Notified cases	308	264	270	229	226
Rate per 100,000 population	21.5	18.3	18.6	15.7	15.3
Sputum smear +ve. PTB	116	89	109	93	64
Rate per 100,000 population	8.1	6.2	7.5	6.4	4.3
Latent Tuberculosis Infection	105	104	85	73	97
Rate per 100,000 population	7.3	7.2	5.9	5.0	6.6

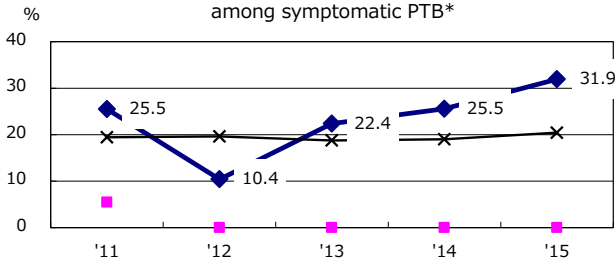
Trends of TB notification rates, all forms and smear +ve. PTB



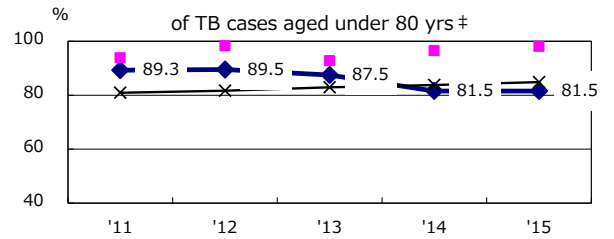
Age-sex composition of notified cases, 2015



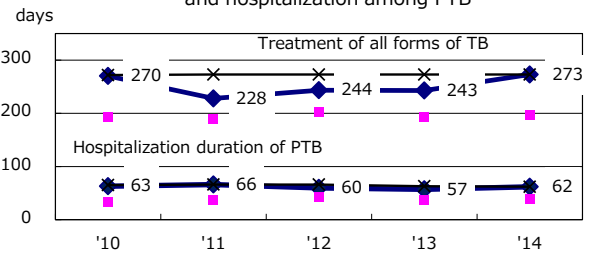
Proportion of cases with total diagnosis delay (> 3 mths) among symptomatic PTB*



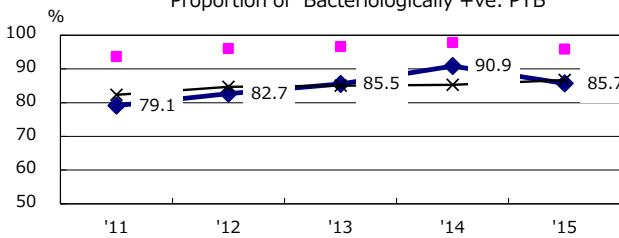
Proportion of TX with HRZ-E/S among all forms of TB cases aged under 80 yrs †



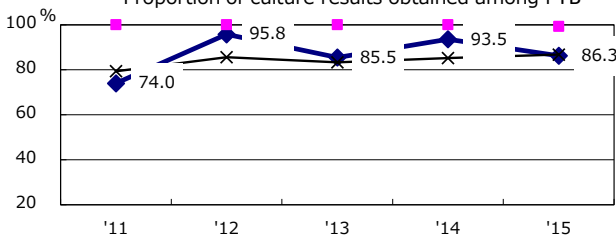
Median duration of treatment of all forms and hospitalization among PTB



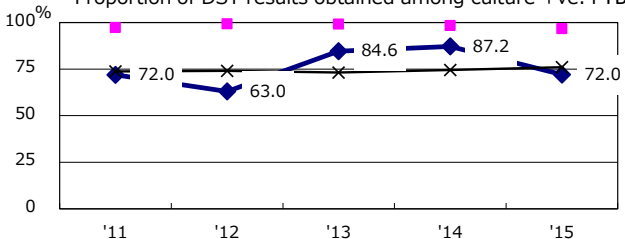
Proportion of Bacteriologically +ve. PTB



Proportion of culture results obtained among PTB



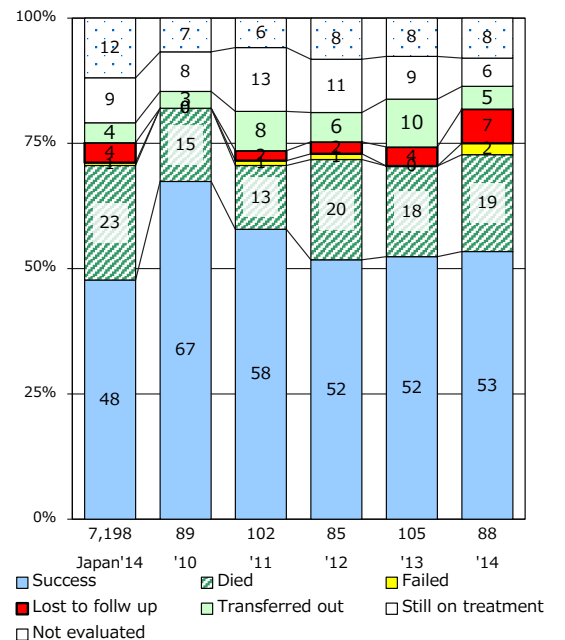
Proportion of DST results obtained among culture +ve. PTB



—◆— Kawasaki —■— Best prefec./city —×— Japan

PTB : pulmonary TB

Treatment outcomes of new sputum smear +ve. TB



† Excluding unknown delay(%)	'11	'12	'13	'14	'15
	45.6	7.4	56.8	65.4	63.3

‡ Excluding unknown Tx(%)	'11	'12	'13	'14	'15
	2.0	2.6	3.4	0.6	1.8