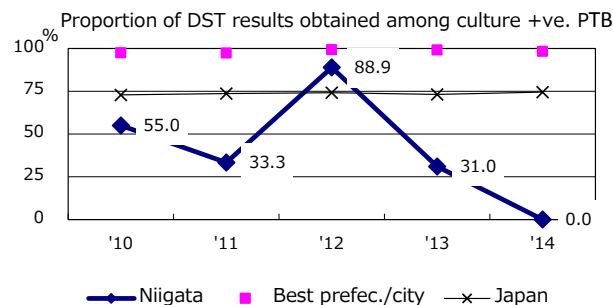
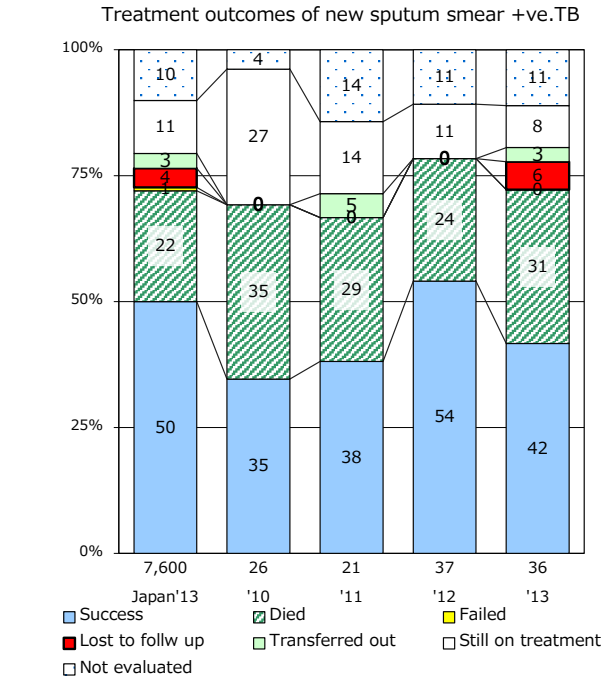
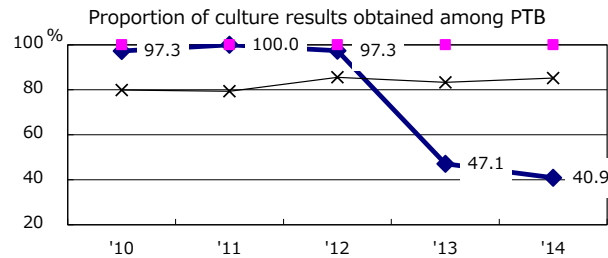
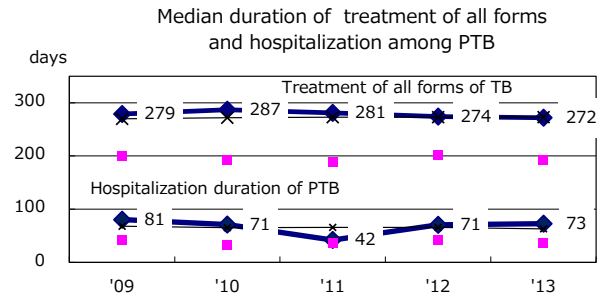
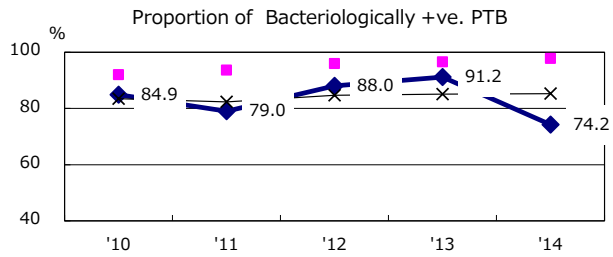
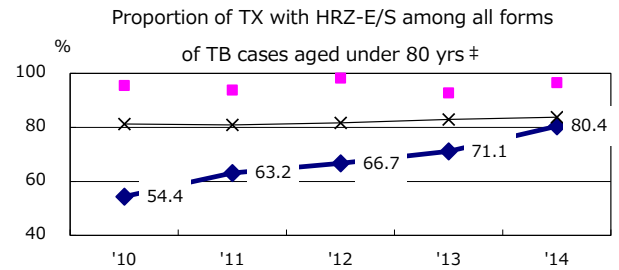
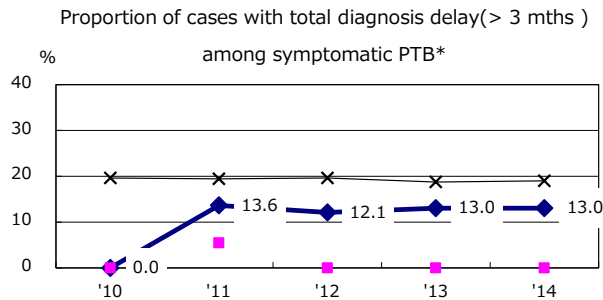
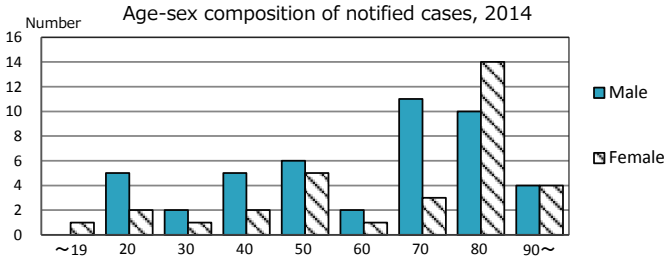
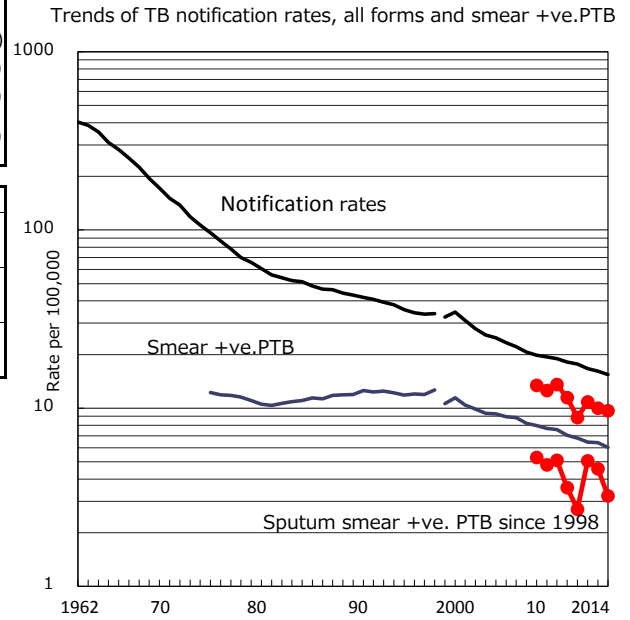


TB statistics in 2014 (Population in Niigata 808,143)	
Among newly registered : (Japan)	
Foreign borns	4 5.1% (5.6%)
TB cases with homeless history	0 0.0% (1.1%)
Male aged 35-59, without job and receiving public assistance	2 15.4% (8.0%)

Trends	'10	'11	'12	'13	'14
Notified cases	93	72	88	81	78
Rate per 100,000 population	11.5	8.9	10.8	10.0	9.7
Sputum smear +ve. pul.cases	29	22	41	37	26
Rate per 100,000 population	3.6	2.7	5.1	4.6	3.2
Latent Tuberculosis Infection	13	34	30	27	42
Rate per 100,000 population	1.6	4.2	3.7	3.3	5.2



PTB : pumonary TB

† Excluding unknown delay(%) '10 41.5 '11 56.0 '12 42.1 '13 59.6 '14 52.1

‡ Excluding unknown Tx(%) '10 0.0 '11 0.0 '12 0.0 '13 4.3 '14 0.0