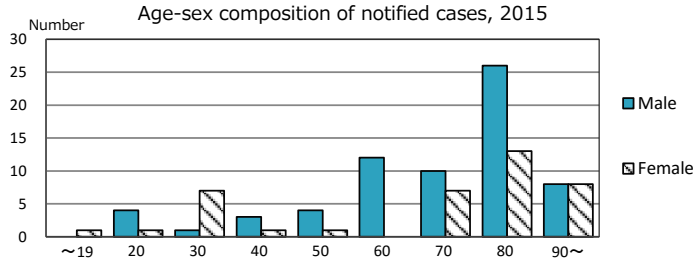
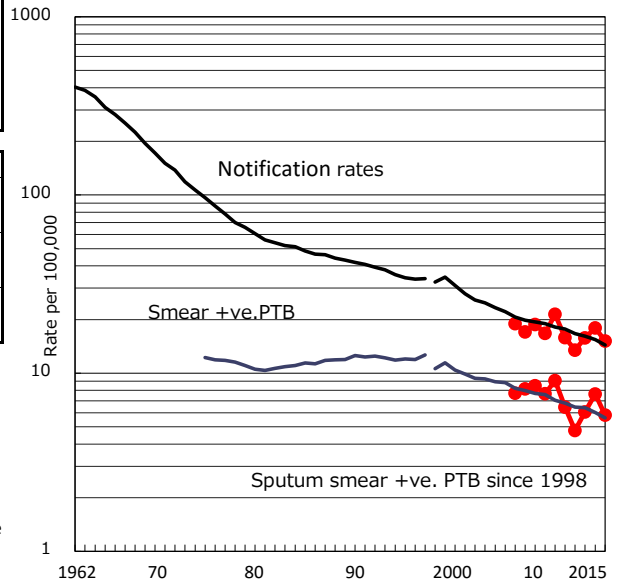


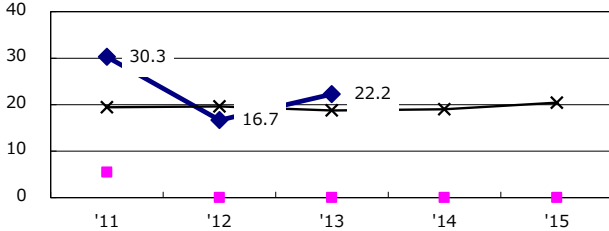
TB statistics in 2015 (Population in Shizuoka 705,238)	
Among newly notified : (Japan)	
Foreign borns	9 8.4% (6.4%)
TB cases with homeless history	0 0.0% (0.9%)
Male aged 35-59, without job and receiving public assistance	0 0.0% (9.0%)

Trends	'11	'12	'13	'14	'15
Notified cases	113	96	112	127	107
Rate per 100,000 population	15.8	13.5	15.8	18.0	15.2
Sputum smear +ve. PTB	46	34	43	54	41
Rate per 100,000 population	6.4	4.8	6.1	7.6	5.8
Latent Tuberculosis Infection	42	39	34	42	10
Rate per 100,000 population	5.9	5.5	4.8	5.9	1.4

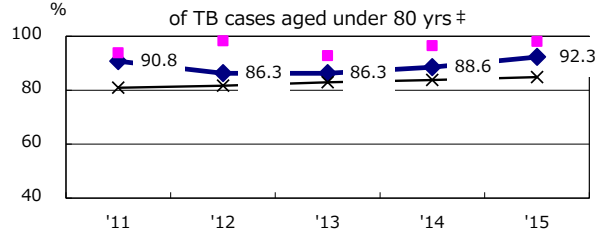
Trends of TB notification rates, all forms and smear +ve. PTB



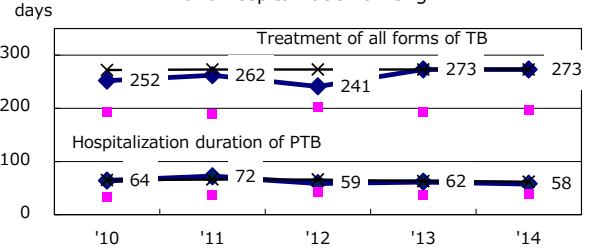
Proportion of cases with total diagnosis delay (> 3 mths) among symptomatic PTB\*



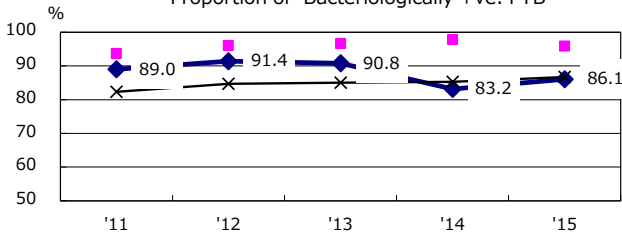
Proportion of TX with HRZ-E/S among all forms of TB cases aged under 80 yrs †



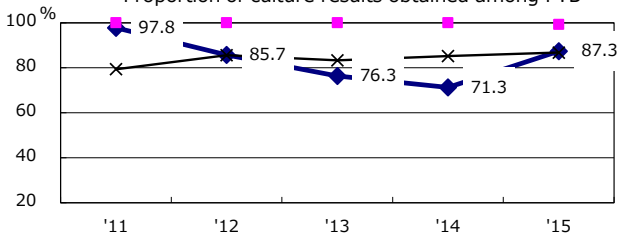
Median duration of treatment of all forms and hospitalization among PTB



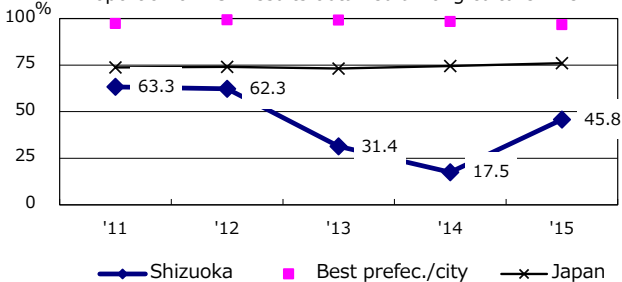
Proportion of Bacteriologically +ve. PTB



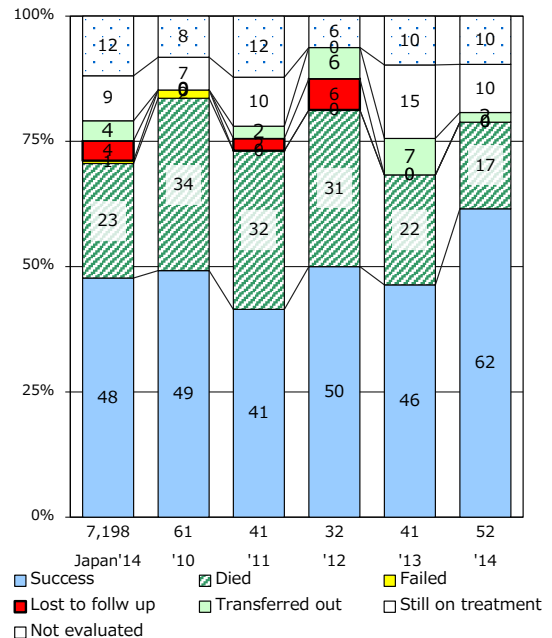
Proportion of culture results obtained among PTB



Proportion of DST results obtained among culture +ve. PTB



Treatment outcomes of new sputum smear +ve. TB



PTB : pulmonary TB

† Excluding unknown delay(%)	'11	'12	'13	'14	'15
	1.3	28.8	68.4	100.0	100.0

‡ Excluding unknown Tx(%)	'11	'12	'13	'14	'15
	5.8	1.9	0.0	0.0	0.0