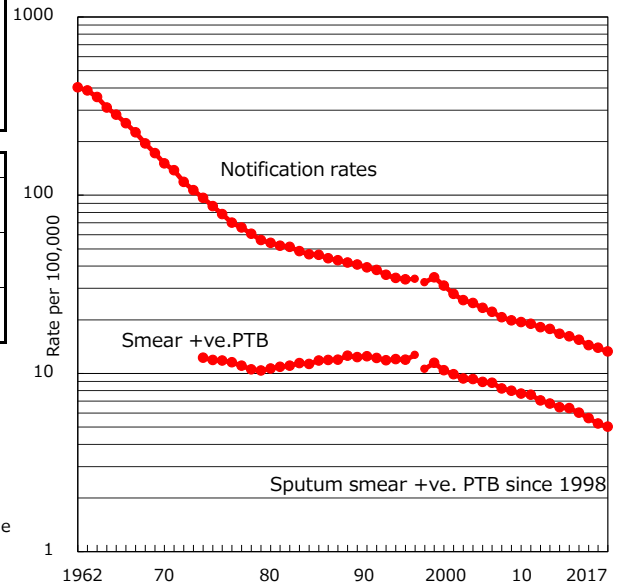


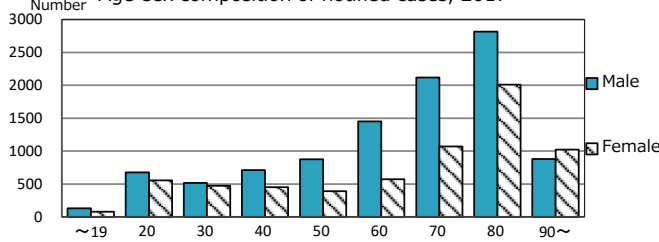
TB statistics in 2017 (Population in Japan 126,706,210)	
Among newly notified :	
Foreign borns	1,530 9.1%
TB cases with homeless history	153 0.9%
Male aged 35-59, without job and receiving public assistance	154 7.3%

Trends	'13	'14	'15	'16	2017
Notified cases	20,495	19,615	18,280	17,625	16,789
Rate per 100,000 population	16.1	15.4	14.4	13.9	13.3
Sputum smear +ve. PTB	8,119	7,651	7,131	6,642	6,359
Rate per 100,000 population	6.4	6.0	5.6	5.2	5.0
Latent Tuberculosis Infection	7,147	7,562	6,675	7,477	7,255
Rate per 100,000 population	5.6	6.0	5.3	5.9	5.7

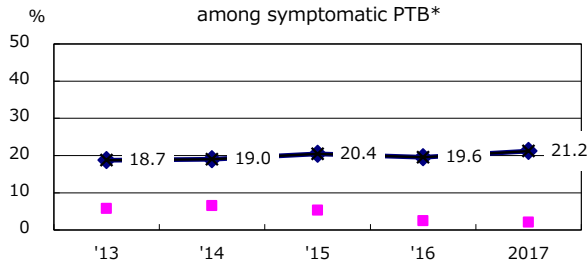
Trends of TB notification rates, all forms and smear +ve.PTB



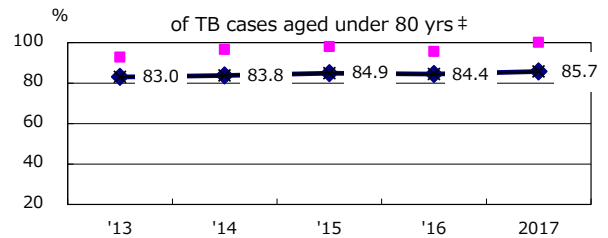
Age-sex composition of notified cases, 2017



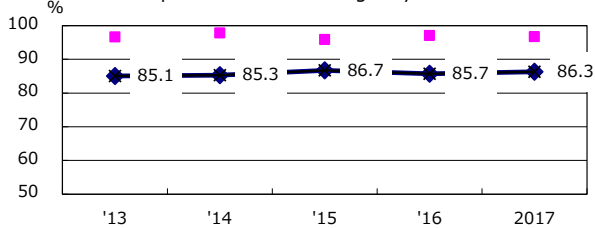
Proportion of cases with total diagnosis delay (> 3 mths) among symptomatic PTB*



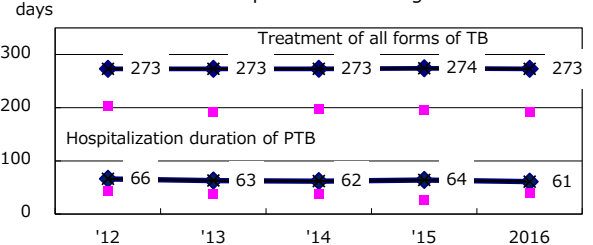
Proportion of TX with HRZ-E/S among all forms of TB cases aged under 80 yrs †



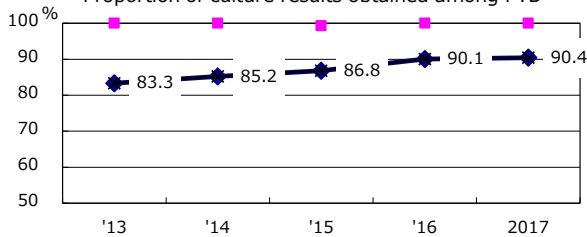
Proportion of Bacteriologically +ve. PTB



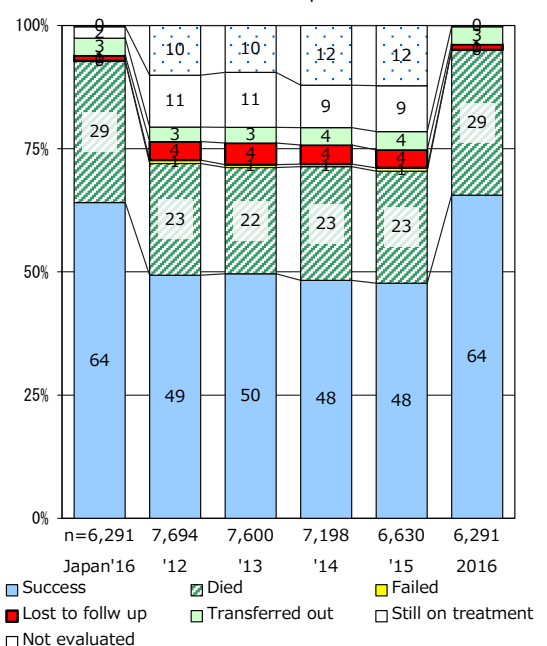
Median duration of treatment of all forms and hospitalization among PTB



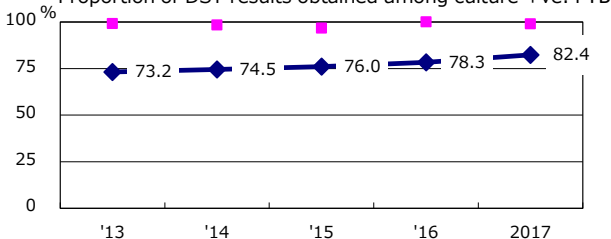
Proportion of culture results obtained among PTB



Treatment outcomes of new sputum smear +ve.TB



Proportion of DST results obtained among culture +ve. PTB



PTB : pulmonary TB

† Excluding unknown delay(%)	'13	'14	'15	'16	2017
	33.7	37.7	36.5	32.9	33.0

‡ Excluding unknown Tx(%)	'13	'14	'15	'16	2017
	2.6	2.7	2.6	2.5	2.7