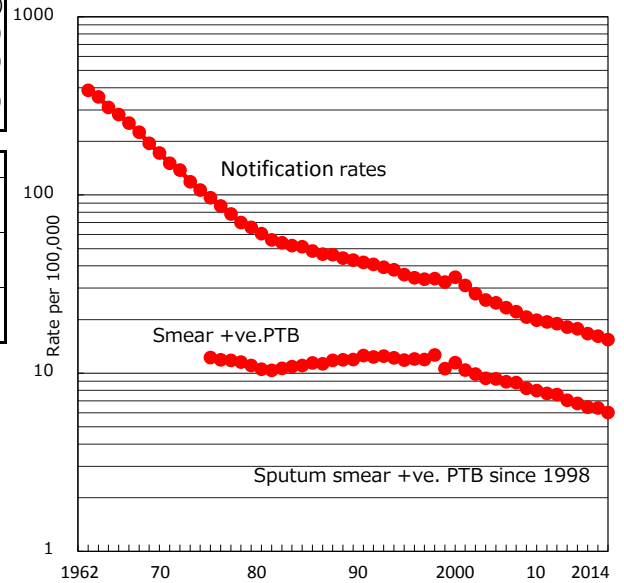


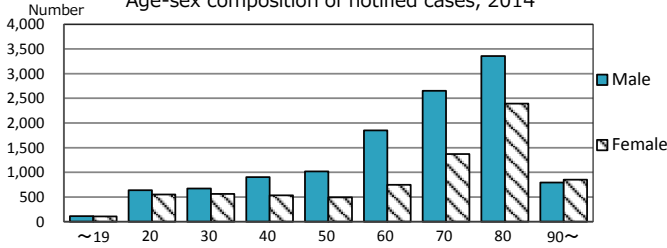
TB statistics in 2014 (Population in Japan 127,082,819)	
Among newly registered : (Japan)	
Foreign borns	1,101 5.6% (5.6%)
TB cases with homeless history	223 1.1% (1.1%)
Male aged 35-59, without job and receiving public assistance	208 8.0% (8.0%)

Trends	'10	'11	'12	'13	'14
Notified cases	23,261	22,681	21,283	20,495	19,615
Rate per 100,000 population	18.2	17.7	16.7	16.1	15.4
Sputum smear +ve. pul.cases	9,019	8,654	8,237	8,119	7,651
Rate per 100,000 population	7.0	6.8	6.5	6.4	6.0
Latent Tuberculosis Infection	4,930	10,046	8,771	7,147	7,562
Rate per 100,000 population	3.8	7.9	6.9	5.6	6.0

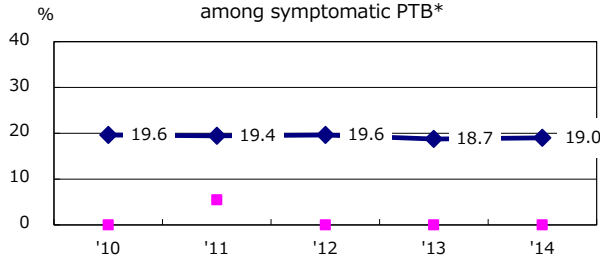
Trends of TB notification rates, all forms and smear +ve.PTB



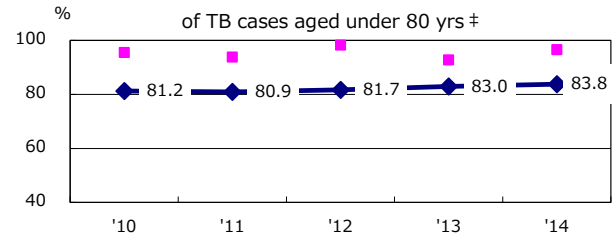
Age-sex composition of notified cases, 2014



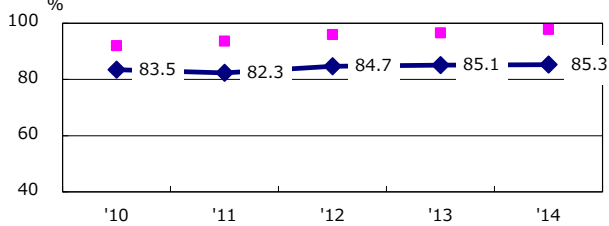
Proportion of cases with total diagnosis delay(> 3 mths) among symptomatic PTB*



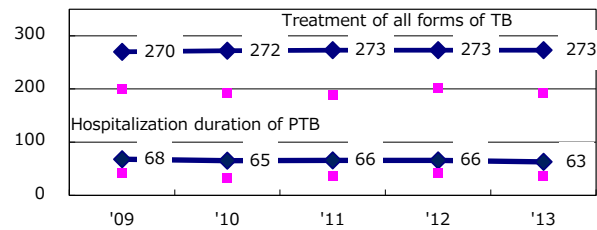
Proportion of TX with HRZ-E/S among all forms



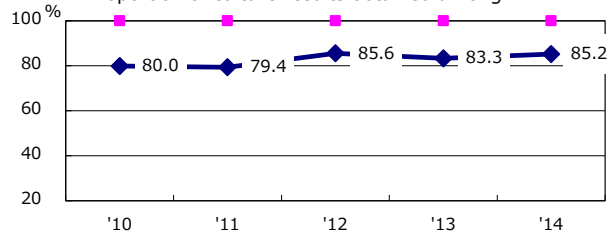
Proportion of Bacteriologically +ve. PTB



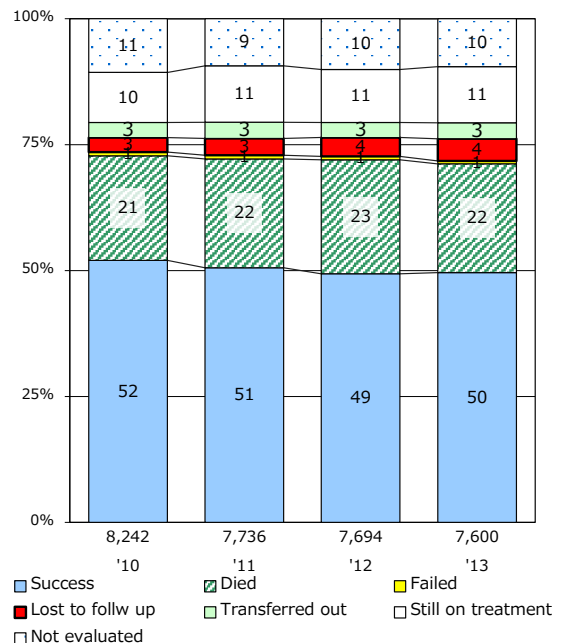
Median duration of treatment of all forms and hospitalization among PTB



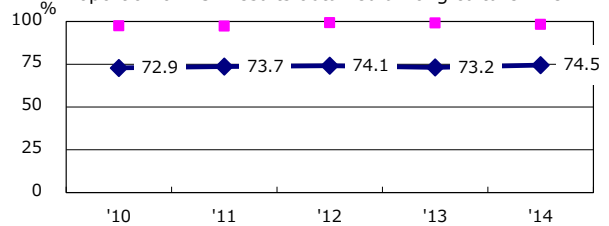
Proportion of culture results obtained among PTB



Treatment outcomes of new sputum smear +ve.TB



Proportion of DST results obtained among culture +ve. PTB



* Excluding unknown delay(%)

Year	'10	'11	'12	'13	'14
Excluding unknown delay(%)	34.1	32.6	32.6	33.7	37.7

* Excluding unknown Tx(%)

Year	'10	'11	'12	'13	'14
Excluding unknown Tx(%)	2.8	2.8	2.3	2.6	2.7