

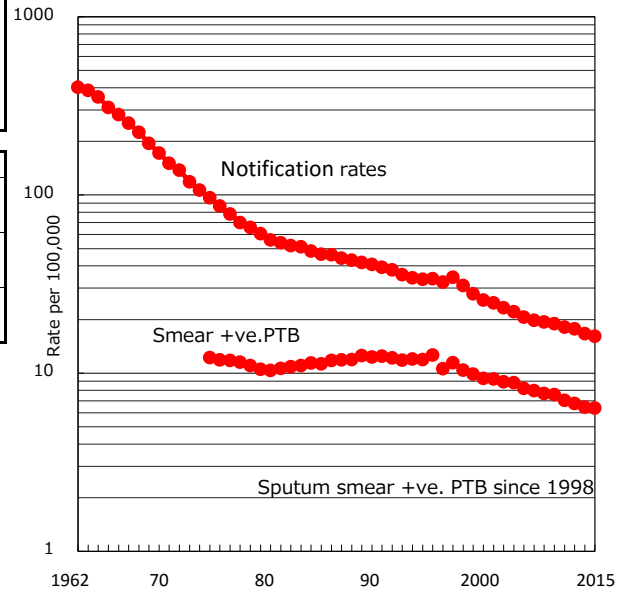
Japan

Chart of TB control activities, 2015

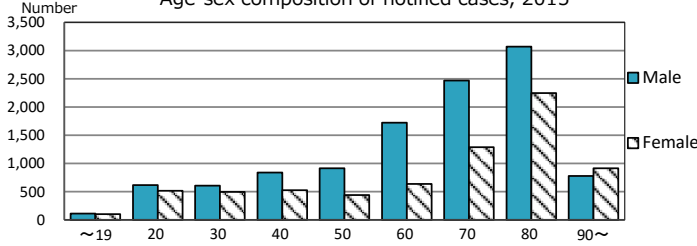
TB statistics in 2015		(Population in Japan		127,110,047)
Among newly notified :				
Foreign borns		1,164	6.4%	
TB cases with homeless history		172	0.9%	
Male aged 35-59, without job and receiving public assistance		213	9.0%	

Trends	'11	'12	'13	'14	'15
Notified cases	22,681	21,283	20,495	19,615	18,280
Rate per 100,000 population	17.7	16.7	16.1	15.4	14.4
Sputum smear +ve. PTB	8,654	8,237	8,119	7,651	7,131
Rate per 100,000 population	6.8	6.5	6.4	6.0	5.6
Latent Tuberculosis Infection	10,046	8,771	7,147	7,562	6,675
Rate per 100,000 population	7.9	6.9	5.6	6.0	5.3

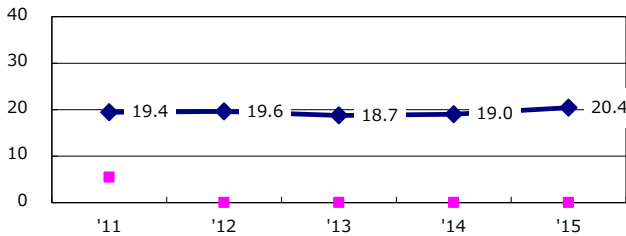
Trends of TB notification rates, all forms and smear +ve.PTB



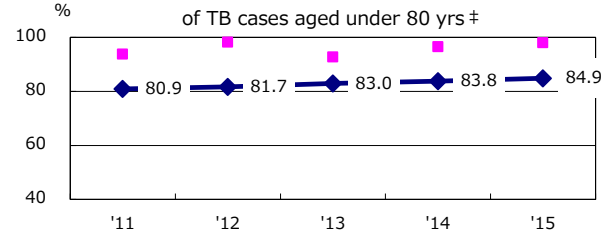
Age-sex composition of notified cases, 2015



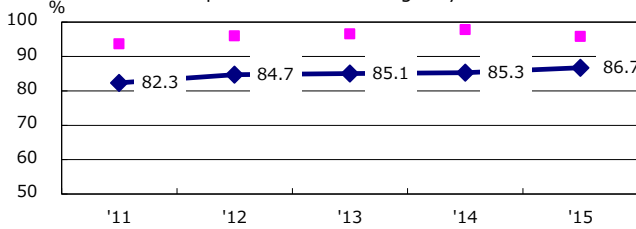
Proportion of cases with total diagnosis delay (> 3 mths) among symptomatic PTB



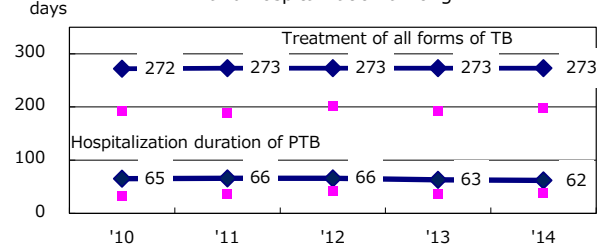
Proportion of TX with HRZ-E/S among all forms of TB cases aged under 80 yrs †



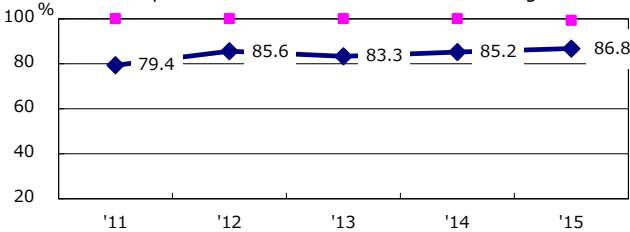
Proportion of Bacteriologically +ve. PTB



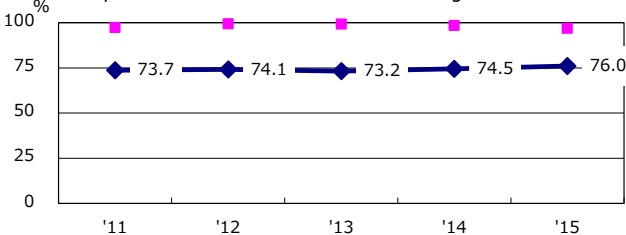
Median duration of treatment of all forms and hospitalization among PTB



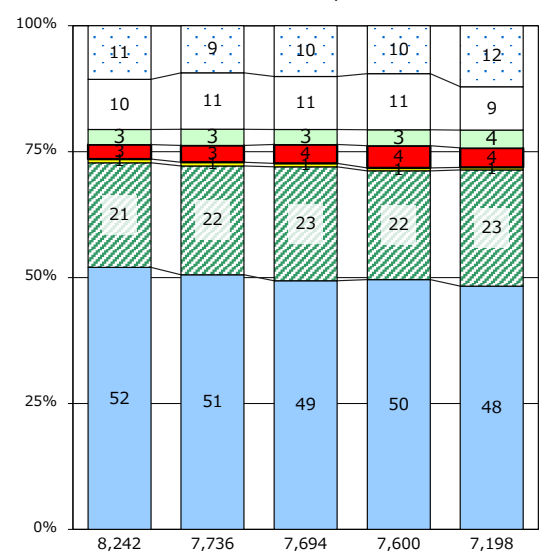
Proportion of culture results obtained among PTB



Proportion of DST results obtained among culture +ve. PTB



Treatment outcomes of new sputum smear +ve.TB



PTB : pulmonary TB

† Excluding unknown delay(%)	'11	'12	'13	'14	'15
	32.6	32.6	33.7	37.7	36.5

‡ Excluding unknown Tx(%)	'11	'12	'13	'14	'15
	2.8	2.3	2.6	2.7	2.6

Legend for Treatment outcomes: Success (blue), Died (green), Lost to follow up (red), Transferred out (yellow), Failed (orange), Still on treatment (white), Not evaluated (grey).