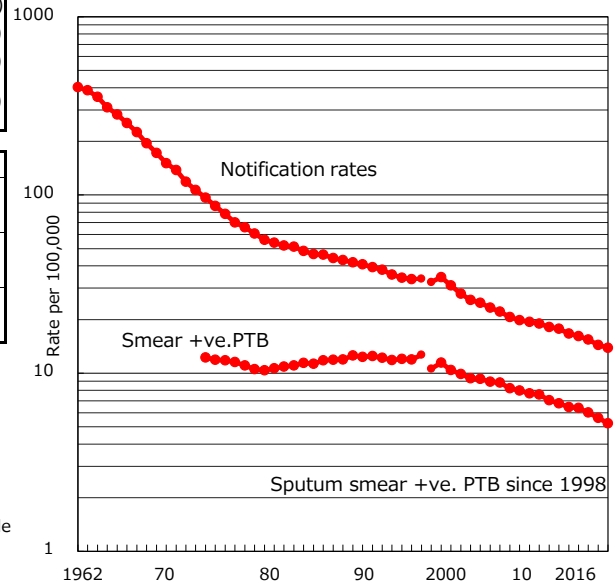


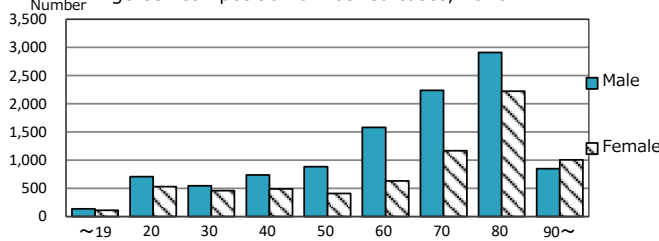
TB statistics in 2016 (Population in Japan 126,932,772)	
Among newly notified : (Japan)	
Foreign borns	1,338 7.3% (7.6%)
TB cases with homeless history	184 1.0% (1.0%)
Male aged 35-59, without job and receiving public assistance	166 7.7% (7.7%)

Trends	'12	'13	'14	'15	2016
Notified cases	21,283	20,495	19,615	18,280	17,625
Rate per 100,000 population	16.7	16.1	15.4	14.4	13.9
Sputum smear +ve. PTB	8,237	8,119	7,651	7,131	6,642
Rate per 100,000 population	6.5	6.4	6.0	5.6	5.2
Latent Tuberculosis Infection	8,771	7,147	7,562	6,675	7,477
Rate per 100,000 population	6.9	5.6	6.0	5.3	5.9

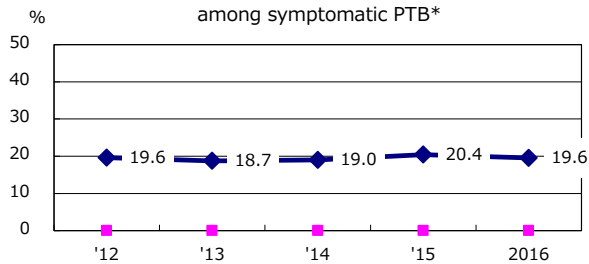
Trends of TB notification rates, all forms and smear +ve.PTB



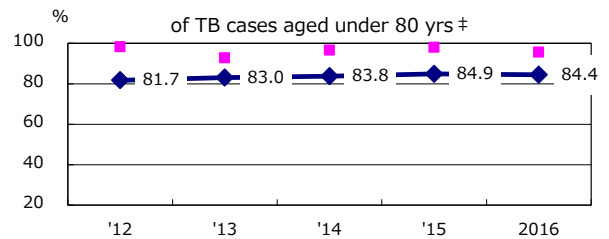
Age-sex composition of notified cases, 2016



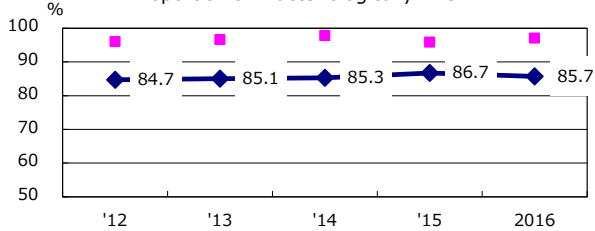
Proportion of cases with total diagnosis delay (> 3 mths) among symptomatic PTB*



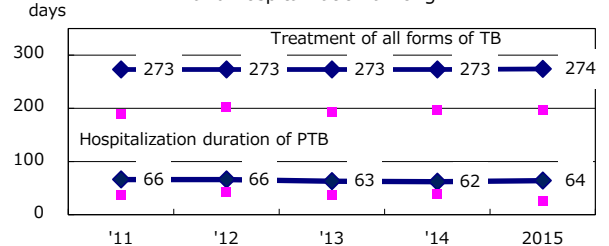
Proportion of TX with HRZ-E/S among all forms of TB cases aged under 80 yrs †



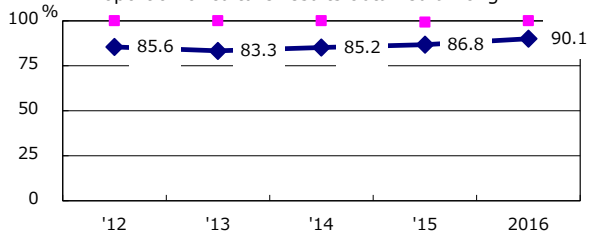
Proportion of Bacteriologically +ve. PTB



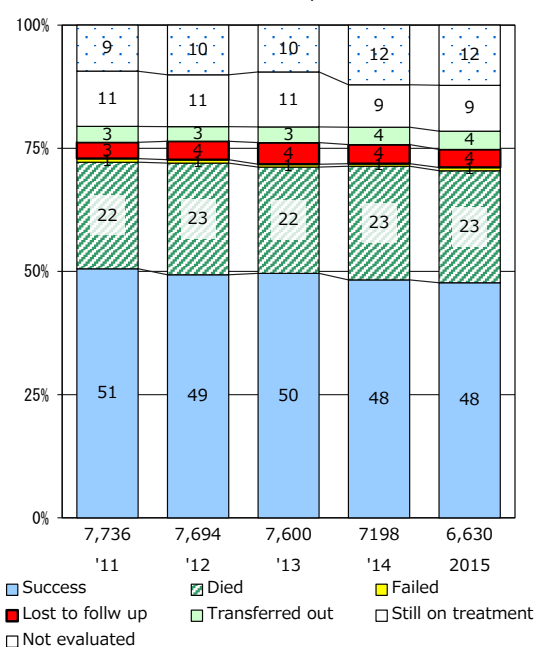
Median duration of treatment of all forms and hospitalization among PTB



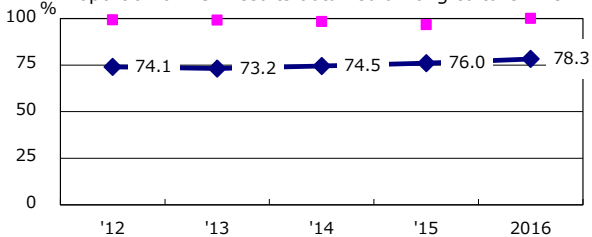
Proportion of culture results obtained among PTB



Treatment outcomes of new sputum smear +ve.TB



Proportion of DST results obtained among culture +ve. PTB



◆ Japan ■ Best prefec./city

PTB : pulmonary TB

† Excluding unknown delay(%)	'12	'13	'14	'15	2016
	32.6	33.7	37.7	36.5	32.9

‡ Excluding unknown Tx(%)	'12	'13	'14	'15	2016
	2.3	2.6	2.7	2.6	2.5