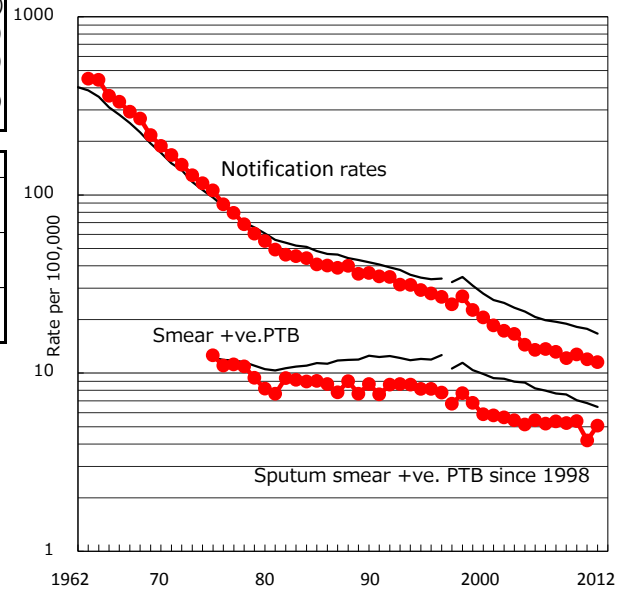


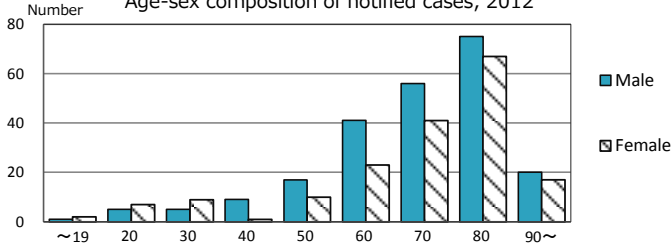
TB statistics in 2012 ( Population in Hokkaido 3,531,228 )	
Among newly registered : (Japan)	
Foreign borns	7 1.7% (5.0%)
TB cases with homeless history	0 0.0% (1.6%)
Male aged 35-59, without job and receiving public assistance	2 6.5% (10.8%)

Trends	'08	'09	'10	'11	'12
Notified cases	478	437	460	428	406
Rate per 100,000 population	13.1	12.1	12.7	12.0	11.5
Sputum smear +ve. pul.cases	195	189	194	150	179
Rate per 100,000 population	5.4	5.2	5.4	4.2	5.1
Latent Tuberculosis Infection	28	48	123	264	188
Rate per 100,000 population	0.8	1.3	3.4	7.4	5.3

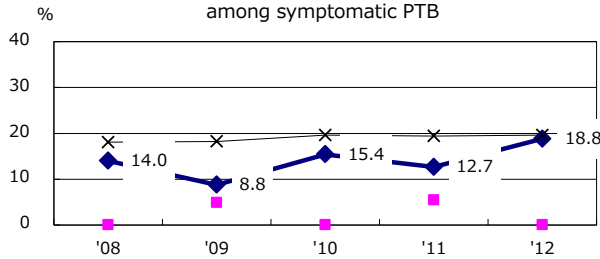
Trends of TB notification rates, all forms and smear +ve.PTB



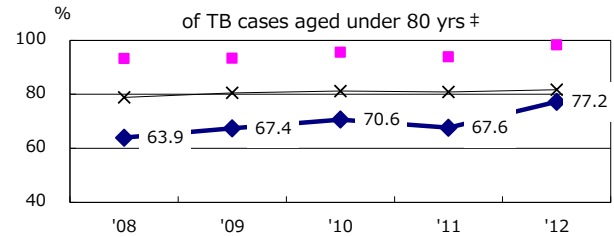
Age-sex composition of notified cases, 2012



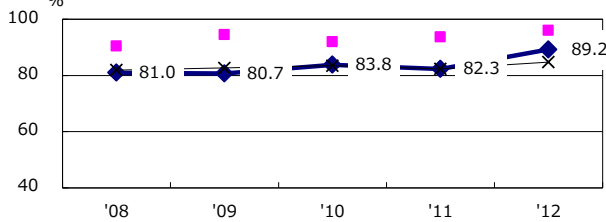
Proportion of cases with total diagnosis delay (> 3 mths) among symptomatic PTB



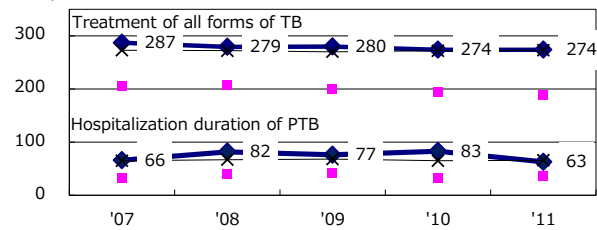
Proportion of TX with HRZ-E/S among all forms of TB cases aged under 80 yrs †



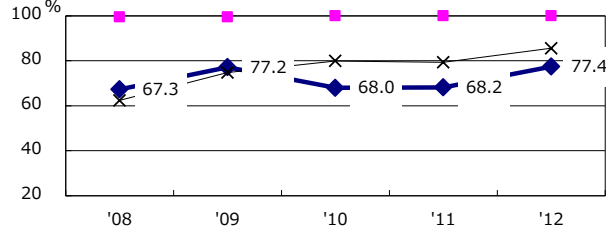
Proportion of Bacteriologically +ve. PTB



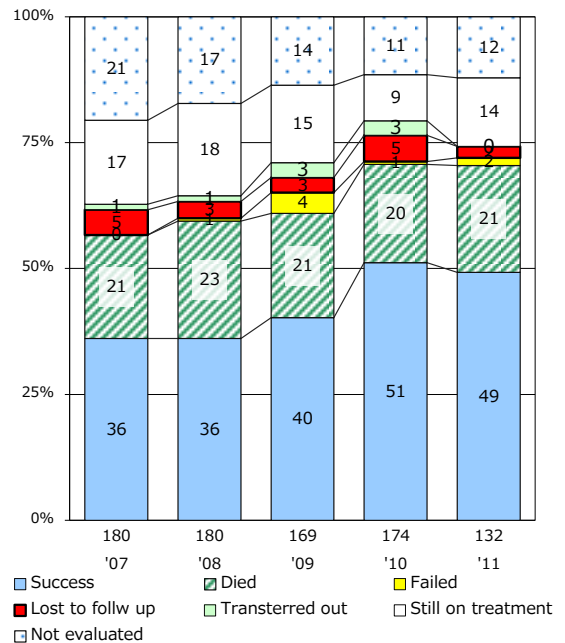
Median duration of treatment of all forms and hospitalization among PTB



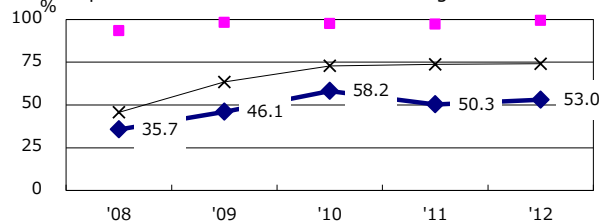
Proportion of culture results obtained among PTB



Treatment outcomes of new sputum smear +ve.TB



Proportion of DST results obtained among culture +ve. PTB



PTB : pumonary TB

† Excluding unknown delay(%)	'08	'09	'10	'11	'12
	21.4	20.2	26.4	28.4	19.9

‡ Excluding unknown Tx(%)	'08	'09	'10	'11	'12
	10.5	5.5	4.5	4.3	5.3