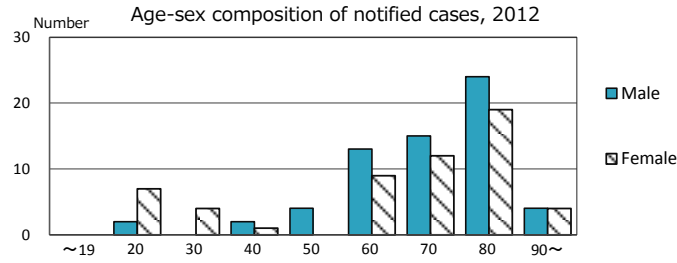
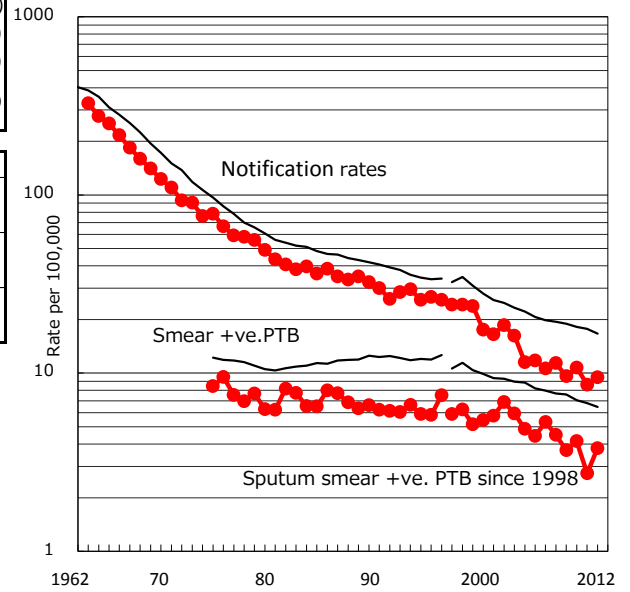


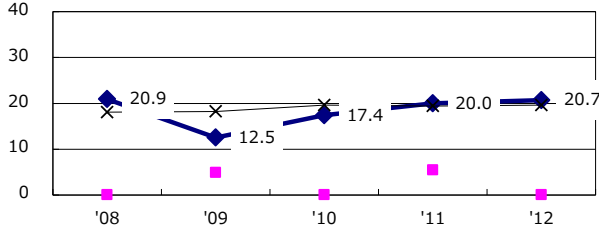
TB statistics in 2012 (Population in Miyagi 1,266,996)	
Among newly registered : (Japan)	
Foreign borns	4 3.3% (5.0%)
TB cases with homeless history	0 0.0% (1.6%)
Male aged 35-59,without job and receiveing public assistance	0 0.0% (10.8%)

Trends	'08	'09	'10	'11	'12
Notified cases	149	125	140	110	120
Rate per 100,000 population	11.4	9.6	10.8	8.6	9.5
Sputum smear +ve. pul.cases	59	48	54	35	48
Rate per 100,000 population	4.5	3.7	4.1	2.7	3.8
Latent Tuberculosis Infection	42	26	24	66	88
Rate per 100,000 population	3.2	2.0	1.8	5.2	6.9

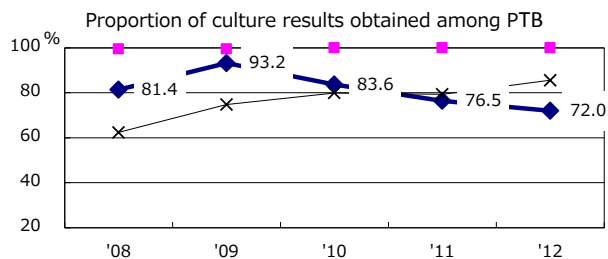
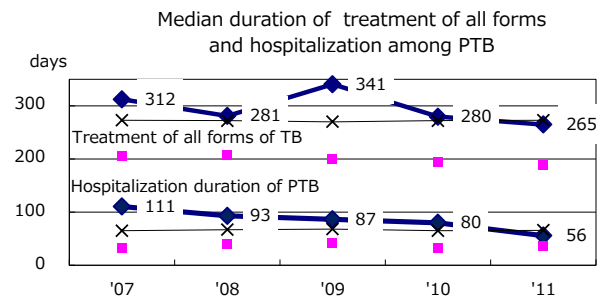
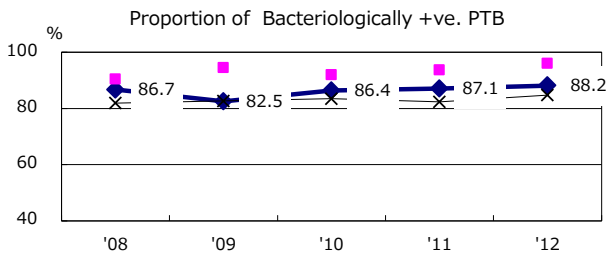
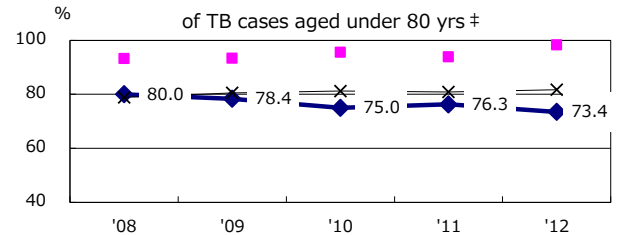
Trends of TB notification rates, all forms and smear +ve.PTB



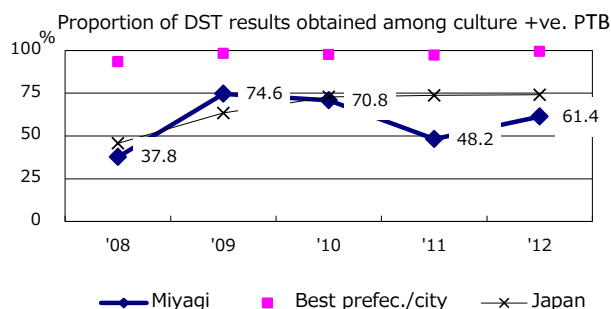
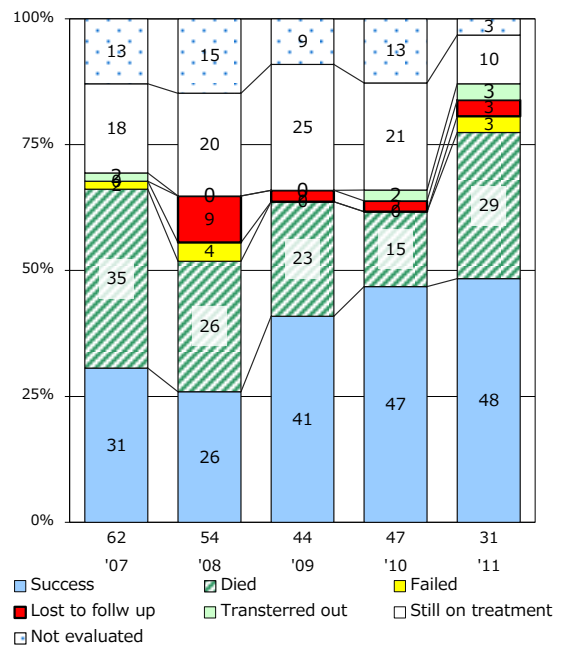
Proportion of cases with total diagnosis delay(> 3 mths) among symptomatic PTB



Proportion of TX with HRZ-E/S among all forms of TB cases aged under 80 yrs †



Treatment outcomes of new sputum smear +ve.TB



PTB : pumonary TB

† Excluding unknown delay(%)	'08	'09	'10	'11	'12
	45.6	56.8	68.9	59.0	56.1

‡ Excluding unknown Tx(%)	'08	'09	'10	'11	'12
	5.9	0.0	2.3	10.6	7.2