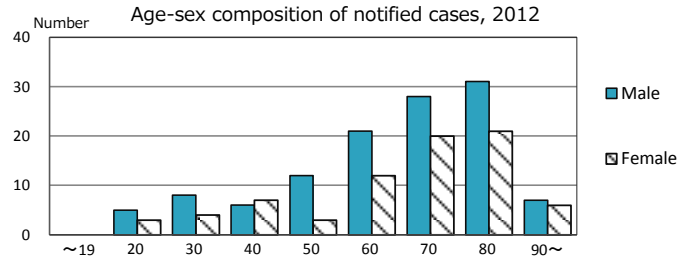
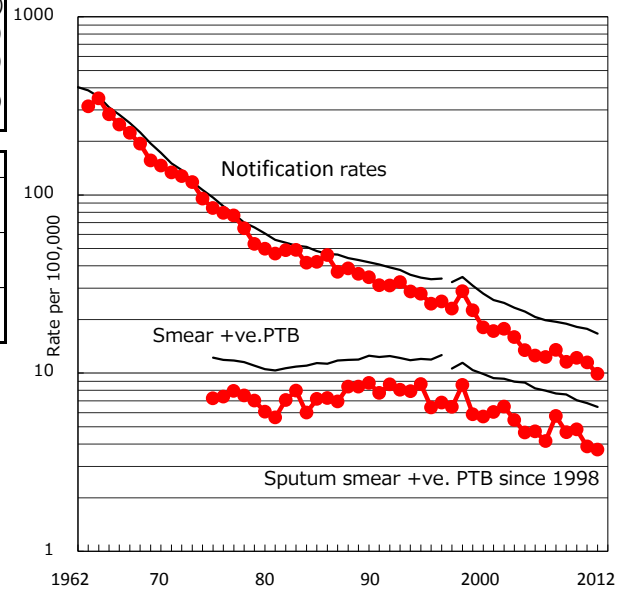


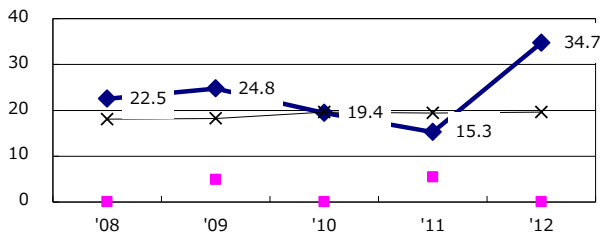
TB statistics in 2012 (Population in Fukushima 1,961,705)	
Among newly registered : (Japan)	
Foreign borns	7 3.6% (5.0%)
TB cases with homeless history	1 0.5% (1.6%)
Male aged 35-59,without job and receiveing public assistance	3 11.5% (10.8%)

Trends	'08	'09	'10	'11	'12
Notified cases	277	236	247	228	194
Rate per 100,000 population	13.5	11.6	12.2	11.5	9.9
Sputum smear +ve. pul.cases	118	95	98	77	73
Rate per 100,000 population	5.7	4.7	4.8	3.9	3.7
Latent Tuberculosis Infection	79	40	45	108	77
Rate per 100,000 population	3.8	2.0	2.2	5.4	3.9

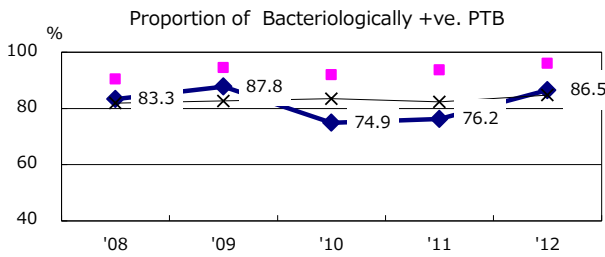
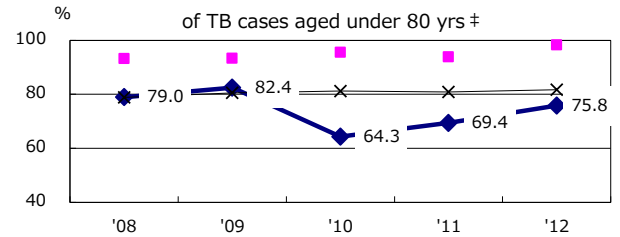
Trends of TB notification rates, all forms and smear +ve.PTB



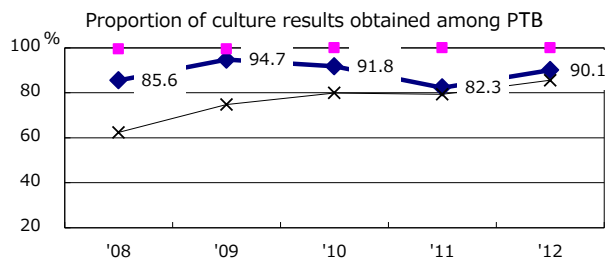
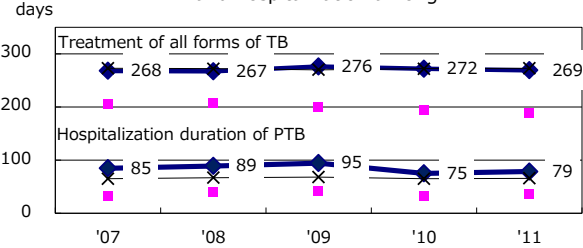
Proportion of cases with total diagnosis delay(> 3 mths) among symptomatic PTB



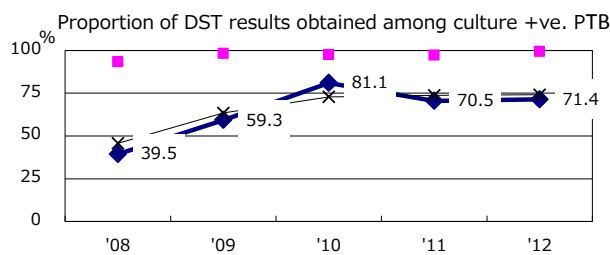
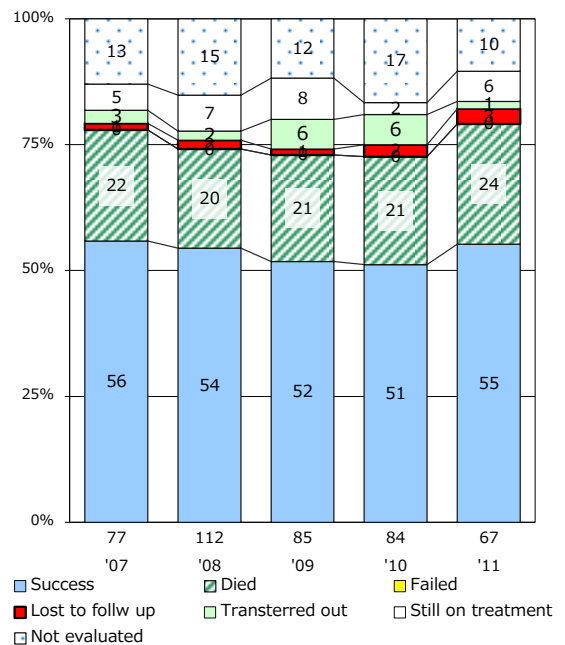
Proportion of TX with HRZ-E/S among all forms of TB cases aged under 80 yrs †



Median duration of treatment of all forms and hospitalization among PTB



Treatment outcomes of new sputum smear +ve.TB



PTB : pumonyary TB

† Excluding unknown delay(%)	'08	'09	'10	'11	'12
	16.0	28.3	34.5	47.8	32.1

‡ Excluding unknown Tx(%)	'08	'09	'10	'11	'12
	6.9	2.4	1.3	2.9	0.8