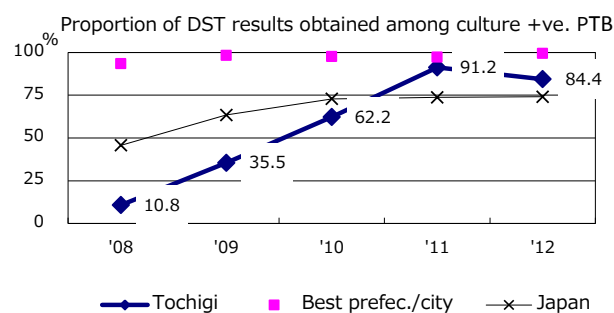
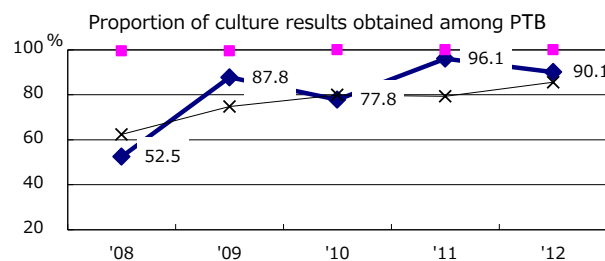
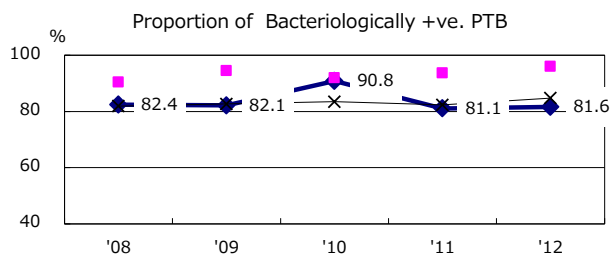
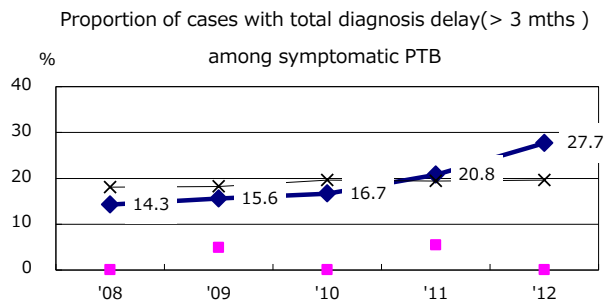
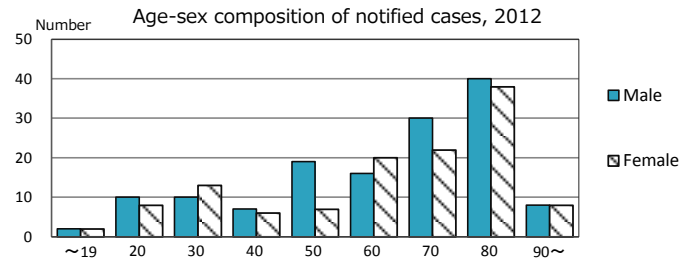


TB statistics in 2012 (Population in Tochigi 1,991,727)	
Among newly registered : (Japan)	
Foreign borns	17 6.4% (5.0%)
TB cases with homeless history	0 0.0% (1.6%)
Male aged 35-59, without job and receiving public assistance	3 8.3% (10.8%)

Trends	'08	'09	'10	'11	'12
Notified cases	282	261	256	260	266
Rate per 100,000 population	14.0	13.0	12.8	13.0	13.4
Sputum smear +ve. pul.cases	136	87	103	101	106
Rate per 100,000 population	6.8	4.3	5.1	5.0	5.3
Latent Tuberculosis Infection	17	18	36	62	53
Rate per 100,000 population	0.8	0.9	1.8	3.1	2.7

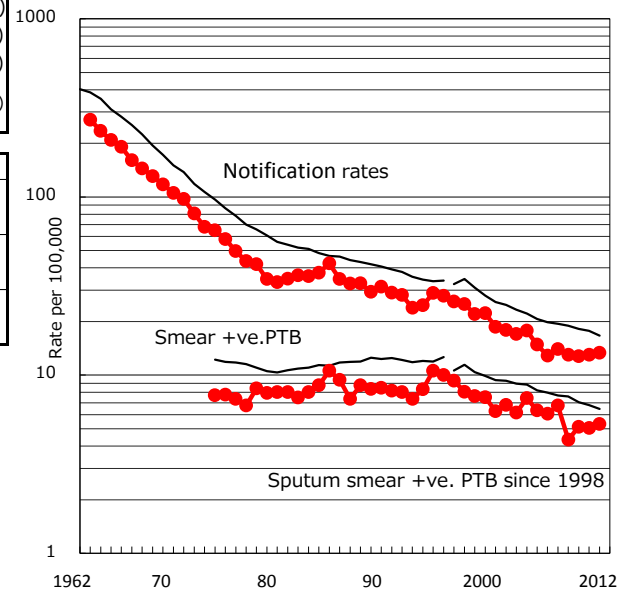


PTB : pulmonary TB

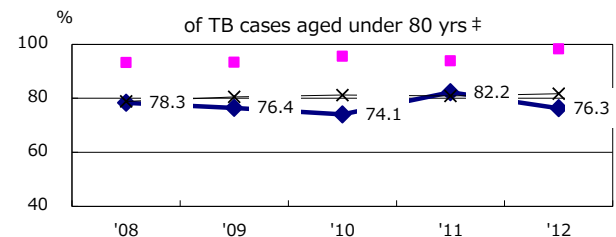
† Excluding unknown delay(%)

	'08	'09	'10	'11	'12
65.2	50.3	16.9	0.0	11.9	

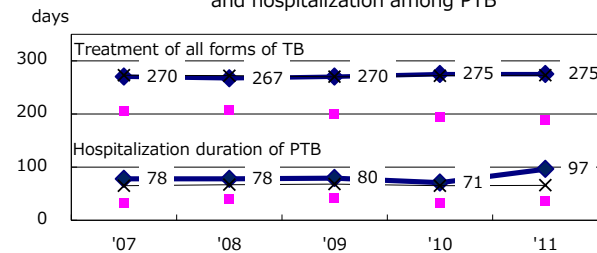
Trends of TB notification rates, all forms and smear +ve.PTB



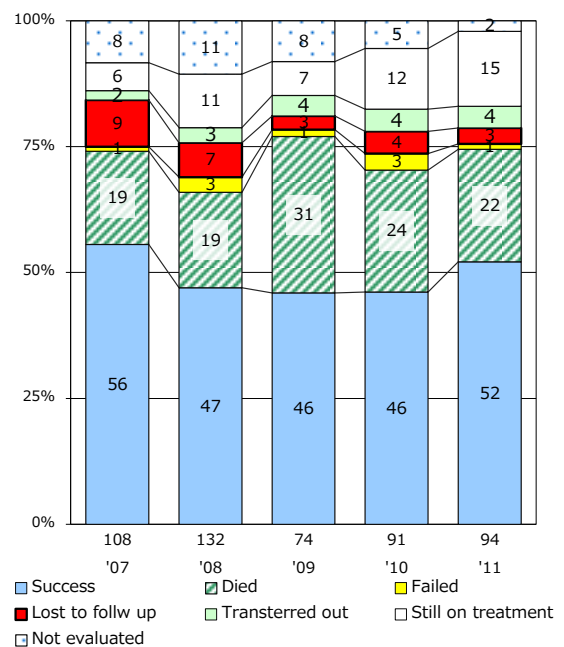
Proportion of TX with HRZ-E/S among all forms



Median duration of treatment of all forms and hospitalization among PTB



Treatment outcomes of new sputum smear +ve.TB



† Excluding unknown Tx(%)

	'08	'09	'10	'11	'12
9.3	4.2	4.2	1.2	1.7	