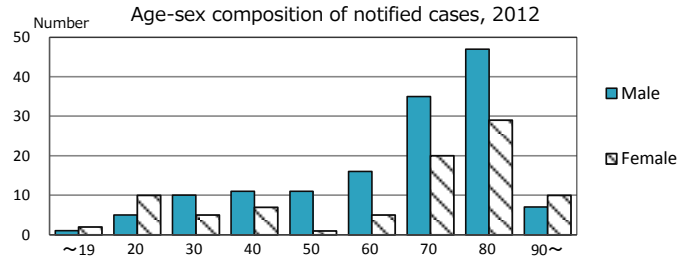
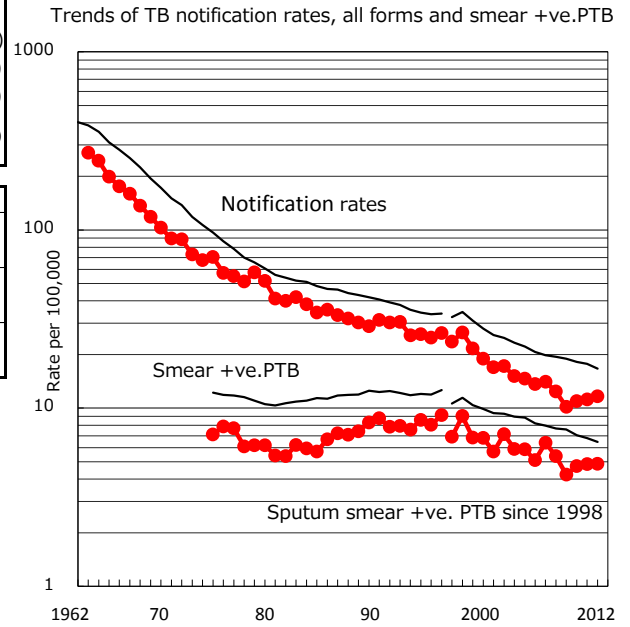
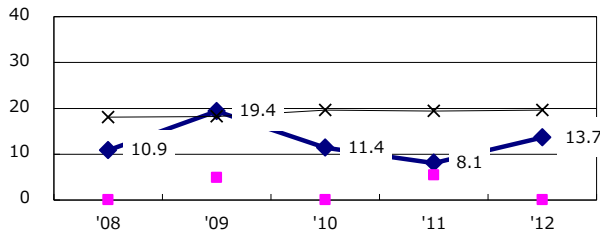


TB statistics in 2012 (Population in Gunma 1,992,160)	
Among newly registered : (Japan)	
Foreign borns	21 9.1% (5.0%)
TB cases with homeless history	7 3.0% (1.6%)
Male aged 35-59,without job and receiveing public assistance	1 3.1% (10.8%)

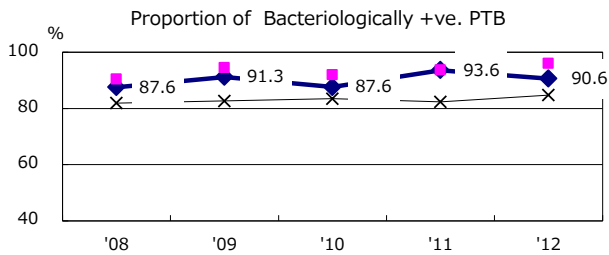
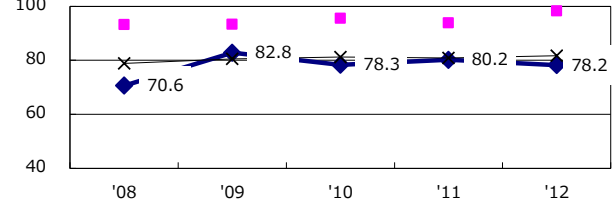
Trends	'08	'09	'10	'11	'12
Notified cases	249	204	220	224	232
Rate per 100,000 population	12.4	10.2	11.0	11.2	11.6
Sputum smear +ve. pul.cases	108	85	95	97	97
Rate per 100,000 population	5.4	4.2	4.7	4.8	4.9
Latent Tuberculosis Infection	22	19	20	42	56
Rate per 100,000 population	1.1	0.9	1.0	2.1	2.8



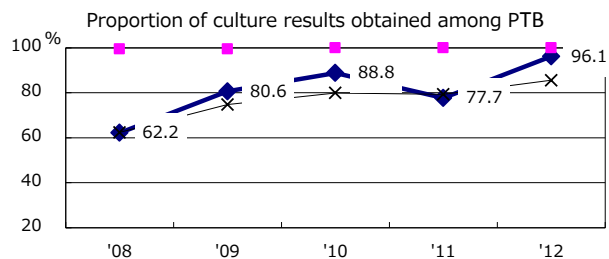
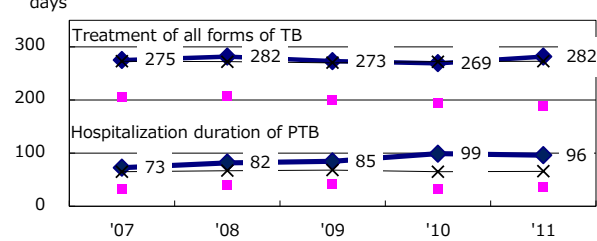
Proportion of cases with total diagnosis delay(> 3 mths) among symptomatic PTB



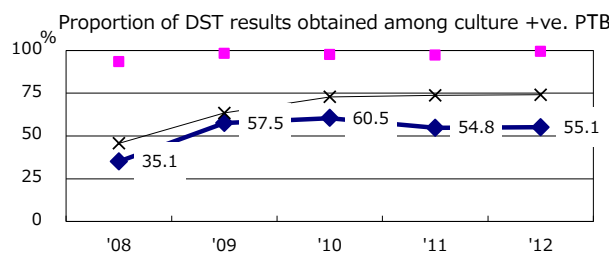
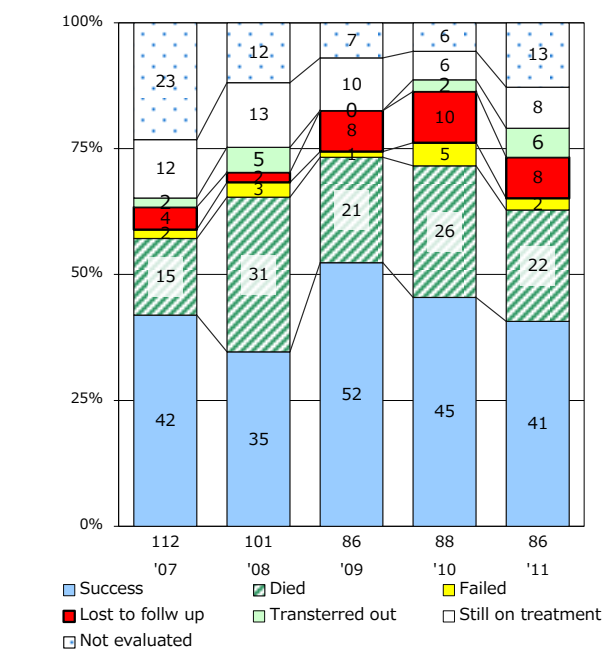
Proportion of TX with HRZ-E/S among all forms of TB cases aged under 80 yrs †



Median duration of treatment of all forms and hospitalization among PTB



Treatment outcomes of new sputum smear +ve.TB



PTB : pumonyary TB

† Excluding unknown delay(%)	'08	'09	'10	'11	'12
	36.6	25.2	19.8	22.7	4.8

‡ Excluding unknown Tx(%)	'08	'09	'10	'11	'12
	2.4	1.6	2.3	1.6	4.3