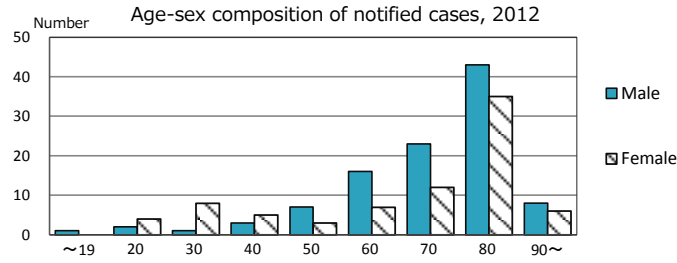
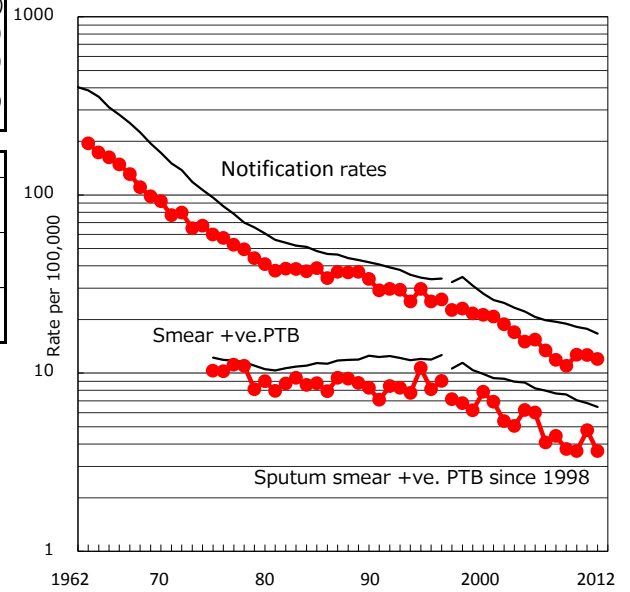


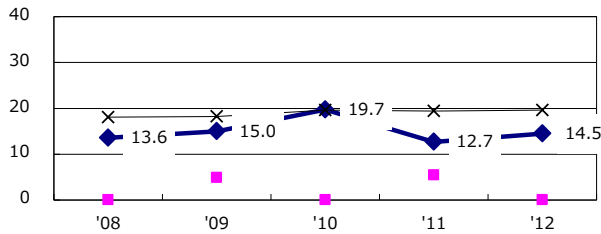
TB statistics in 2012 ( Population in Niigata 1,535,295 )	
Among newly registered : (Japan)	
Foreign borns	9 4.9% (5.0%)
TB cases with homeless history	1 0.5% (1.6%)
Male aged 35-59, without job and receiving public assistance	0 0.0% (10.8%)

Trends	'08	'09	'10	'11	'12
Notified cases	187	173	198	196	184
Rate per 100,000 population	11.8	11.0	12.7	12.6	12.0
Sputum smear +ve. pul.cases	70	59	57	74	56
Rate per 100,000 population	4.4	3.7	3.6	4.8	3.6
Latent Tuberculosis Infection	8	11	42	57	58
Rate per 100,000 population	0.5	0.7	2.7	3.7	3.8

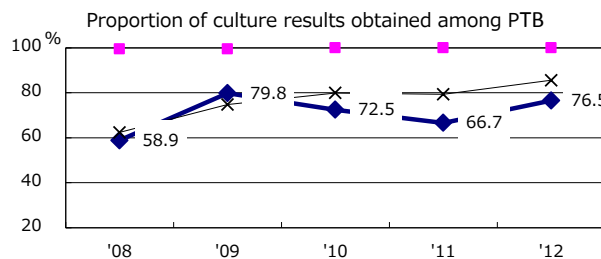
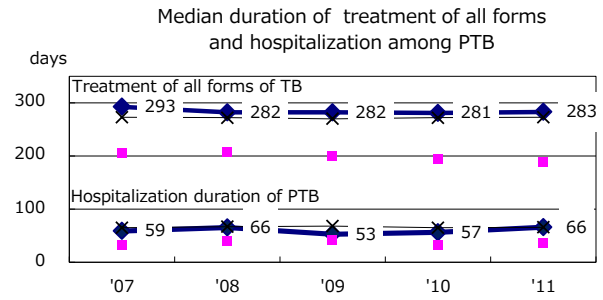
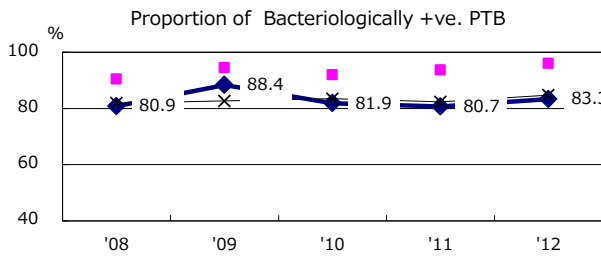
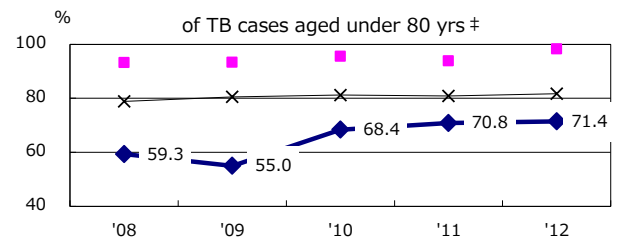
Trends of TB notification rates, all forms and smear +ve.PTB



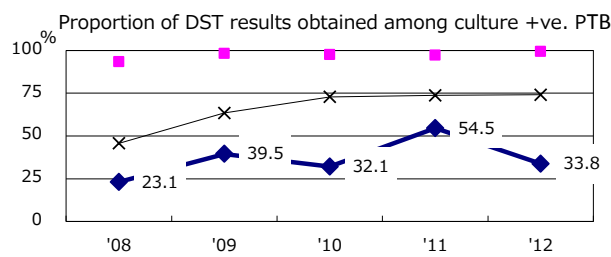
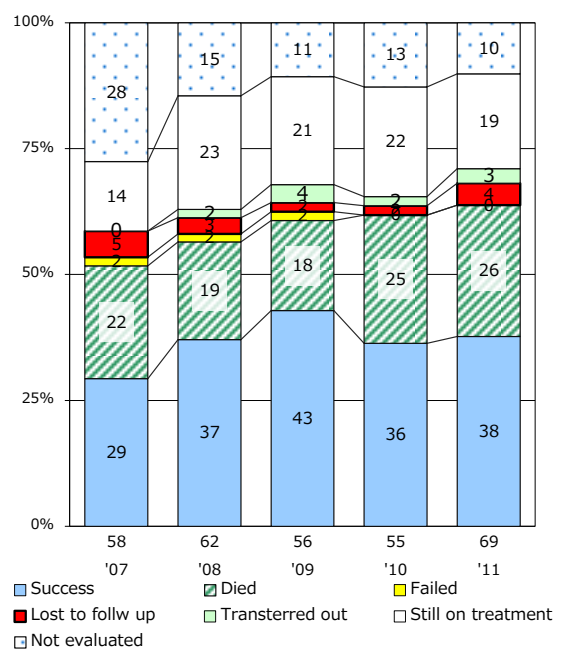
Proportion of cases with total diagnosis delay (> 3 mths) among symptomatic PTB



Proportion of TX with HRZ-E/S among all forms of TB cases aged under 80 yrs †



Treatment outcomes of new sputum smear +ve.TB



PTB : pumonary TB

† Excluding unknown delay(%)	'08	'09	'10	'11	'12
	22.1	20.8	30.9	45.7	37.3

‡ Excluding unknown Tx(%)	'08	'09	'10	'11	'12
	6.3	2.0	4.2	3.0	1.1