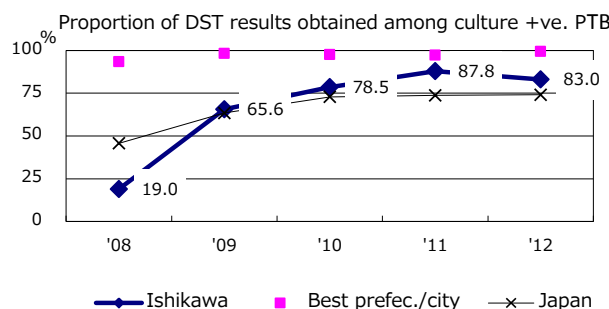
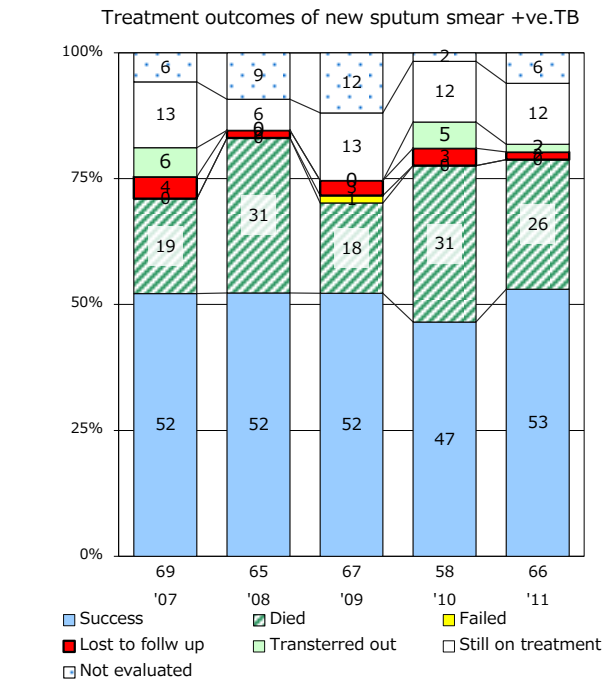
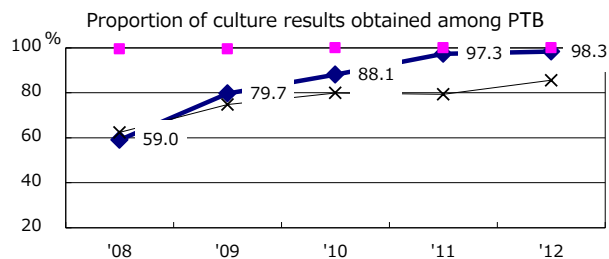
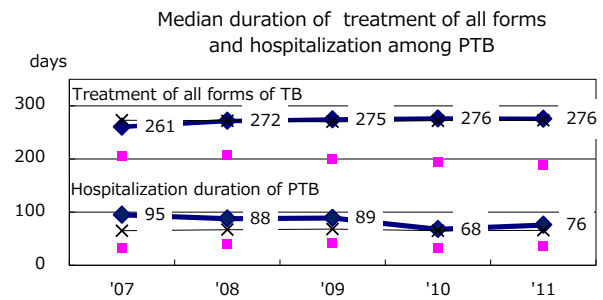
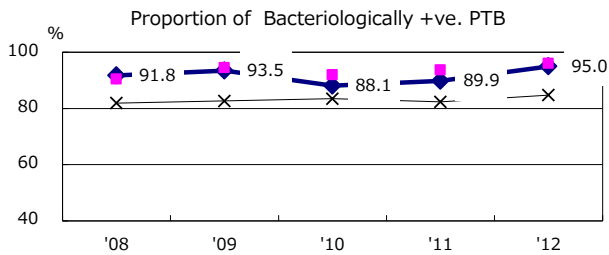
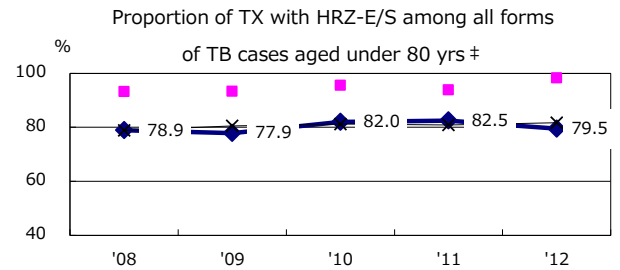
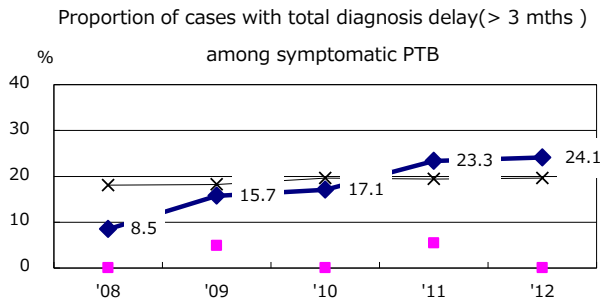
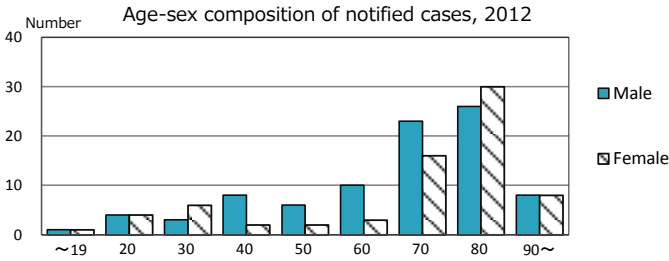
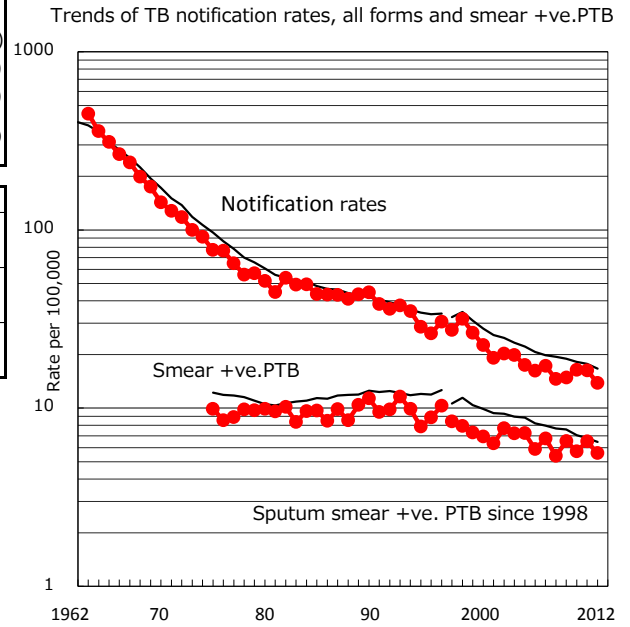


|  |                |
|--|----------------|
| TB statistics in 2012 ( Population in Ishikawa 1,162,919 )   |                |
| Among newly registered : (Japan)                             |                |
| Foreign borns  | 6 3.7% (5.0%)  |
| TB cases with homeless history                               | 2 1.2% (1.6%)  |
| Male aged 35-59, without job and receiving public assistance | 0 0.0% (10.8%) |

| Trends                        | '08  | '09  | '10  | '11  | '12  |
|-------------------------------|------|------|------|------|------|
| Notified cases                | 170  | 173  | 192  | 190  | 161  |
| Rate per 100,000 population   | 14.6 | 14.9 | 16.4 | 16.3 | 13.8 |
| Sputum smear +ve. pul.cases   | 63   | 76   | 67   | 76   | 65   |
| Rate per 100,000 population   | 5.4  | 6.5  | 5.7  | 6.5  | 5.6  |
| Latent Tuberculosis Infection | 10   | 24   | 20   | 82   | 35   |
| Rate per 100,000 population   | 0.9  | 2.1  | 1.7  | 7.0  | 3.0  |



PTB : pumonyary TB

† Excluding unknown delay(%)

|      | '08  | '09  | '10  | '11 | '12 |
|------|------|------|------|-----|-----|
| 39.2 | 23.3 | 28.7 | 10.0 | 8.8 |     |

‡ Excluding unknown Tx(%)

|     | '08 | '09 | '10 | '11 | '12 |
|-----|-----|-----|-----|-----|-----|
| 5.0 | 1.0 | 2.0 | 2.8 | 1.1 |     |