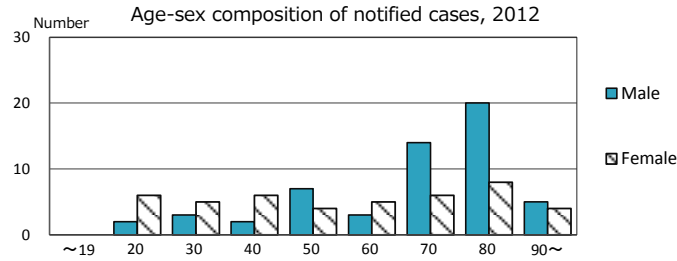
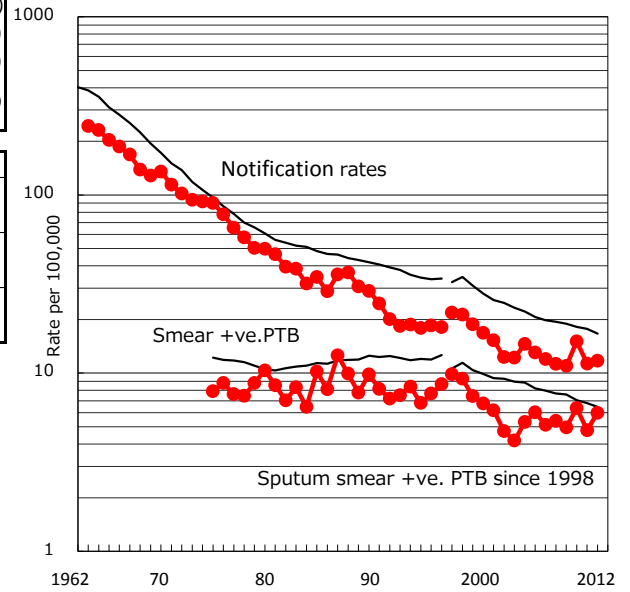


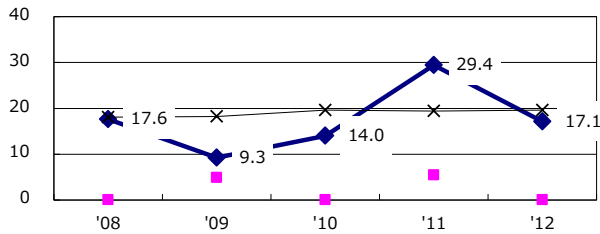
TB statistics in 2012 (Population in Yamanashi 852,376)	
Among newly registered : (Japan)	
Foreign borns	17 17.0% (5.0%)
TB cases with homeless history	2 2.0% (1.6%)
Male aged 35-59,without job and receiveing public assistance	2 16.7% (10.8%)

Trends	'08	'09	'10	'11	'12
Notified cases	98	95	130	97	100
Rate per 100,000 population	11.3	11.0	15.1	11.3	11.7
Sputum smear +ve. pul.cases	47	43	55	41	51
Rate per 100,000 population	5.4	5.0	6.4	4.8	6.0
Latent Tuberculosis Infection	6	3	23	42	46
Rate per 100,000 population	0.7	0.3	2.7	4.9	5.4

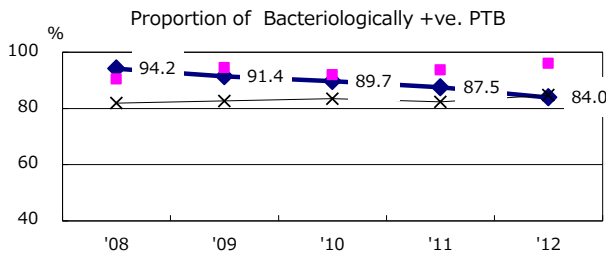
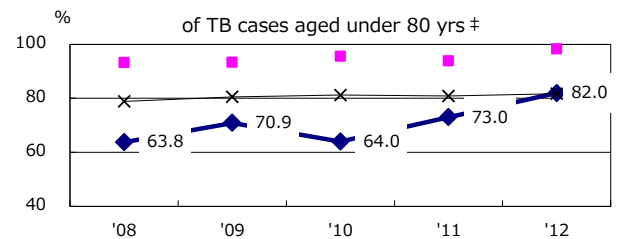
Trends of TB notification rates, all forms and smear +ve.PTB



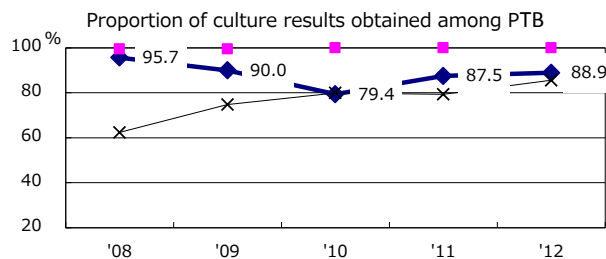
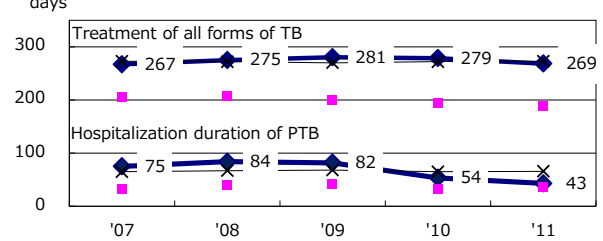
Proportion of cases with total diagnosis delay(> 3 mths) among symptomatic PTB



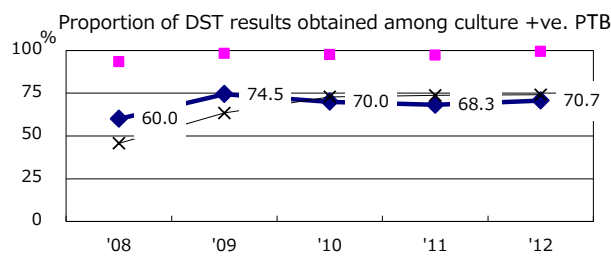
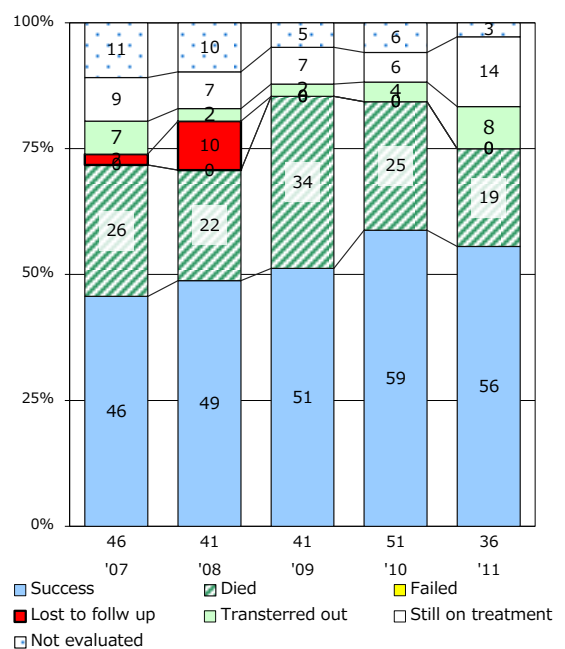
Proportion of TX with HRZ-E/S among all forms of TB cases aged under 80 yrs †



Median duration of treatment of all forms and hospitalization among PTB



Treatment outcomes of new sputum smear +ve.TB



PTB : pumonyary TB

† Excluding unknown delay(%)	'08	'09	'10	'11	'12
	7.3	5.3	29.6	34.6	40.7

‡ Excluding unknown Tx(%)	'08	'09	'10	'11	'12
	1.7	0.0	1.3	1.6	3.2