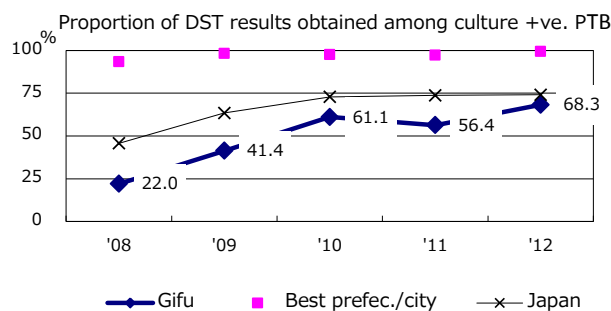
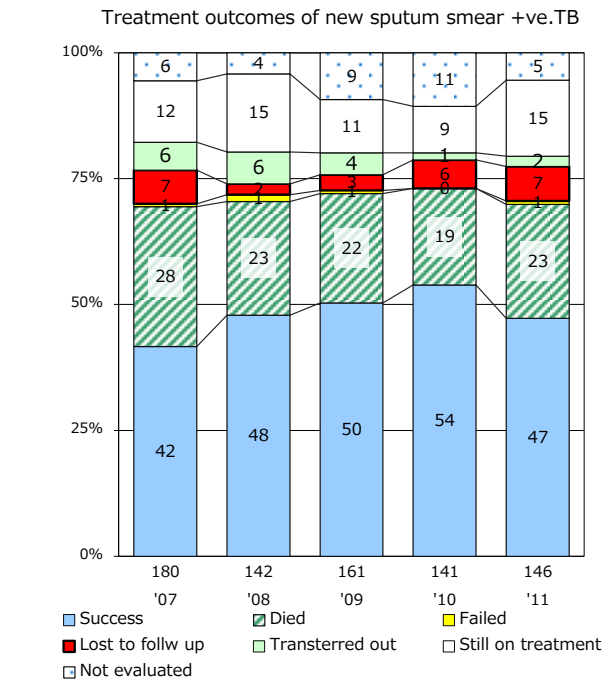
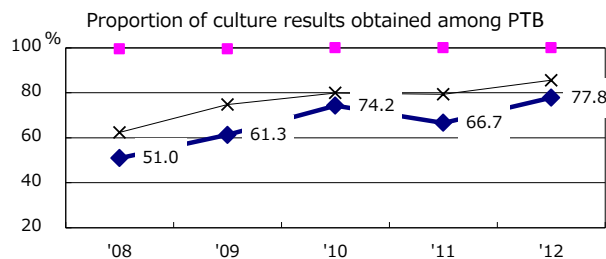
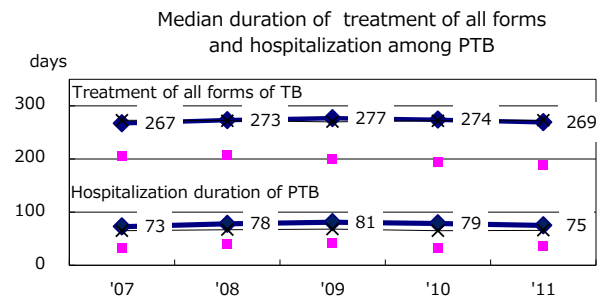
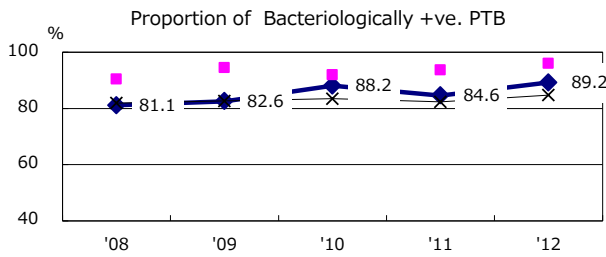
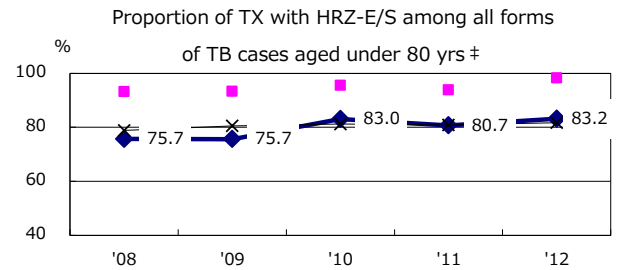
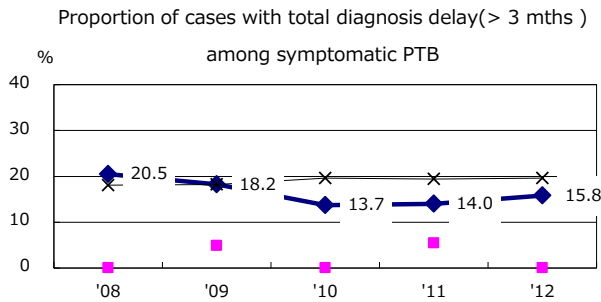
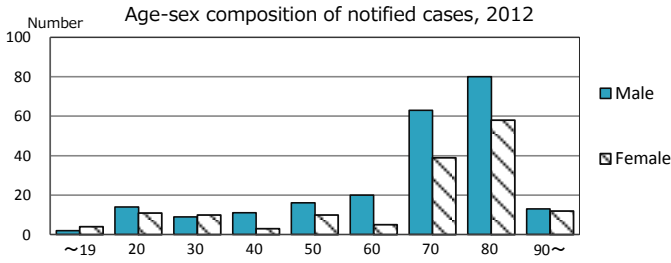
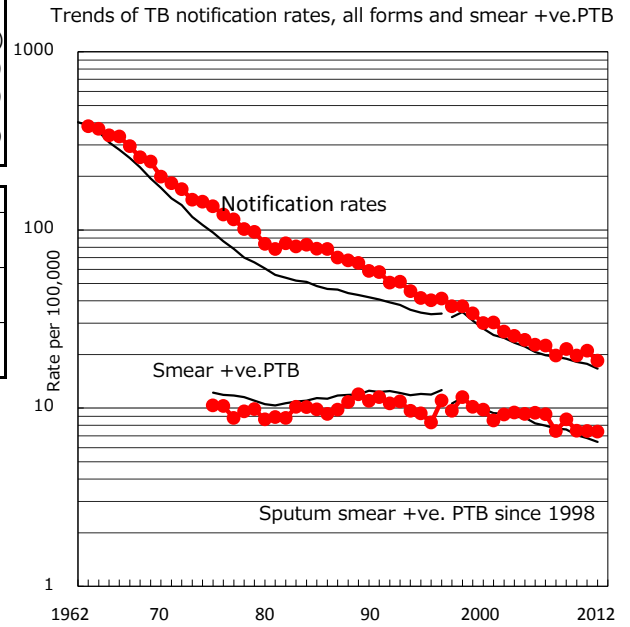


TB statistics in 2012 (Population in Gifu 2,061,379)	
Among newly registered : (Japan)	
Foreign borns	29 7.6% (5.0%)
TB cases with homeless history	1 0.3% (1.6%)
Male aged 35-59, without job and receiving public assistance	2 5.6% (10.8%)

Trends	'08	'09	'10	'11	'12
Notified cases	414	448	410	434	380
Rate per 100,000 population	19.7	21.4	19.7	21.0	18.4
Sputum smear +ve. pul.cases	156	181	155	154	152
Rate per 100,000 population	7.4	8.7	7.4	7.4	7.4
Latent Tuberculosis Infection	65	56	49	144	89
Rate per 100,000 population	3.1	2.7	2.4	7.0	4.3



PTB : pumonary TB

† Excluding unknown delay(%)	'08	'09	'10	'11	'12
	12.8	21.6	20.8	27.8	22.3

‡ Excluding unknown Tx(%)	'08	'09	'10	'11	'12
	1.1	2.2	0.0	0.8	1.4