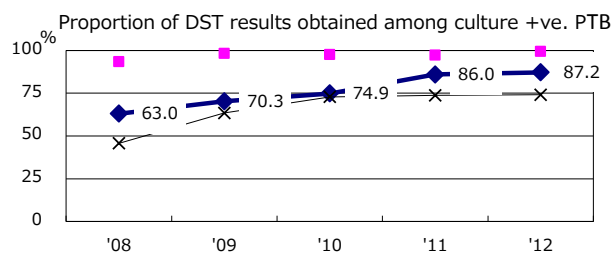
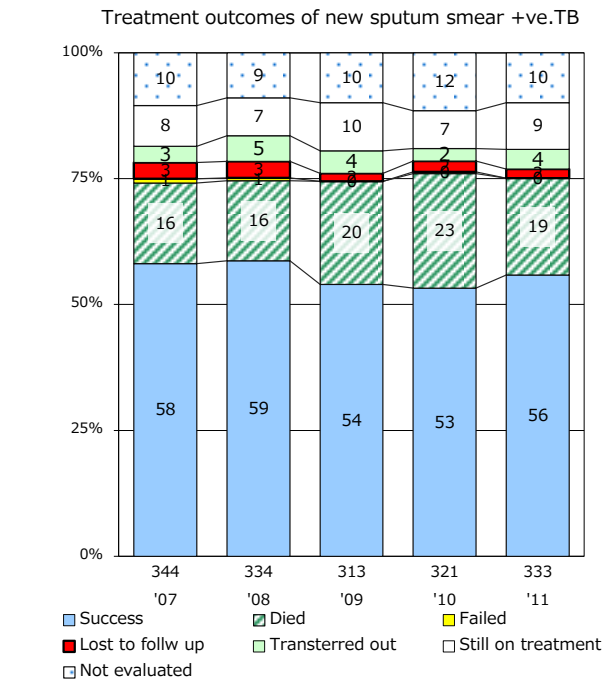
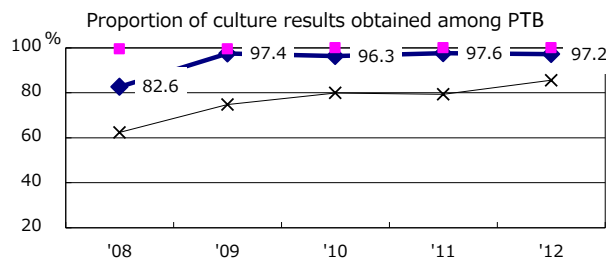
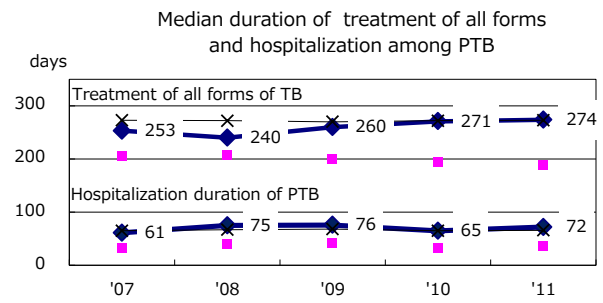
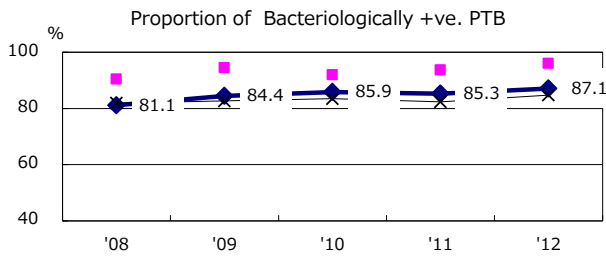
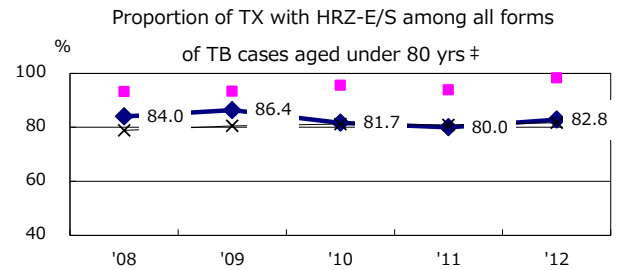
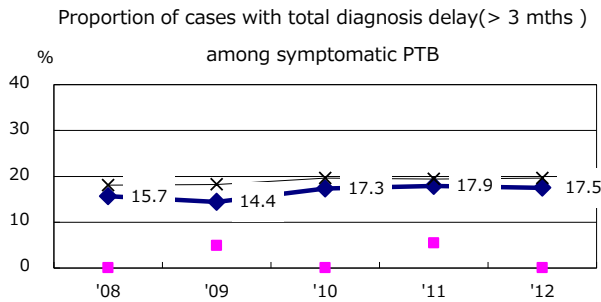
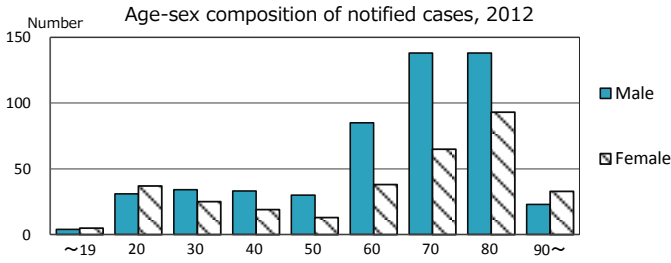
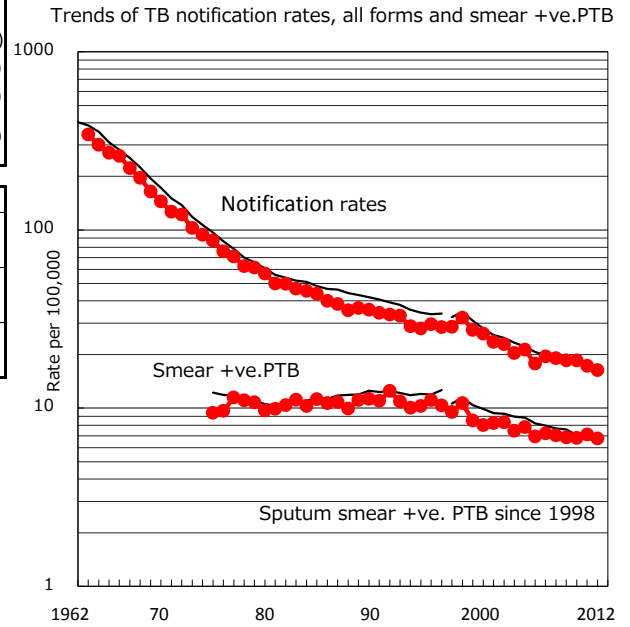


TB statistics in 2012 (Population in Aichi 5,160,257)	
Among newly registered :	(Japan)
Foreign borns	77 9.1% (5.0%)
TB cases with homeless history	6 0.7% (1.6%)
Male aged 35-59, without job and receiving public assistance	7 7.2% (10.8%)

Trends	'08	'09	'10	'11	'12
Notified cases	982	957	952	889	844
Rate per 100,000 population	19.0	18.5	18.5	17.3	16.4
Sputum smear +ve. pul.cases	362	354	350	366	348
Rate per 100,000 population	7.0	6.9	6.8	7.1	6.7
Latent Tuberculosis Infection	240	219	191	400	285
Rate per 100,000 population	4.7	4.2	3.7	7.8	5.5



PTB : pumonary TB

† Excluding unknown delay(%)	'08	'09	'10	'11	'12
	26.9	21.0	18.2	30.6	42.0

‡ Excluding unknown Tx(%)	'08	'09	'10	'11	'12
	1.7	2.2	2.2	2.5	1.6