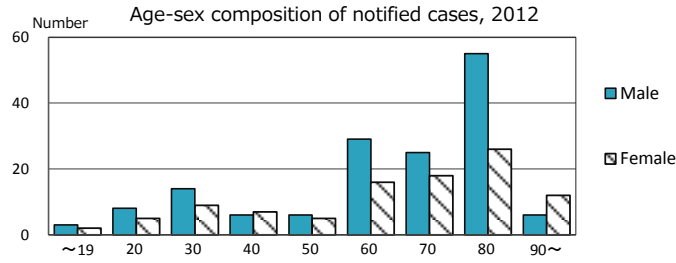
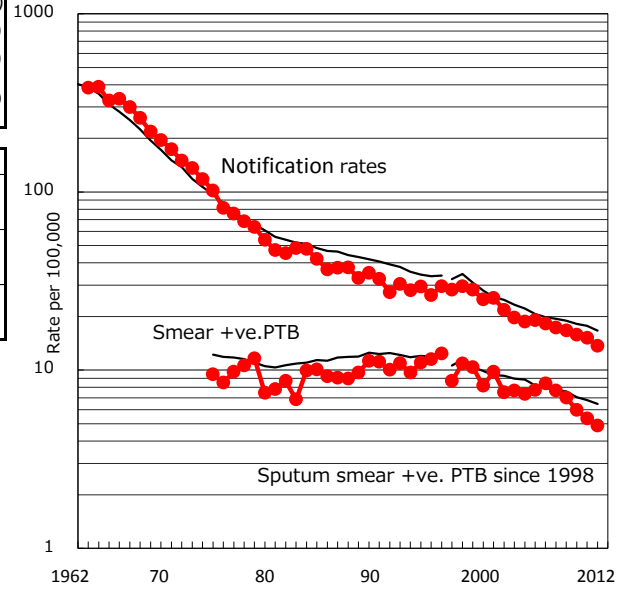


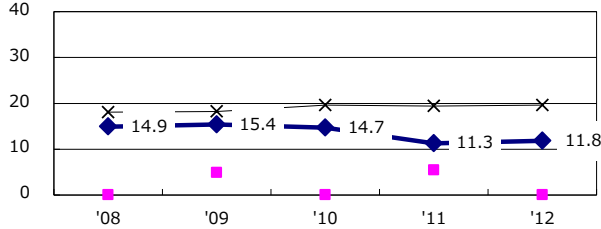
TB statistics in 2012 (Population in Mie 1,840,367)	
Among newly registered : (Japan)	
Foreign borns	25 9.9% (5.0%)
TB cases with homeless history	1 0.4% (1.6%)
Male aged 35-59, without job and receiving public assistance	3 11.5% (10.8%)

Trends	'08	'09	'10	'11	'12
Notified cases	325	312	293	280	252
Rate per 100,000 population	17.3	16.7	15.8	15.2	13.7
Sputum smear +ve. pul.cases	144	131	111	99	90
Rate per 100,000 population	7.7	7.0	6.0	5.4	4.9
Latent Tuberculosis Infection	71	52	33	90	72
Rate per 100,000 population	3.8	2.8	1.8	4.9	3.9

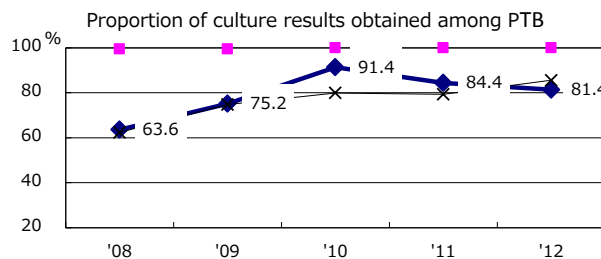
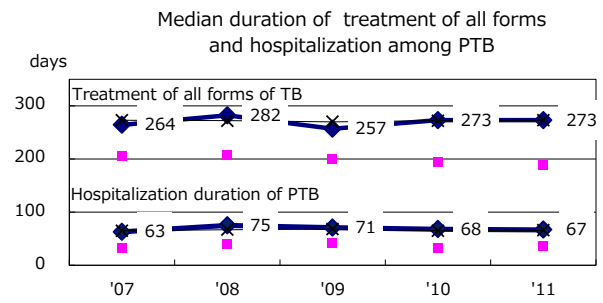
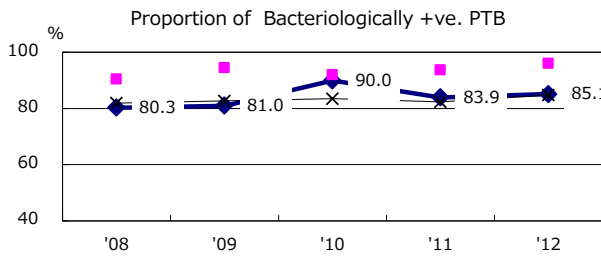
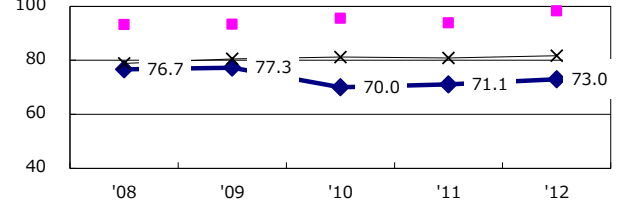
Trends of TB notification rates, all forms and smear +ve.PTB



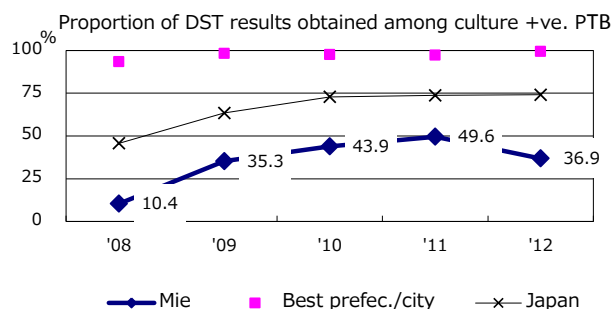
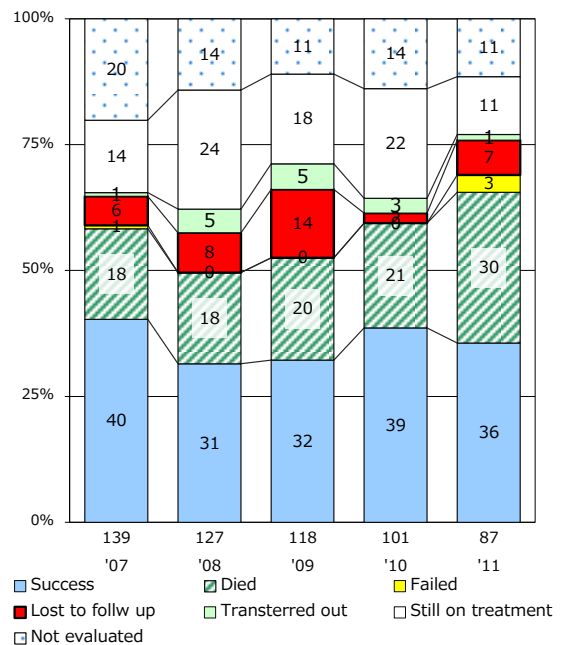
Proportion of cases with total diagnosis delay (> 3 mths) among symptomatic PTB



Proportion of TX with HRZ-E/S among all forms of TB cases aged under 80 yrs †



Treatment outcomes of new sputum smear +ve.TB



PTB : pumonary TB

† Excluding unknown delay(%)	'08	'09	'10	'11	'12
	29.0	26.7	33.1	21.2	19.1

‡ Excluding unknown Tx(%)	'08	'09	'10	'11	'12
	1.8	1.5	1.8	2.9	3.3