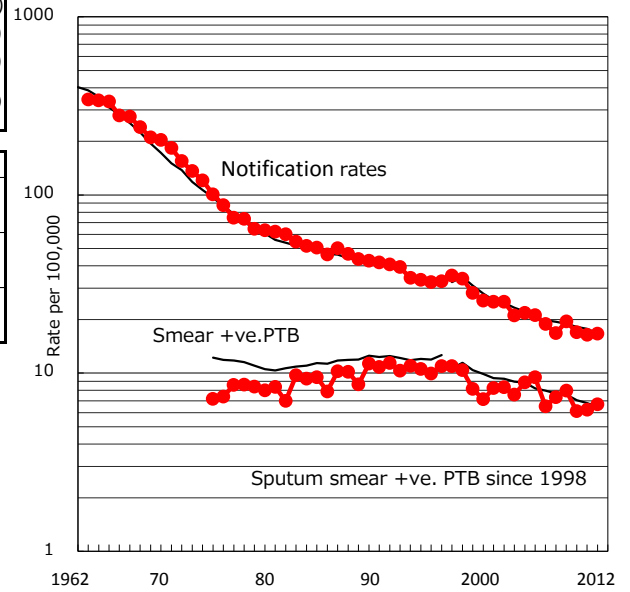


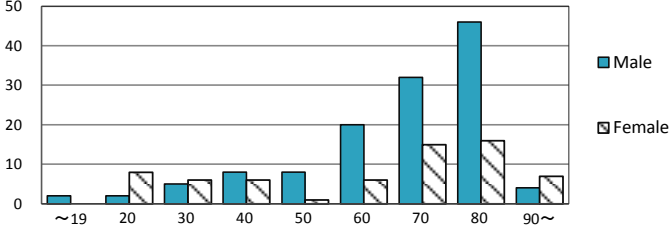
TB statistics in 2012 ( Population in Kyoto 1,152,416 )	
Among newly registered : (Japan)	
Foreign borns	6 3.1% (5.0%)
TB cases with homeless history	0 0.0% (1.6%)
Male aged 35-59,without job and receiveing public assistance	2 9.5% (10.8%)

Trends	'08	'09	'10	'11	'12
Notified cases	195	225	197	190	192
Rate per 100,000 population	16.8	19.5	17.0	16.4	16.7
Sputum smear +ve. pul.cases	85	92	71	72	77
Rate per 100,000 population	7.3	8.0	6.1	6.2	6.7
Latent Tuberculosis Infection	41	40	28	62	103
Rate per 100,000 population	3.5	3.5	2.4	5.4	8.9

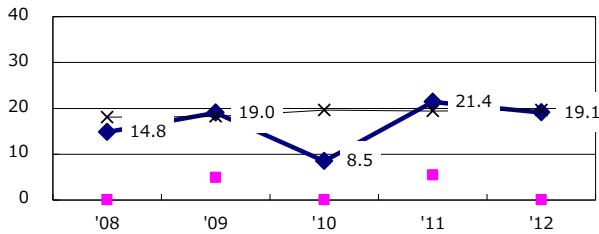
Trends of TB notification rates, all forms and smear +ve.PTB



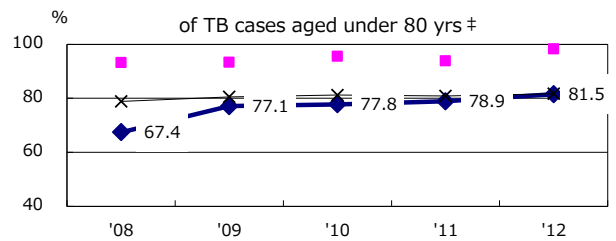
Age-sex composition of notified cases, 2012



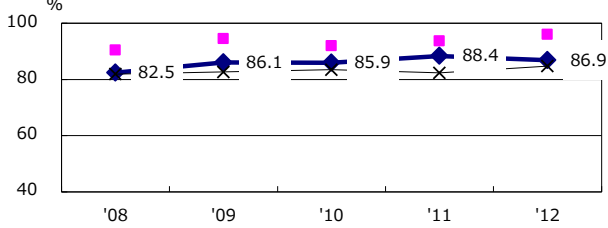
Proportion of cases with total diagnosis delay(> 3 mths) among symptomatic PTB



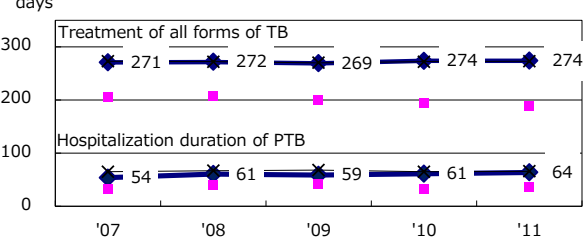
Proportion of TX with HRZ-E/S among all forms of TB cases aged under 80 yrs †



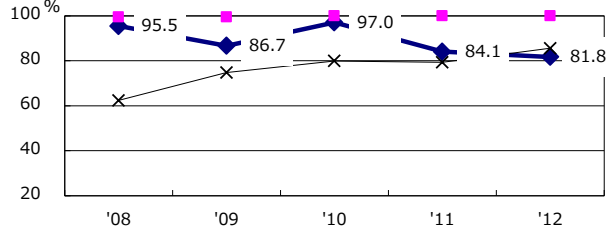
Proportion of Bacteriologically +ve. PTB



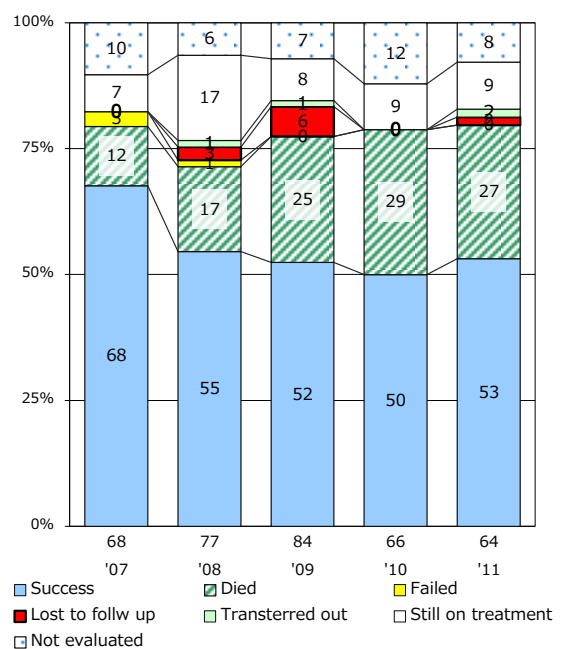
Median duration of treatment of all forms and hospitalization among PTB



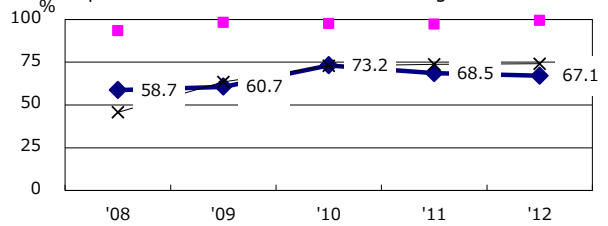
Proportion of culture results obtained among PTB



Treatment outcomes of new sputum smear +ve.TB



Proportion of DST results obtained among culture +ve. PTB



PTB : pumonyary TB

† Excluding unknown delay(%)	'08	'09	'10	'11	'12
	6.1	13.9	39.8	47.2	35.8

‡ Excluding unknown Tx(%)	'08	'09	'10	'11	'12
	0.8	2.0	3.1	2.7	0.0