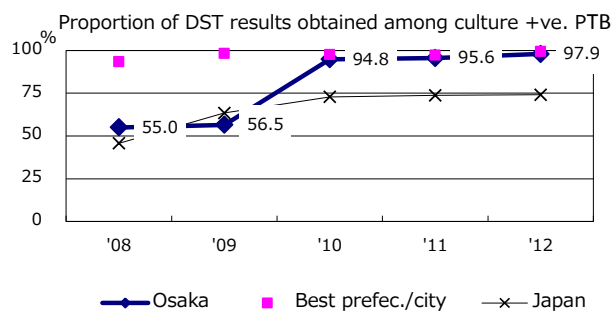
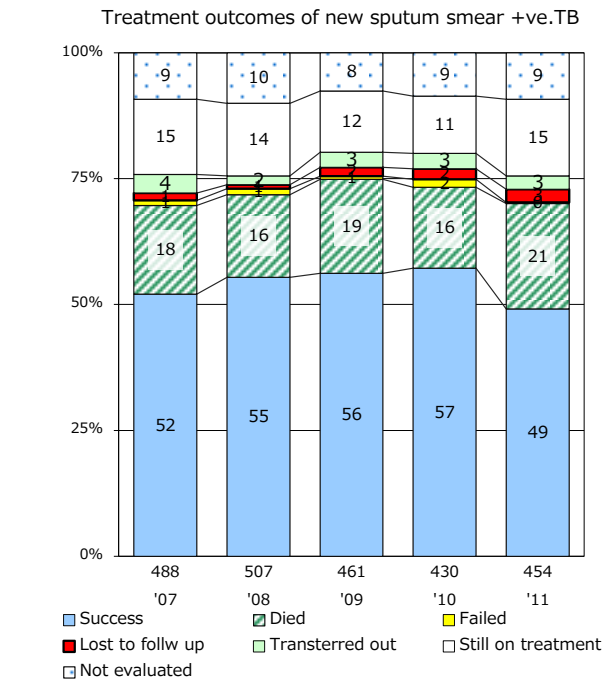
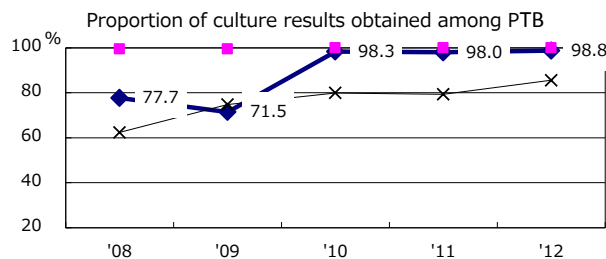
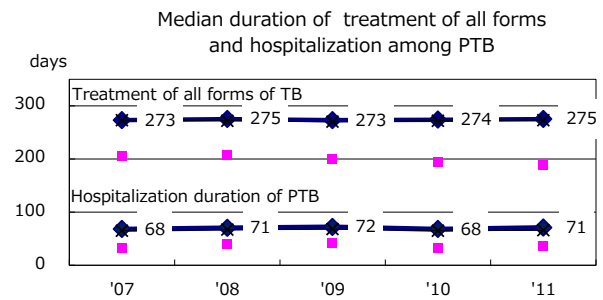
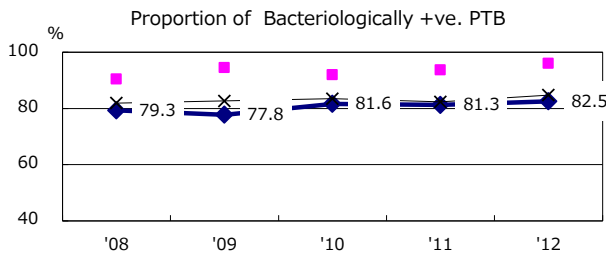
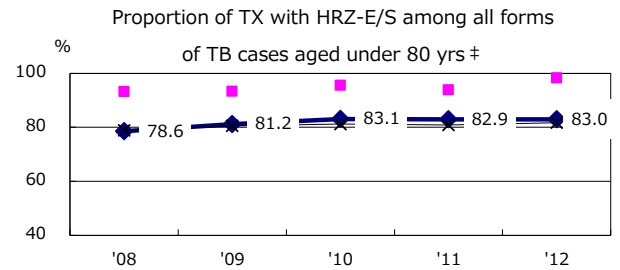
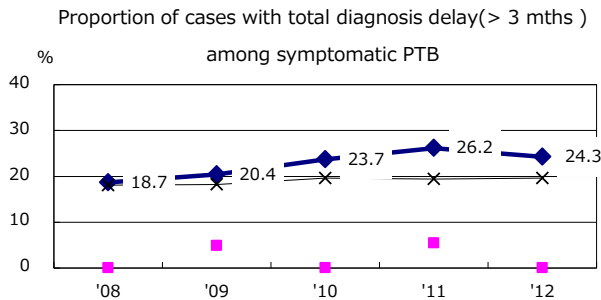
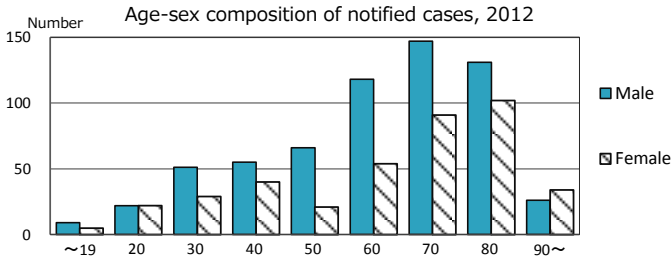
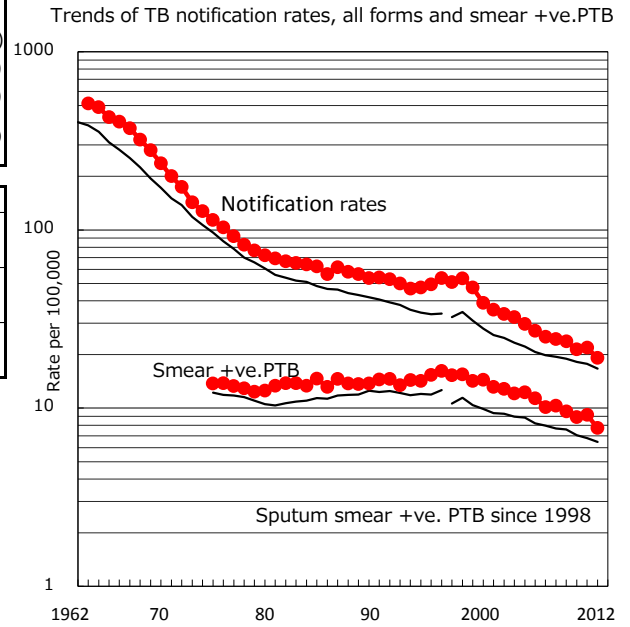


TB statistics in 2012 (Population in Osaka 5,336,117)	
Among newly registered : (Japan)	
Foreign borns	19 1.9% (5.0%)
TB cases with homeless history	1 0.1% (1.6%)
Male aged 35-59,without job and receiveing public assistance	23 13.4% (10.8%)

Trends	'08	'09	'10	'11	'12
Notified cases	1,300	1,255	1,143	1,170	1,023
Rate per 100,000 population	24.4	23.7	21.3	21.9	19.2
Sputum smear +ve. pul.cases	549	508	477	491	413
Rate per 100,000 population	10.3	9.6	8.9	9.2	7.7
Latent Tuberculosis Infection	214	222	180	394	373
Rate per 100,000 population	4.0	4.2	3.4	7.4	7.0



PTB : pumonary TB

† Excluding unknown delay(%)	'08	'09	'10	'11	'12
	24.9	33.0	26.2	17.1	26.6

‡ Excluding unknown Tx(%)	'08	'09	'10	'11	'12
	7.9	4.8	1.2	0.9	1.1