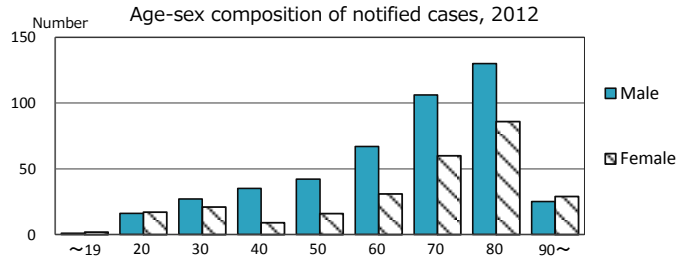
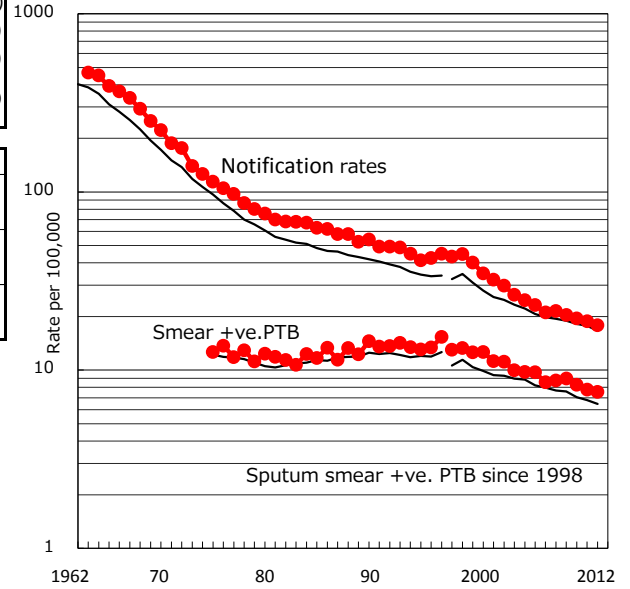


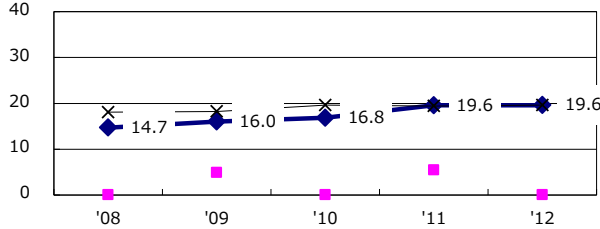
TB statistics in 2012 ( Population in Hyogo 4,028,635 )	
Among newly registered : (Japan)	
Foreign borns	9 1.3% (5.0%)
TB cases with homeless history	5 0.7% (1.6%)
Male aged 35-59, without job and receiving public assistance	4 3.8% (10.8%)

Trends	'08	'09	'10	'11	'12
Notified cases	869	823	787	760	720
Rate per 100,000 population	21.4	20.3	19.5	18.8	17.9
Sputum smear +ve. pul.cases	354	363	335	314	304
Rate per 100,000 population	8.7	9.0	8.3	7.8	7.5
Latent Tuberculosis Infection	108	101	184	299	270
Rate per 100,000 population	2.7	2.5	4.5	7.4	6.7

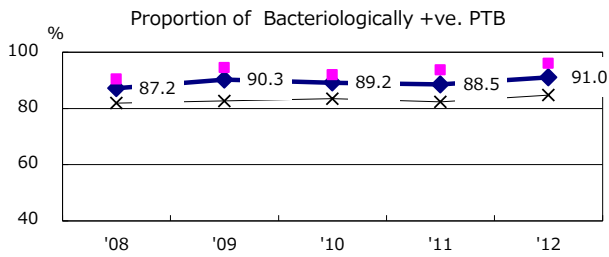
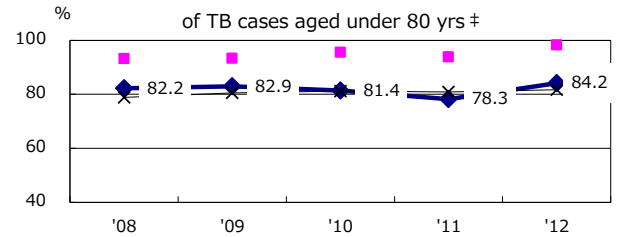
Trends of TB notification rates, all forms and smear +ve.PTB



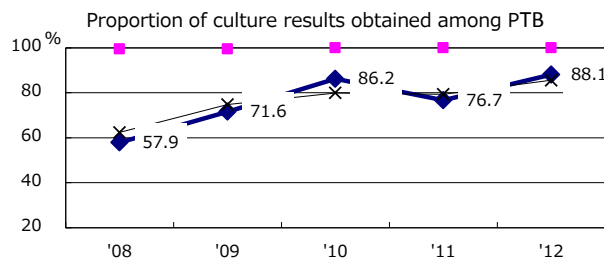
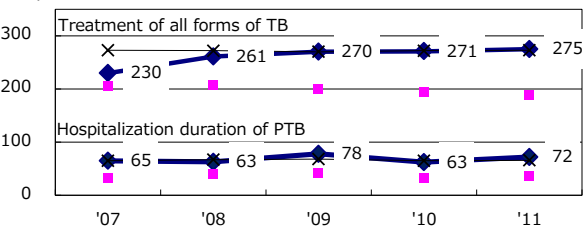
Proportion of cases with total diagnosis delay (> 3 mths) among symptomatic PTB



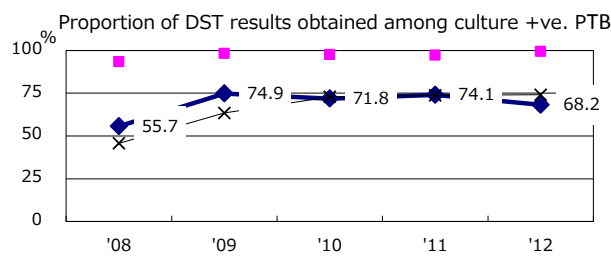
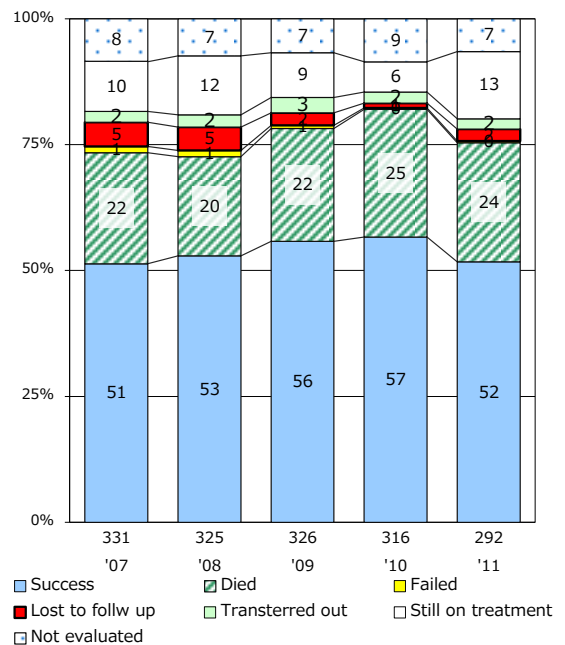
Proportion of TX with HRZ-E/S among all forms of TB cases aged under 80 yrs †



Median duration of treatment of all forms and hospitalization among PTB



Treatment outcomes of new sputum smear +ve.TB



PTB : pumonary TB

† Excluding unknown delay(%)	'08	'09	'10	'11	'12
	23.9	38.5	38.1	51.7	46.8

‡ Excluding unknown Tx(%)	'08	'09	'10	'11	'12
	0.8	0.9	3.4	3.8	1.8