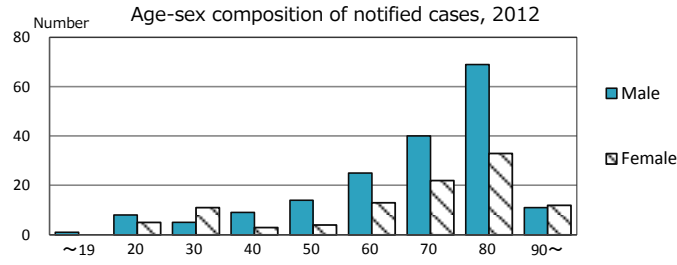
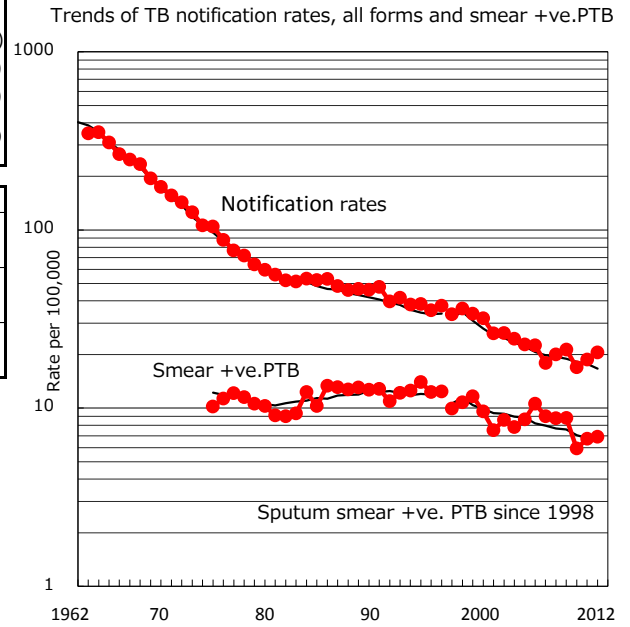
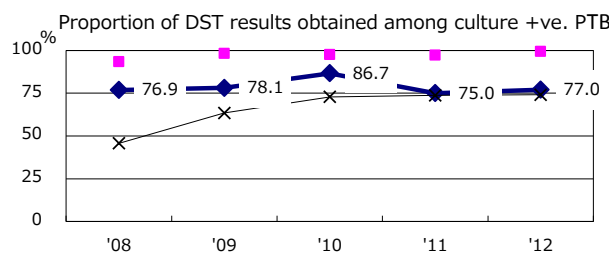
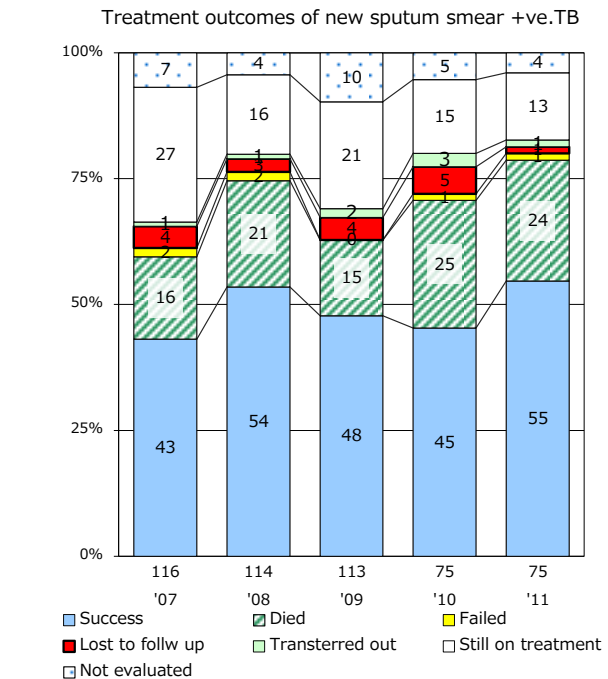
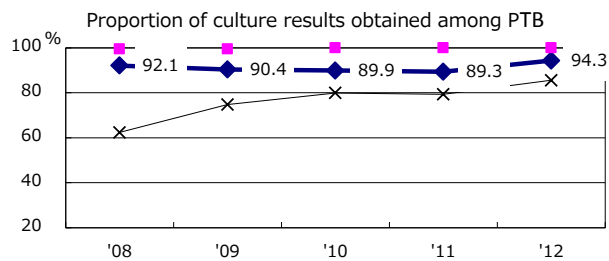
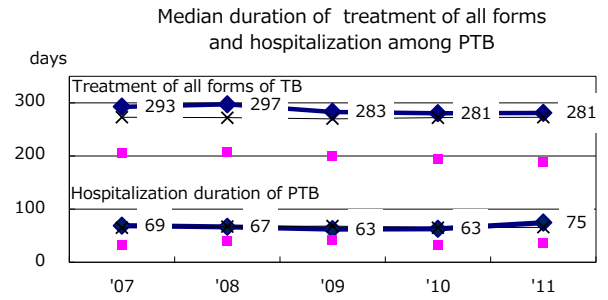
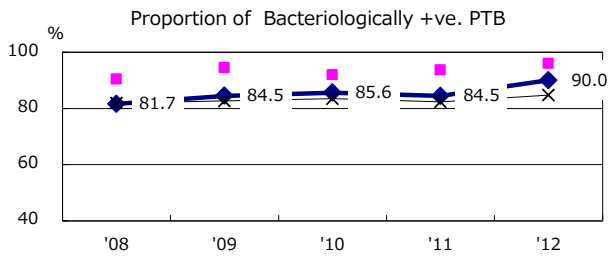
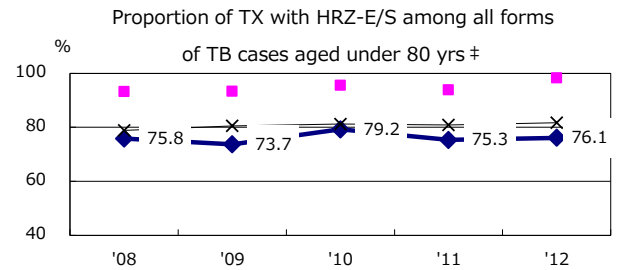
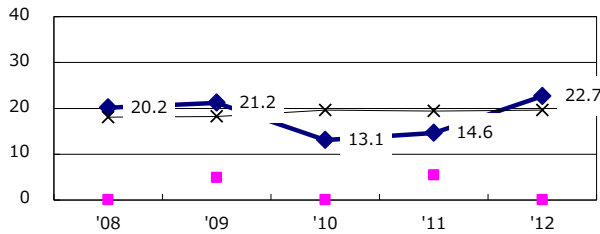


TB statistics in 2012 ( Population in Nara		1,389,753 )
Among newly registered :		
(Japan)		
Foreign borns	3	1.1% (5.0%)
TB cases with homeless history	1	0.4% (1.6%)
Male aged 35-59,without job and receiveing public assistance	1	3.6% (10.8%)

Trends	'08	'09	'10	'11	'12
Notified cases	281	298	237	261	285
Rate per 100,000 population	20.0	21.3	16.9	18.7	20.5
Sputum smear +ve. pul.cases	123	123	83	94	96
Rate per 100,000 population	8.8	8.8	5.9	6.7	6.9
Latent Tuberculosis Infection	68	57	42	93	121
Rate per 100,000 population	4.8	4.1	3.0	6.7	8.7



Proportion of cases with total diagnosis delay(> 3 mths ) among symptomatic PTB



PTB : pumonary TB

† Excluding unknown delay(%)	'08	'09	'10	'11	'12
	36.3	5.7	12.2	21.2	15.3

‡ Excluding unknown Tx(%)	'08	'09	'10	'11	'12
	1.0	1.4	2.5	3.7	3.1