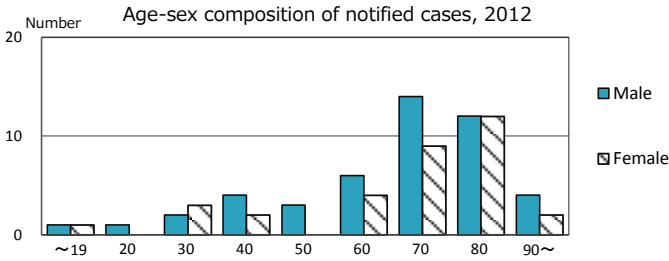
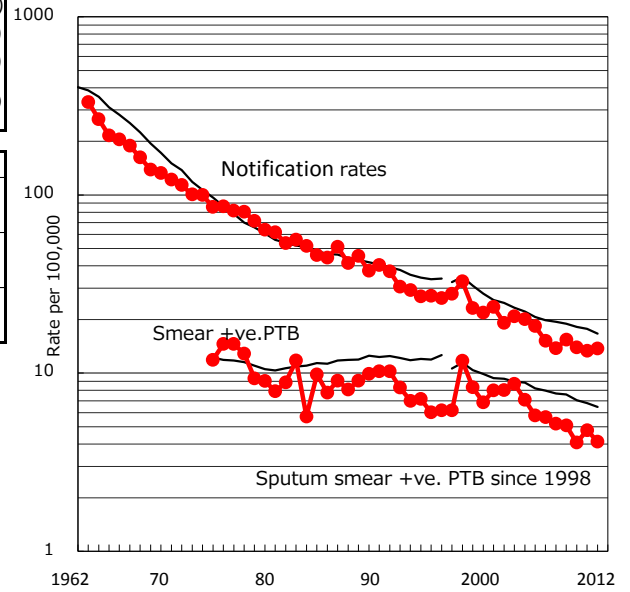


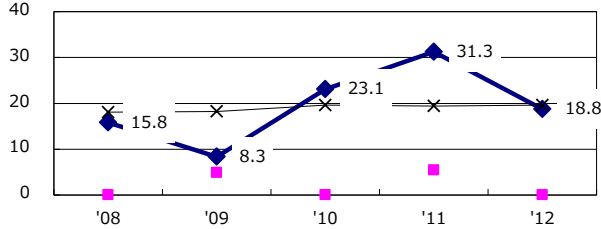
TB statistics in 2012 (Population in Tottori 581,784)	
Among newly registered : (Japan)	
Foreign borns	0 0.0% (5.0%)
TB cases with homeless history	0 0.0% (1.6%)
Male aged 35-59,without job and receiveing public assistance	2 22.2% (10.8%)

Trends	'08	'09	'10	'11	'12
Notified cases	82	91	82	78	80
Rate per 100,000 population	13.8	15.4	13.9	13.3	13.8
Sputum smear +ve. pul.cases	31	30	24	28	24
Rate per 100,000 population	5.2	5.1	4.1	4.8	4.1
Latent Tuberculosis Infection	19	20	14	58	58
Rate per 100,000 population	3.2	3.4	2.4	9.9	10.0

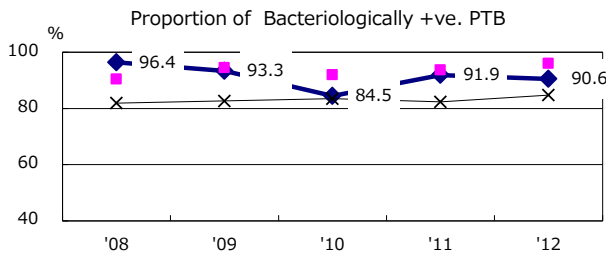
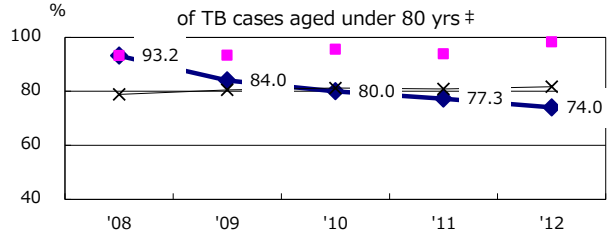
Trends of TB notification rates, all forms and smear +ve.PTB



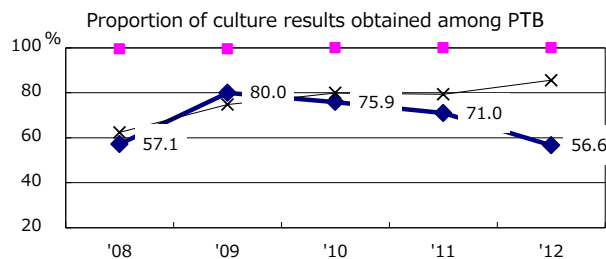
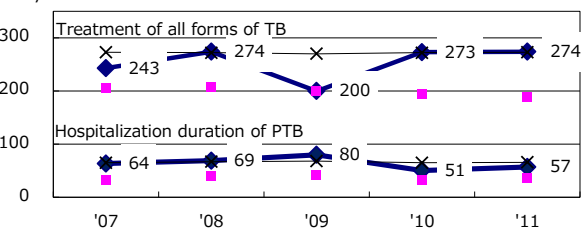
Proportion of cases with total diagnosis delay(> 3 mths) among symptomatic PTB



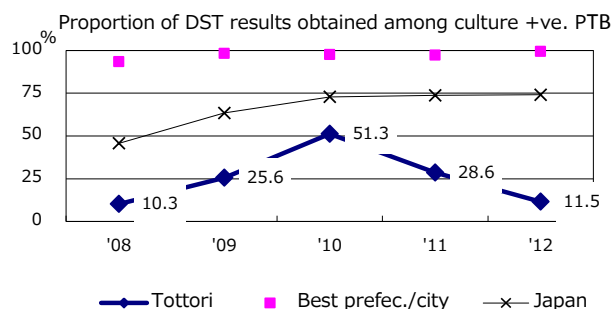
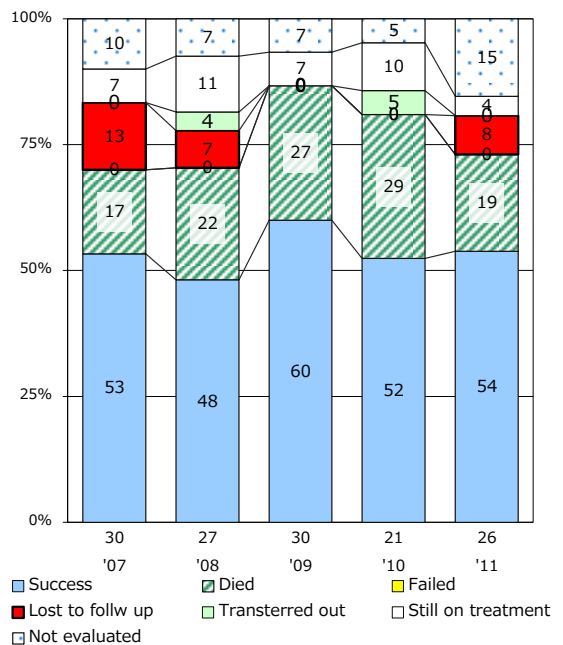
Proportion of TX with HRZ-E/S among all forms of TB cases aged under 80 yrs †



Median duration of treatment of all forms and hospitalization among PTB



Treatment outcomes of new sputum smear +ve.TB



PTB : pumonary TB

† Excluding unknown delay(%)	'08	'09	'10	'11	'12
	52.5	63.6	68.3	60.0	51.5

‡ Excluding unknown Tx(%)	'08	'09	'10	'11	'12
	6.4	2.0	1.8	4.3	0.0