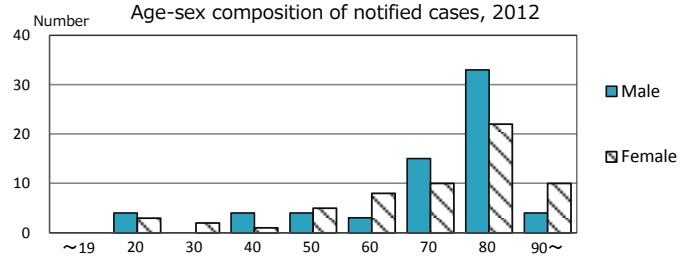
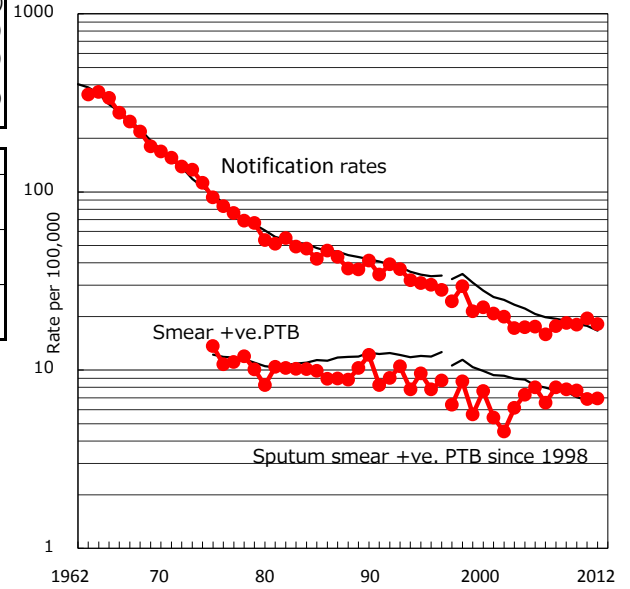


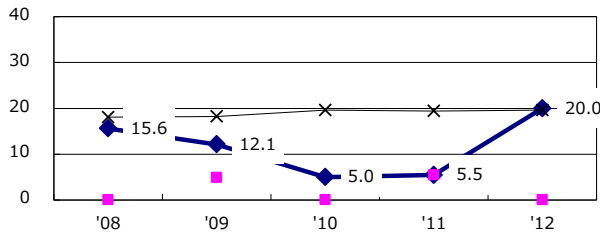
TB statistics in 2012 ( Population in Shimane 706,822 )	
Among newly registered : (Japan)	
Foreign borns	3 2.3% (5.0%)
TB cases with homeless history	0 0.0% (1.6%)
Male aged 35-59, without job and receiving public assistance	0 0.0% (10.8%)

Trends	'08	'09	'10	'11	'12
Notified cases	128	132	129	139	128
Rate per 100,000 population	17.7	18.4	18.0	19.5	18.1
Sputum smear +ve. pul.cases	58	56	55	49	49
Rate per 100,000 population	8.0	7.8	7.7	6.9	6.9
Latent Tuberculosis Infection	29	32	30	129	115
Rate per 100,000 population	4.0	4.5	4.2	18.1	16.3

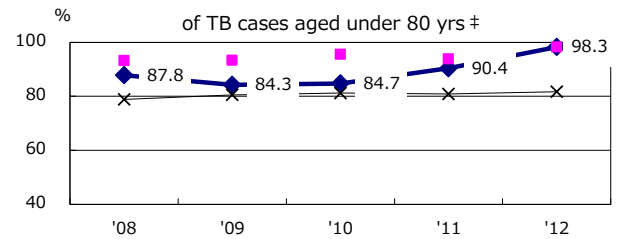
Trends of TB notification rates, all forms and smear +ve.PTB



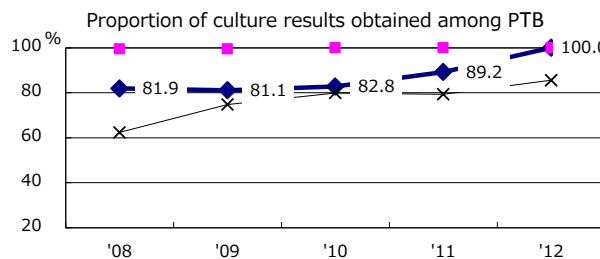
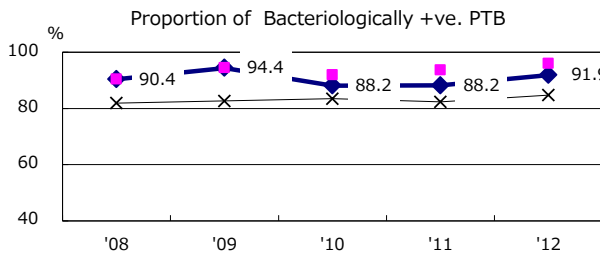
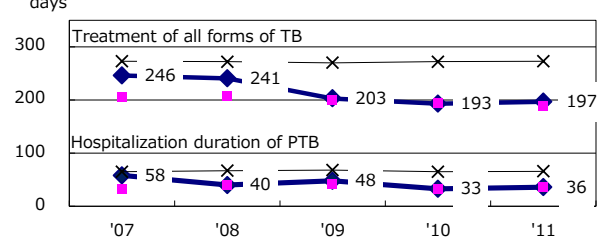
Proportion of cases with total diagnosis delay (> 3 mths) among symptomatic PTB



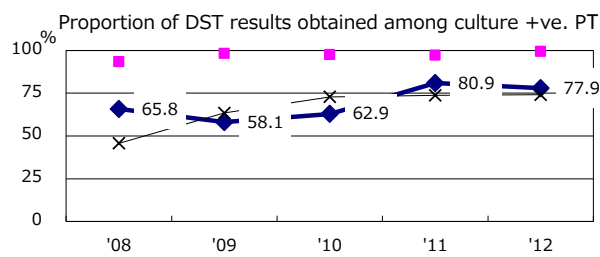
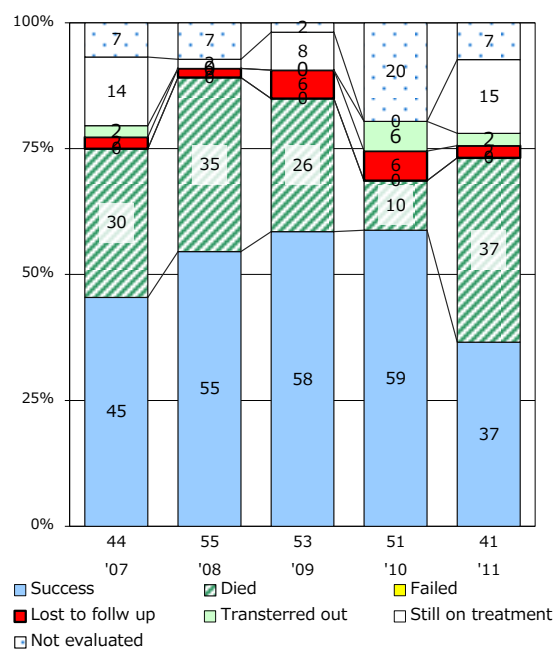
Proportion of TX with HRZ-E/S among all forms of TB cases aged under 80 yrs †



Median duration of treatment of all forms and hospitalization among PTB



Treatment outcomes of new sputum smear +ve.TB



PTB : pumonyary TB

† Excluding unknown delay(%)	'08	'09	'10	'11	'12
	53.6	53.5	48.1	26.7	54.5

‡ Excluding unknown Tx(%)	'08	'09	'10	'11	'12
	0.0	5.4	2.7	0.0	1.7