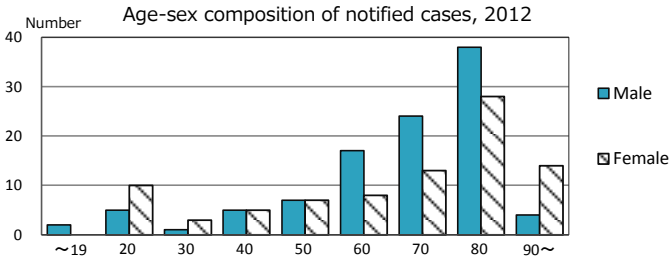
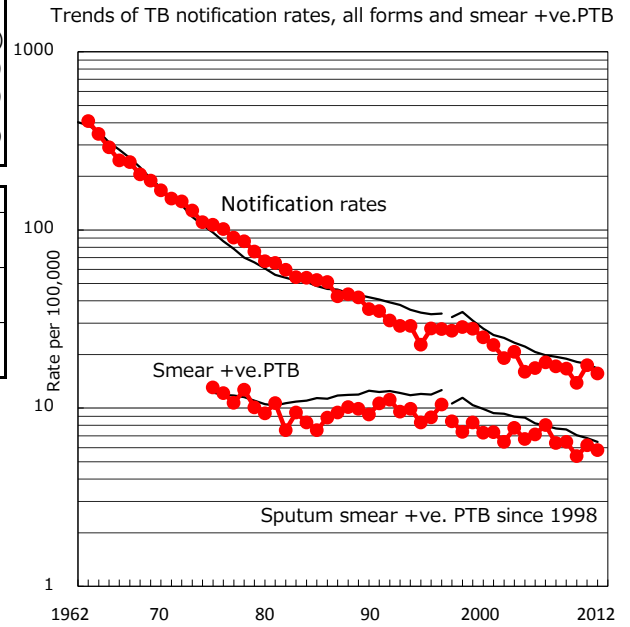
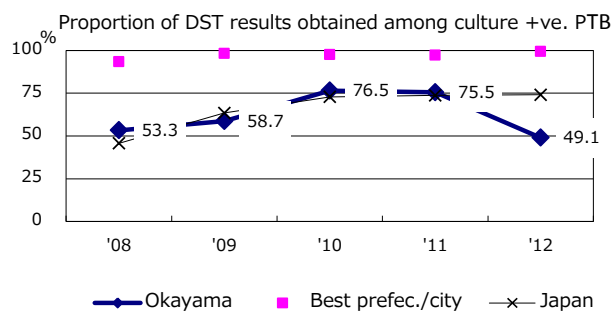
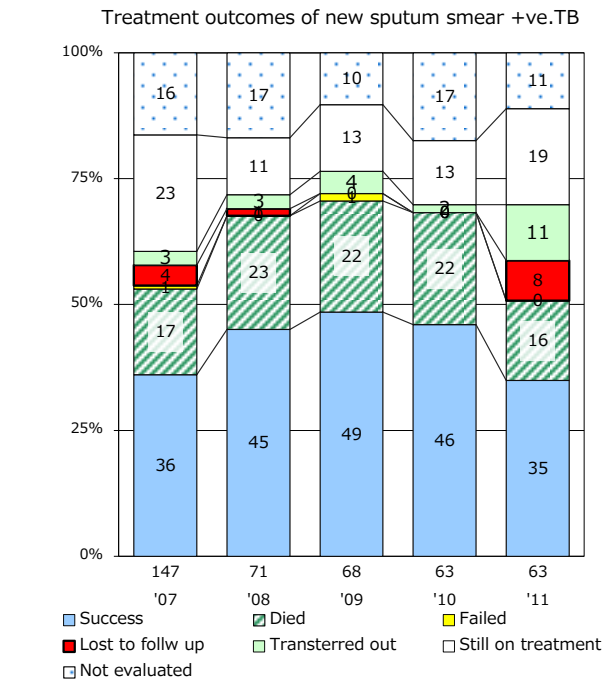
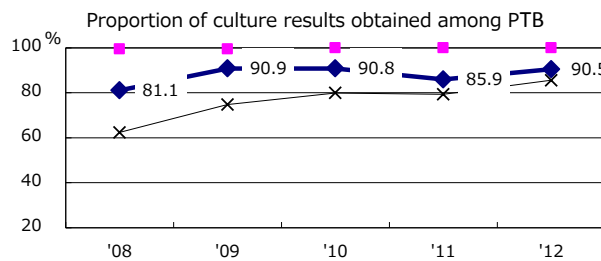
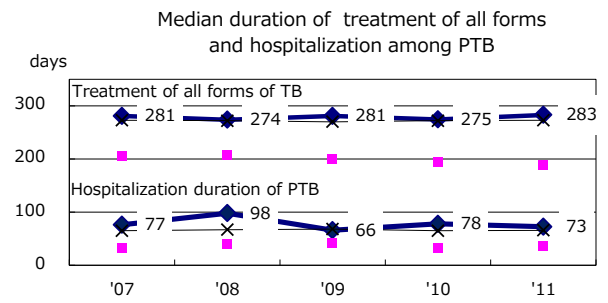
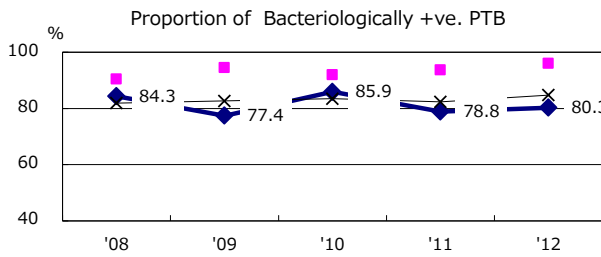
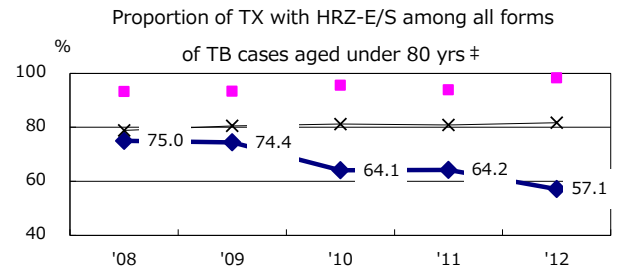
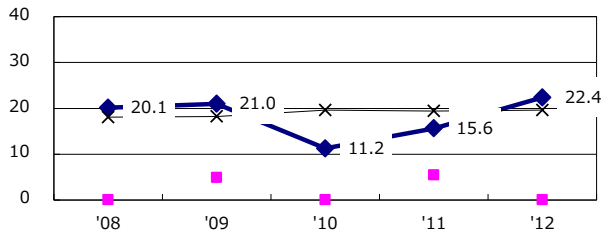


TB statistics in 2012 (Population in Okayama 1,222,917)	
Among newly registered : (Japan)	
Foreign borns	8 4.2% (5.0%)
TB cases with homeless history	0 0.0% (1.6%)
Male aged 35-59,without job and receiveing public assistance	1 7.7% (10.8%)

Trends	'08	'09	'10	'11	'12
Notified cases	334	206	172	214	191
Rate per 100,000 population	17.1	16.6	13.8	17.4	15.6
Sputum smear +ve. pul.cases	124	80	67	76	71
Rate per 100,000 population	6.4	6.5	5.4	6.2	5.8
Latent Tuberculosis Infection	48	49	24	105	112
Rate per 100,000 population	2.5	4.0	1.9	8.5	9.2



Proportion of cases with total diagnosis delay(> 3 mths) among symptomatic PTB



PTB : pumonyary TB

† Excluding unknown delay(%)	'08	'09	'10	'11	'12
	23.0	11.8	22.6	18.6	30.9

‡ Excluding unknown Tx(%)	'08	'09	'10	'11	'12
	1.8	1.6	2.1	3.2	1.9