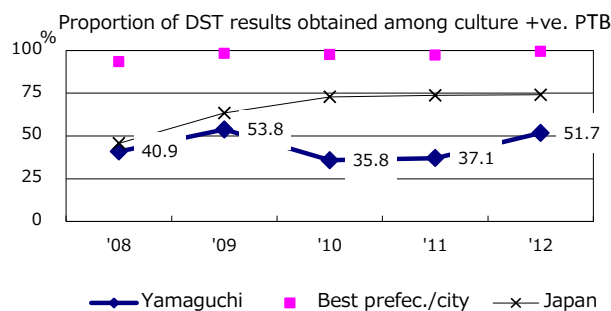
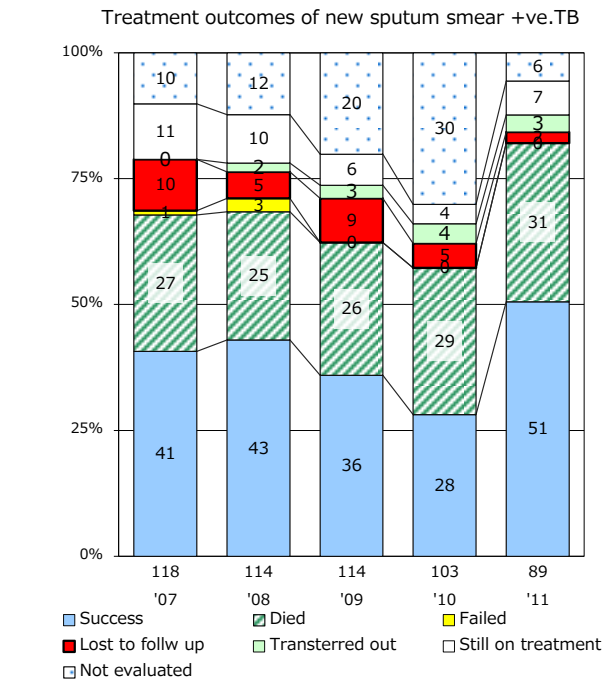
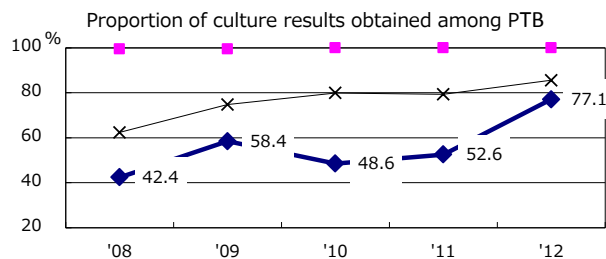
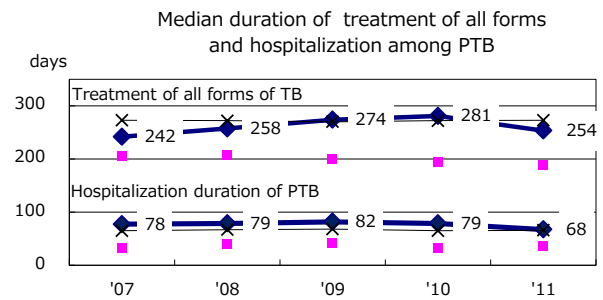
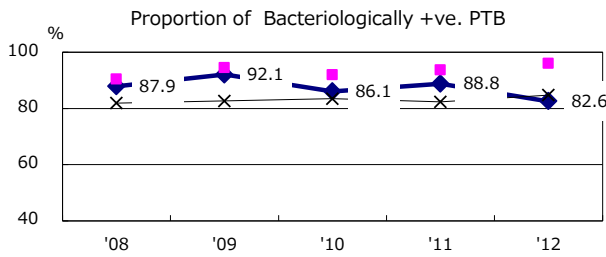
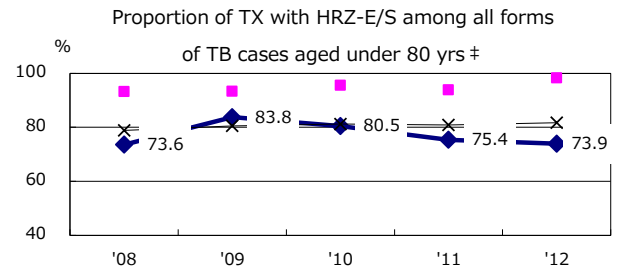
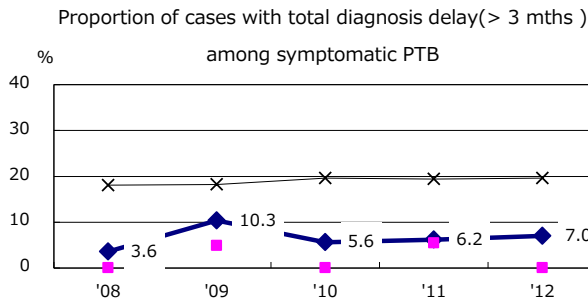
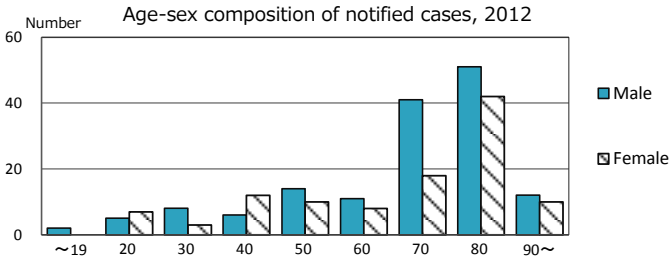
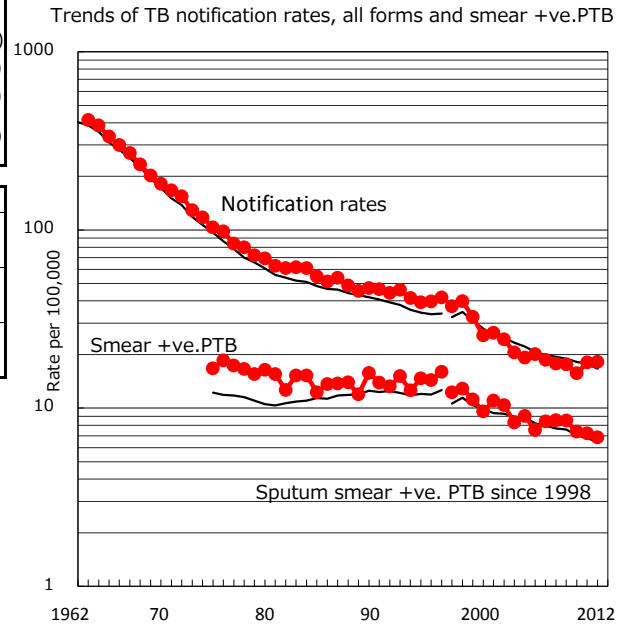


TB statistics in 2012 (Population in Yamaguchi 1,430,616)	
Among newly registered : (Japan)	
Foreign borns	8 3.1% (5.0%)
TB cases with homeless history	1 0.4% (1.6%)
Male aged 35-59,without job and receiveing public assistance	1 3.6% (10.8%)

Trends	'08	'09	'10	'11	'12
Notified cases	260	256	228	260	260
Rate per 100,000 population	17.8	17.6	15.7	18.0	18.2
Sputum smear +ve. pul.cases	125	124	107	104	98
Rate per 100,000 population	8.5	8.5	7.4	7.2	6.9
Latent Tuberculosis Infection	28	24	12	74	103
Rate per 100,000 population	1.9	1.6	0.8	5.1	7.2



PTB : pumonary TB

† Excluding unknown delay(%)	'08	'09	'10	'11	'12
	42.1	48.2	38.6	55.8	42.7

‡ Excluding unknown Tx(%)	'08	'09	'10	'11	'12
	3.6	3.1	2.4	6.3	2.1