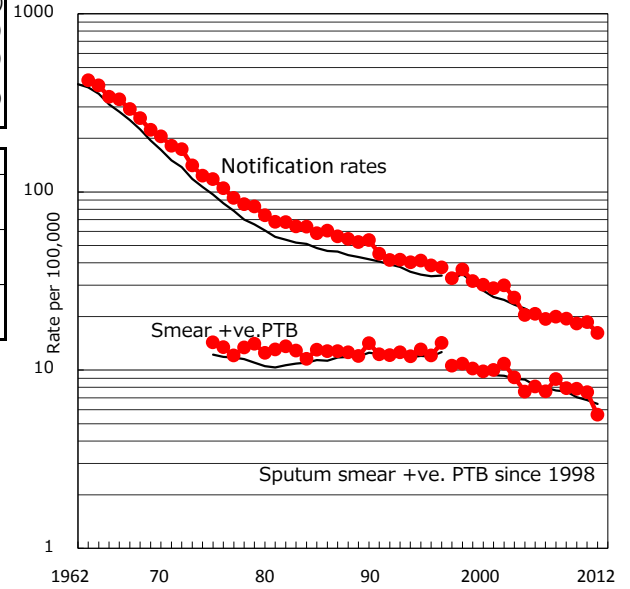


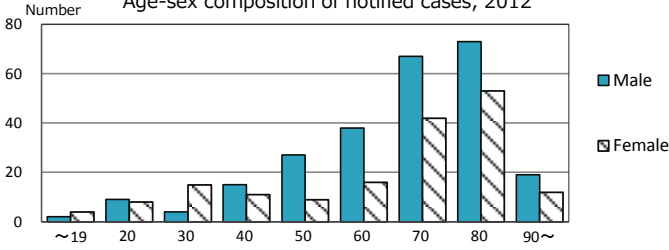
TB statistics in 2012 (Population in Fukuoka 2,621,210)	
Among newly registered : (Japan)	
Foreign borns	17 4.0% (5.0%)
TB cases with homeless history	2 0.5% (1.6%)
Male aged 35-59,without job and receiveing public assistance	2 4.3% (10.8%)

Trends	'08	'09	'10	'11	'12
Notified cases	525	508	481	488	424
Rate per 100,000 population	19.9	19.4	18.3	18.6	16.2
Sputum smear +ve. pul.cases	234	207	207	197	147
Rate per 100,000 population	8.9	7.9	7.9	7.5	5.6
Latent Tuberculosis Infection	46	48	68	113	194
Rate per 100,000 population	1.7	1.8	2.6	4.3	7.4

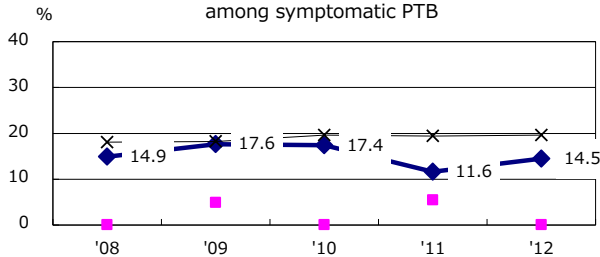
Trends of TB notification rates, all forms and smear +ve.PTB



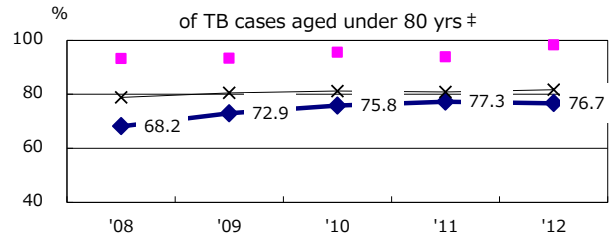
Age-sex composition of notified cases, 2012



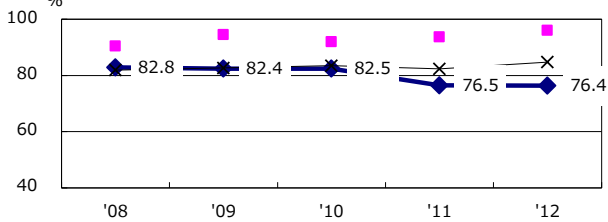
Proportion of cases with total diagnosis delay(> 3 mths) among symptomatic PTB



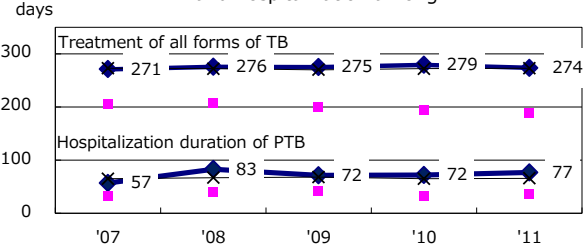
Proportion of TX with HRZ-E/S among all forms of TB cases aged under 80 yrs †



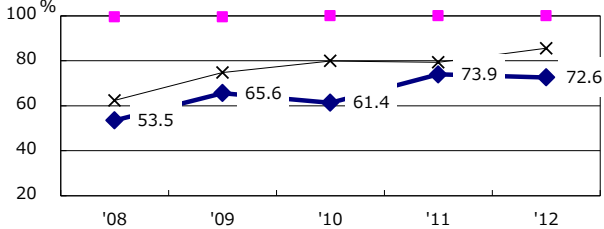
Proportion of Bacteriologically +ve. PTB



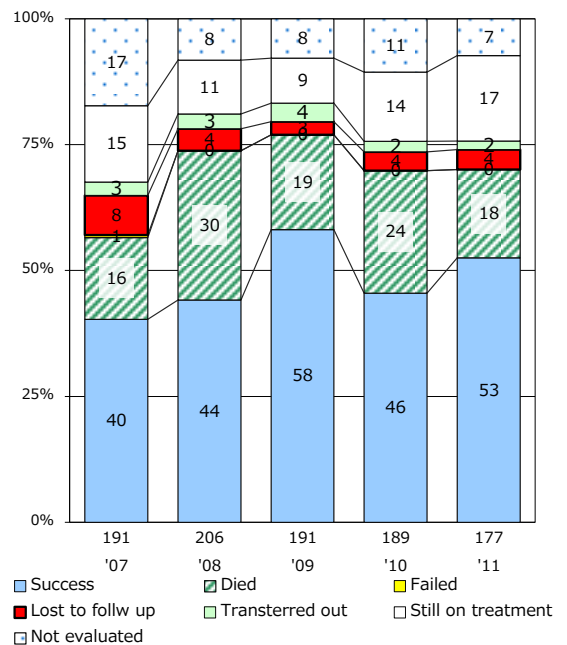
Median duration of treatment of all forms and hospitalization among PTB



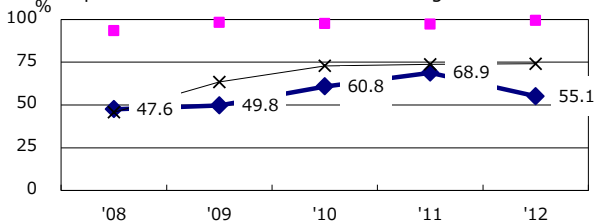
Proportion of culture results obtained among PTB



Treatment outcomes of new sputum smear +ve.TB



Proportion of DST results obtained among culture +ve. PTB



PTB : pumonyary TB

† Excluding unknown delay(%)	'08	'09	'10	'11	'12
	36.1	27.3	31.3	18.5	20.1

‡ Excluding unknown Tx(%)	'08	'09	'10	'11	'12
	8.3	0.9	3.2	1.9	1.9