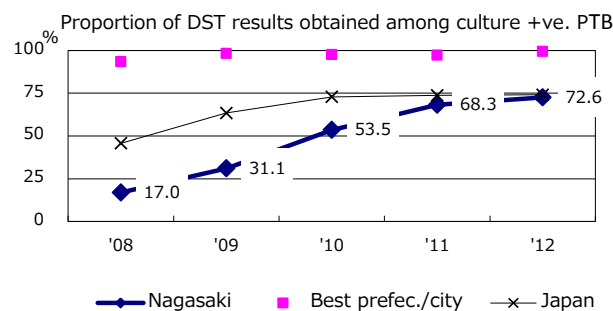
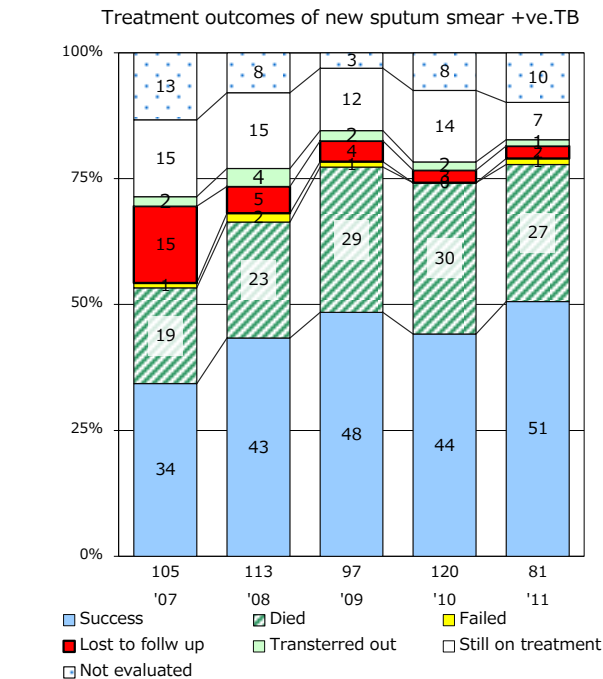
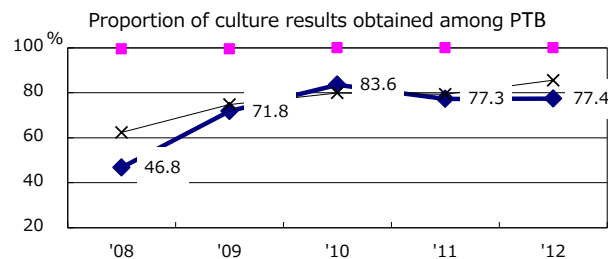
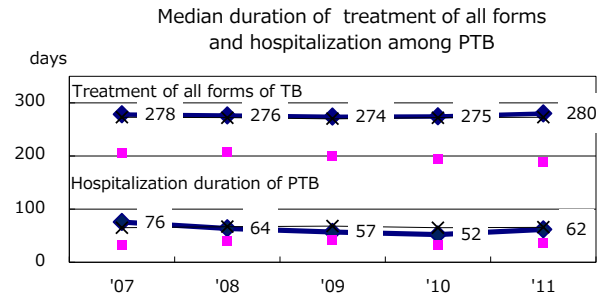
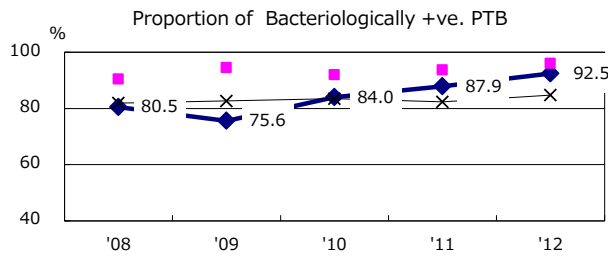
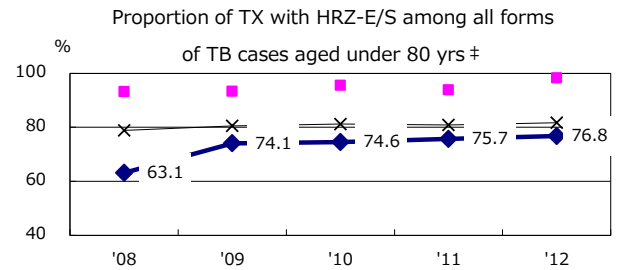
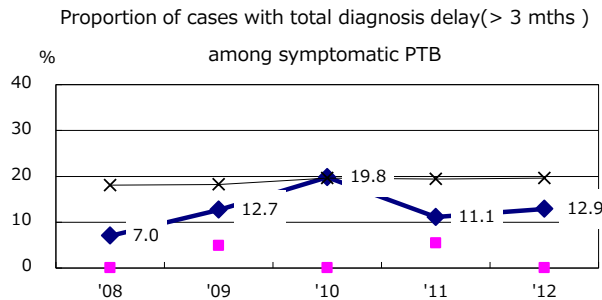
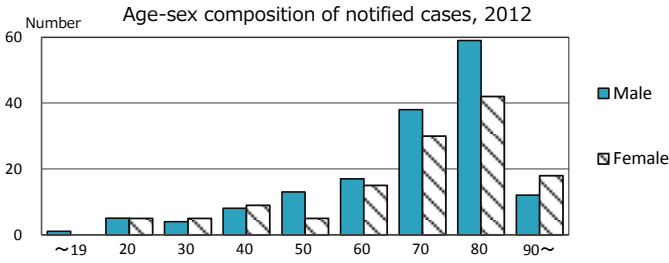
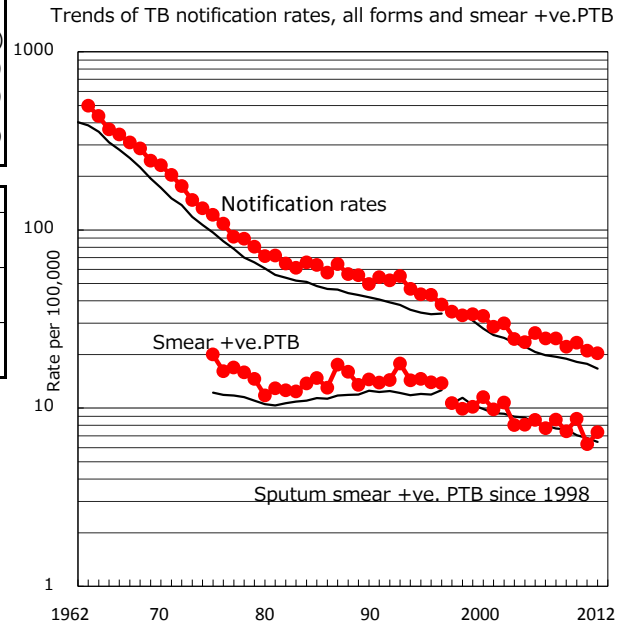


TB statistics in 2012 (Population in Nagasaki 1,407,826)	
Among newly registered :	(Japan)
Foreign borns	5 1.7% (5.0%)
TB cases with homeless history	0 0.0% (1.6%)
Male aged 35-59,without job and receiveing public assistance	1 4.0% (10.8%)

Trends	'08	'09	'10	'11	'12
Notified cases	354	316	332	297	286
Rate per 100,000 population	24.6	22.1	23.3	21.0	20.3
Sputum smear +ve. pul.cases	124	106	124	89	103
Rate per 100,000 population	8.6	7.4	8.7	6.3	7.3
Latent Tuberculosis Infection	30	30	33	91	73
Rate per 100,000 population	2.1	2.1	2.3	6.4	5.2



PTB : pumonyary TB

† Excluding unknown delay(%)	'08	'09	'10	'11	'12
	30.4	31.9	49.2	50.6	42.9

‡ Excluding unknown Tx(%)	'08	'09	'10	'11	'12
	0.5	1.0	1.1	0.7	0.0