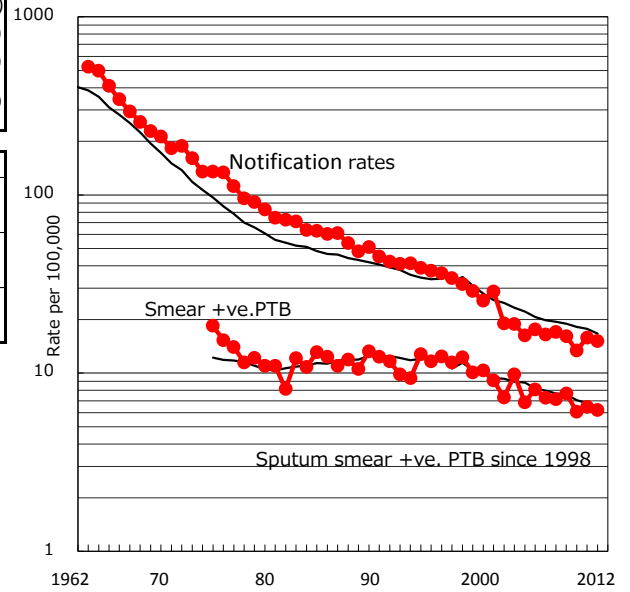


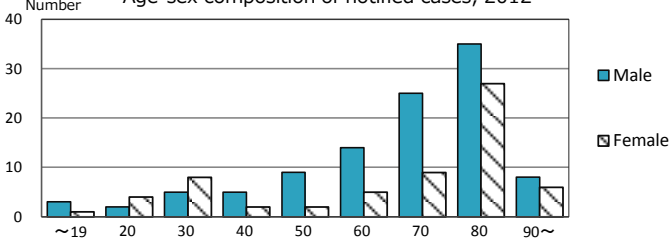
TB statistics in 2012 (Population in Miyazaki 1,126,148)	
Among newly registered :	(Japan)
Foreign borns	6 3.5% (5.0%)
TB cases with homeless history	3 1.8% (1.6%)
Male aged 35-59, without job and receiving public assistance	2 10.5% (10.8%)

Trends	'08	'09	'10	'11	'12
Notified cases	193	182	152	179	170
Rate per 100,000 population	17.0	16.1	13.4	15.8	15.1
Sputum smear +ve. pul.cases	81	87	69	73	70
Rate per 100,000 population	7.1	7.7	6.1	6.5	6.2
Latent Tuberculosis Infection	74	34	41	59	73
Rate per 100,000 population	6.5	3.0	3.6	5.2	6.5

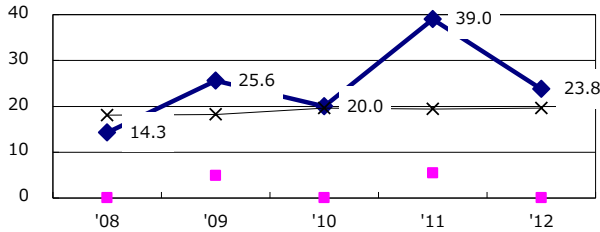
Trends of TB notification rates, all forms and smear +ve.PTB



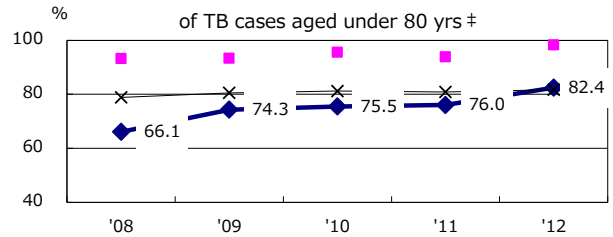
Age-sex composition of notified cases, 2012



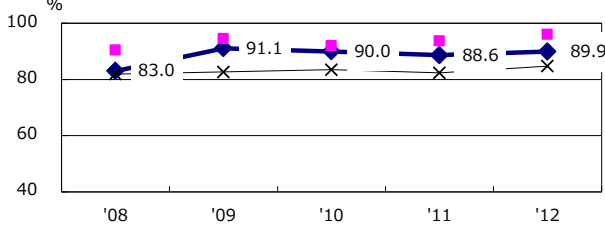
Proportion of cases with total diagnosis delay (> 3 mths) among symptomatic PTB



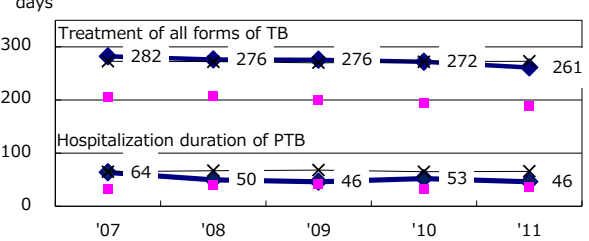
Proportion of TX with HRZ-E/S among all forms of TB cases aged under 80 yrs †



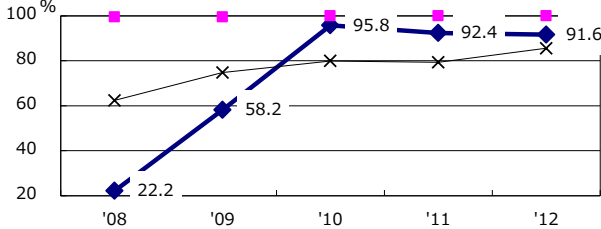
Proportion of Bacteriologically +ve. PTB



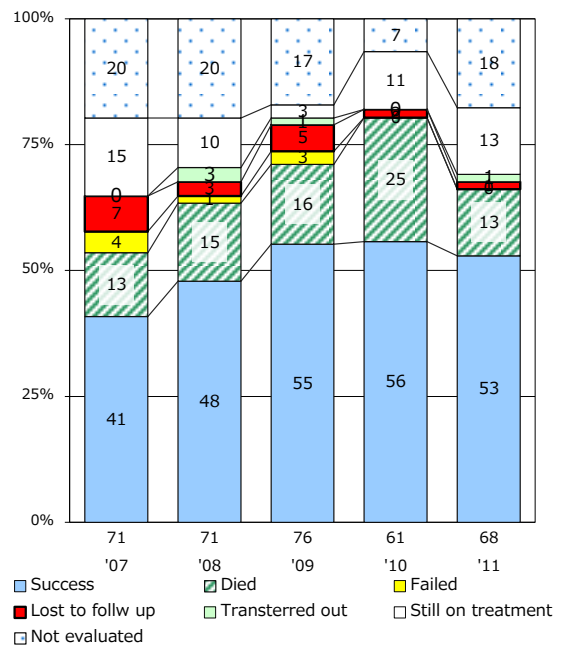
Median duration of treatment of all forms and hospitalization among PTB



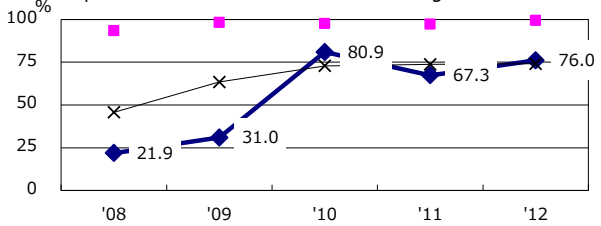
Proportion of culture results obtained among PTB



Treatment outcomes of new sputum smear +ve.TB



Proportion of DST results obtained among culture +ve. PTB



PTB : pumonyary TB

† Excluding unknown delay(%)	'08	'09	'10	'11	'12
	62.9	58.3	62.0	60.6	20.8

‡ Excluding unknown Tx(%)	'08	'09	'10	'11	'12
	11.1	1.8	3.0	1.0	3.2