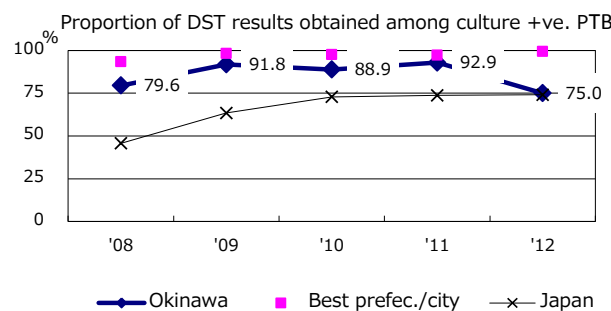
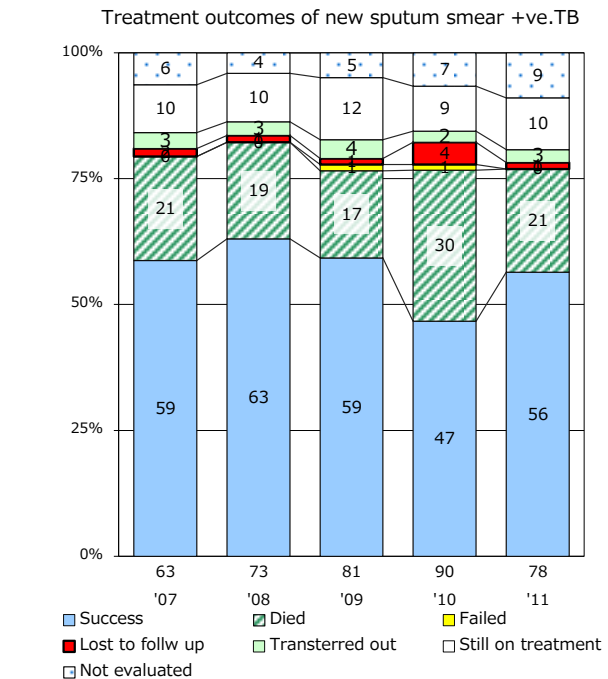
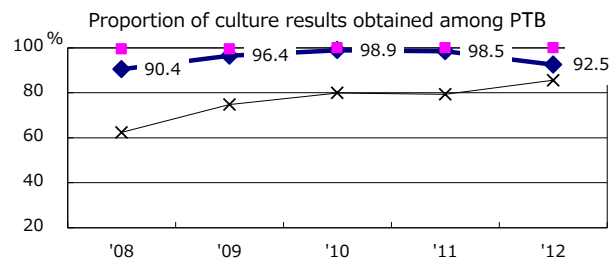
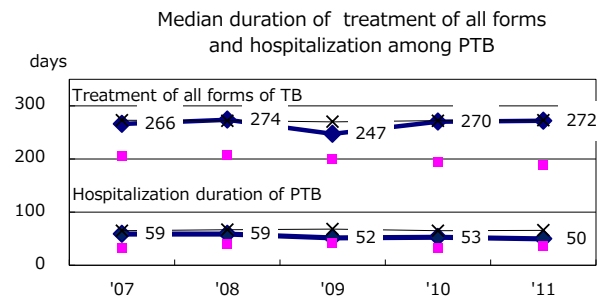
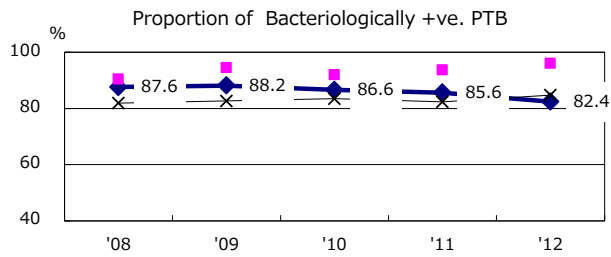
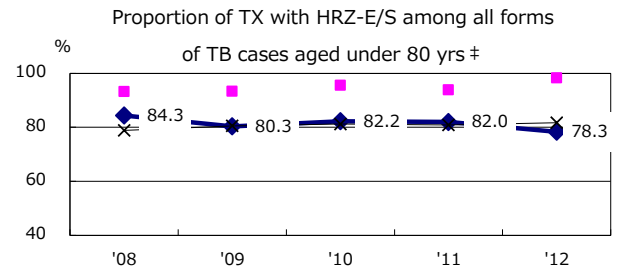
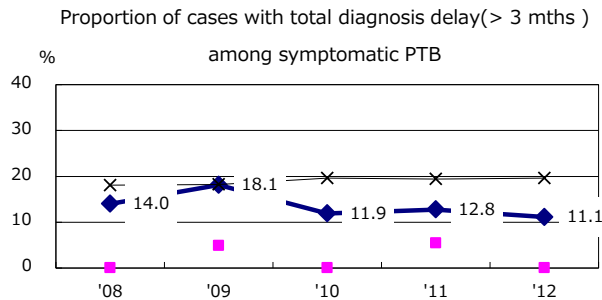
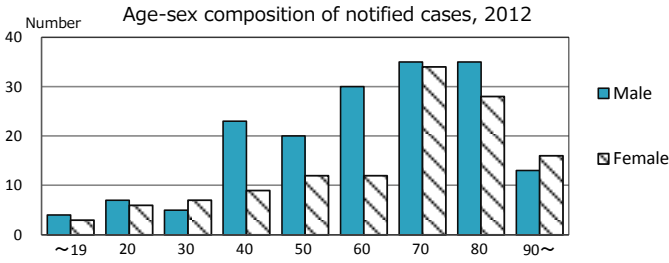
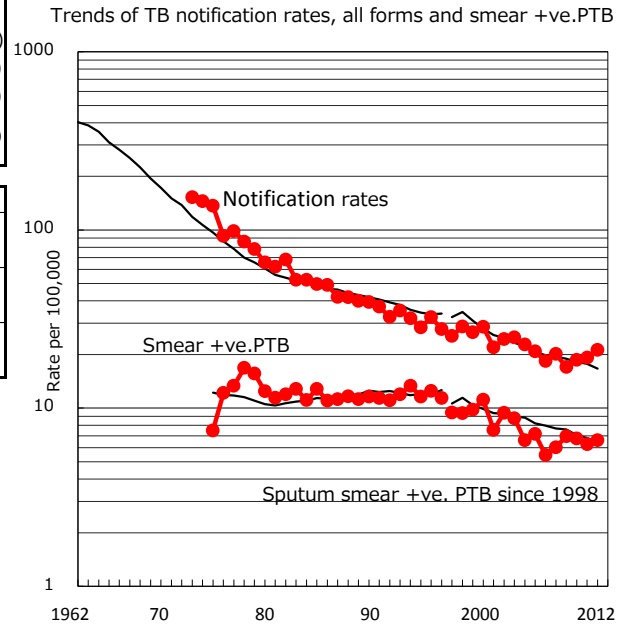


TB statistics in 2012 (Population in Okinawa 1,408,954)	
Among newly registered : (Japan)	
Foreign borns	5 1.7% (5.0%)
TB cases with homeless history	2 0.7% (1.6%)
Male aged 35-59, without job and receiving public assistance	8 16.7% (10.8%)

Trends	'08	'09	'10	'11	'12
Notified cases	277	235	260	269	299
Rate per 100,000 population	20.1	17.0	18.7	19.2	21.2
Sputum smear +ve. pul.cases	83	96	94	88	93
Rate per 100,000 population	6.0	6.9	6.8	6.3	6.6
Latent Tuberculosis Infection	21	40	45	94	140
Rate per 100,000 population	1.5	2.9	3.2	6.7	9.9



PTB : pumonary TB					
† Excluding unknown delay(%)	'08	'09	'10	'11	'12
	2.1	3.8	0.0	0.0	3.6
‡ Excluding unknown Tx(%)	'08	'09	'10	'11	'12
	2.5	0.6	1.1	1.6	1.9