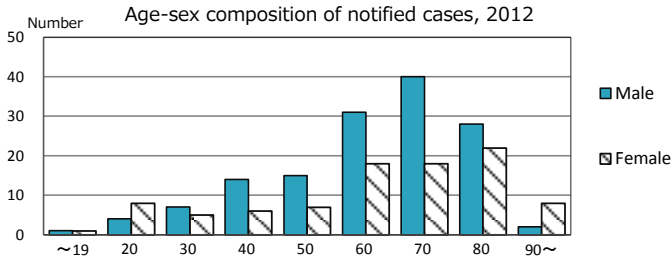
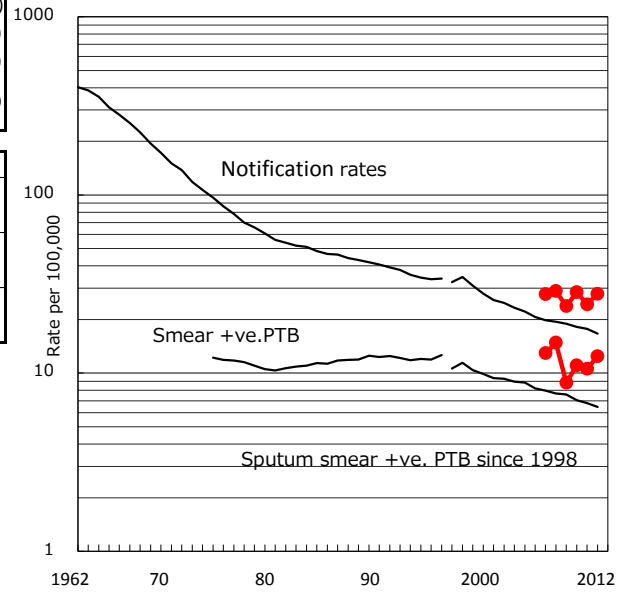


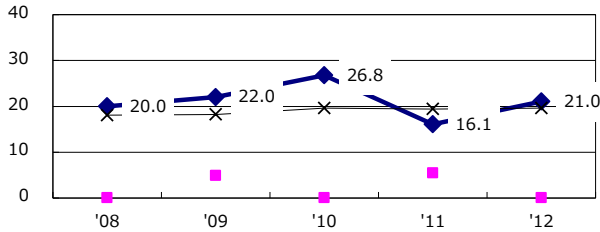
TB statistics in 2012 (Population in Sakai city 842,426)	
Among newly registered : (Japan)	
Foreign borns	4 1.7% (5.0%)
TB cases with homeless history	2 0.9% (1.6%)
Male aged 35-59, without job and receiving public assistance	3 8.3% (10.8%)

Trends	'08	'09	'10	'11	'12
Notified cases	242	199	240	205	235
Rate per 100,000 population	28.9	23.8	28.5	24.3	27.9
Sputum smear +ve. pul.cases	124	74	93	89	105
Rate per 100,000 population	14.8	8.8	11.0	10.6	12.5
Latent Tuberculosis Infection	64	29	52	69	74
Rate per 100,000 population	7.7	3.5	6.2	8.2	8.8

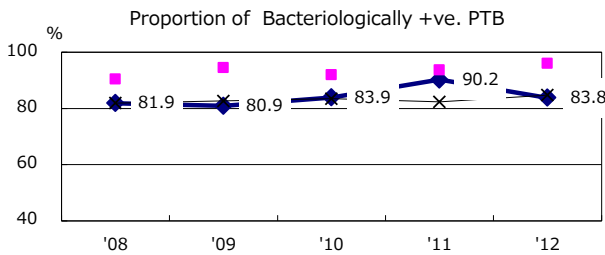
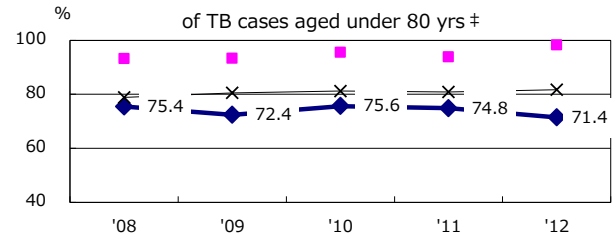
Trends of TB notification rates, all forms and smear +ve.PTB



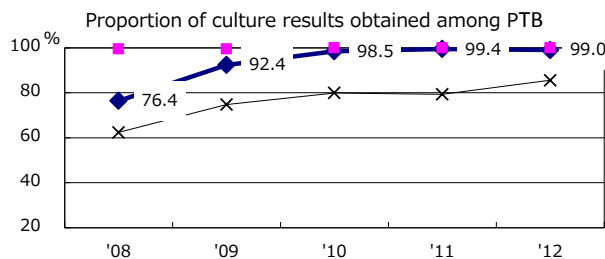
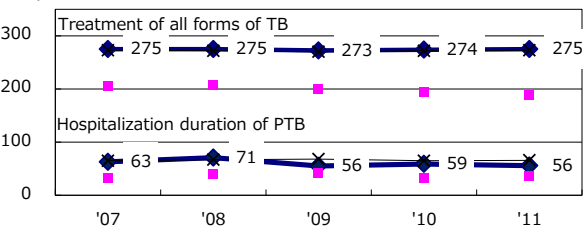
Proportion of cases with total diagnosis delay (> 3 mths) among symptomatic PTB



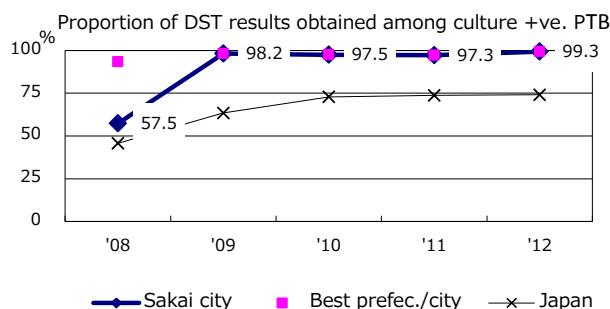
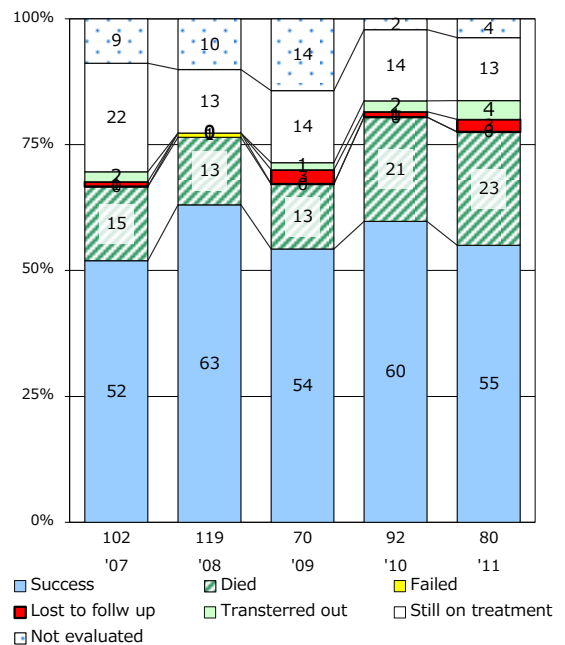
Proportion of TX with HRZ-E/S among all forms of TB cases aged under 80 yrs †



Median duration of treatment of all forms and hospitalization among PTB



Treatment outcomes of new sputum smear +ve.TB



PTB : pumonyary TB

† Excluding unknown delay(%)

	'08	'09	'10	'11	'12
Excluding unknown delay(%)	81.6	55.4	9.9	0.0	1.3

‡ Excluding unknown Tx(%)

	'08	'09	'10	'11	'12
Excluding unknown Tx(%)	0.0	0.0	0.0	0.0	0.0