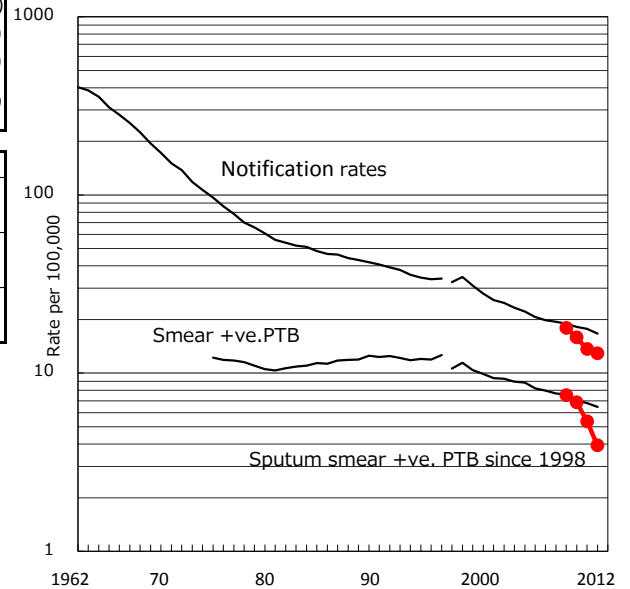


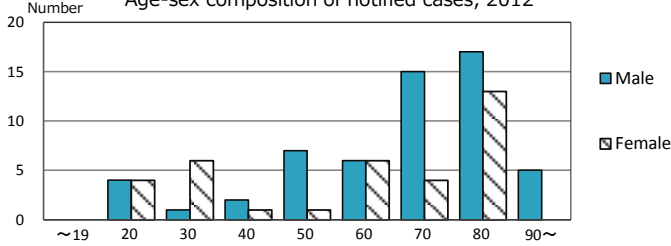
TB statistics in 2012 (Population in Okayama city 713,122)	
Among newly registered :	(Japan)
Foreign borns	4 4.3% (5.0%)
TB cases with homeless history	0 0.0% (1.6%)
Male aged 35-59, without job and receiving public assistance	2 20.0% (10.8%)

Trends	'08	'09	'10	'11	'12
Notified cases	-	126	111	97	92
Rate per 100,000 population	-	17.9	15.9	13.6	12.9
Sputum smear +ve. pul.cases	-	53	48	38	28
Rate per 100,000 population	-	7.5	6.9	5.3	3.9
Latent Tuberculosis Infection	-	29	35	142	76
Rate per 100,000 population	-	4.1	5.0	20.0	10.7

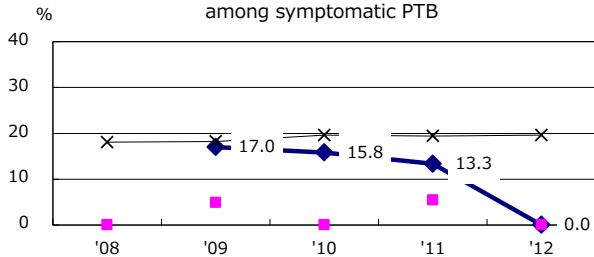
Trends of TB notification rates, all forms and smear +ve.PTB



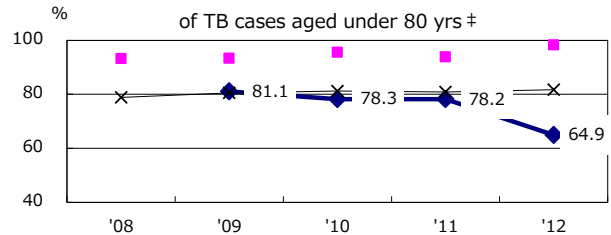
Age-sex composition of notified cases, 2012



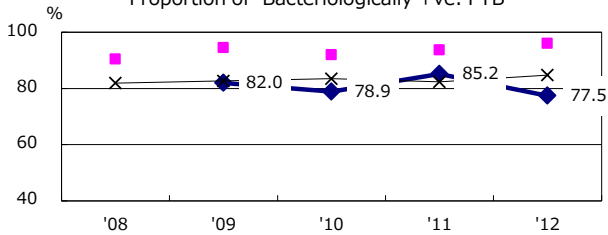
Proportion of cases with total diagnosis delay (> 3 mths) among symptomatic PTB



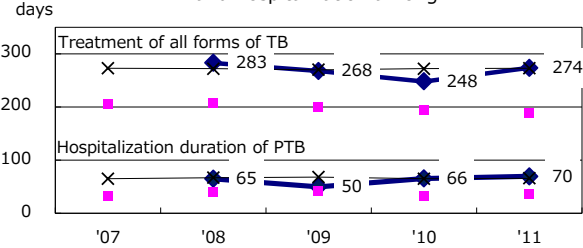
Proportion of TX with HRZ-E/S among all forms of TB cases aged under 80 yrs †



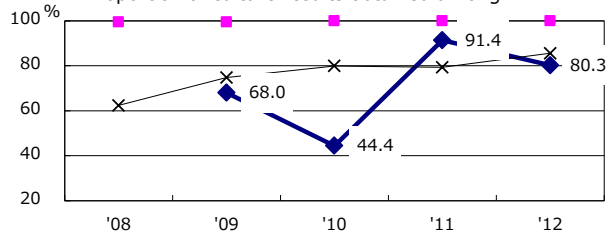
Proportion of Bacteriologically +ve. PTB



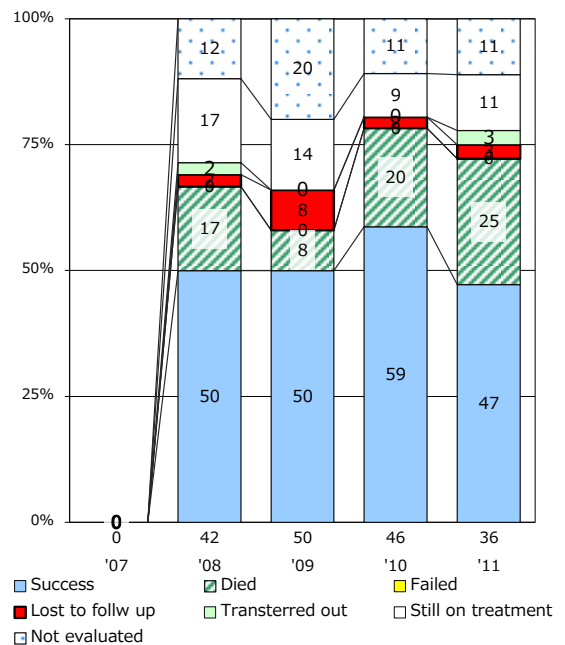
Median duration of treatment of all forms and hospitalization among PTB



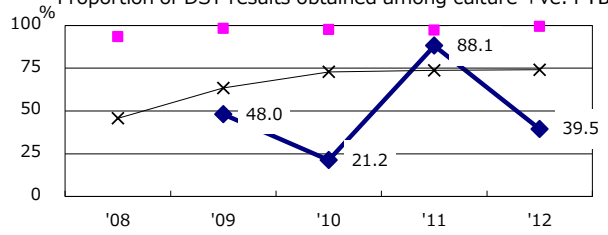
Proportion of culture results obtained among PTB



Treatment outcomes of new sputum smear +ve.TB



Proportion of DST results obtained among culture +ve. PTB



◆ Okayama city ■ Best pref./city × Japan

PTB : pumonyary TB

† Excluding unknown delay(%)	'08	'09	'10	'11	'12
	-	24.3	5.0	75.0	73.3

‡ Excluding unknown Tx(%)	'08	'09	'10	'11	'12
	-	6.3	5.5	6.8	0.0