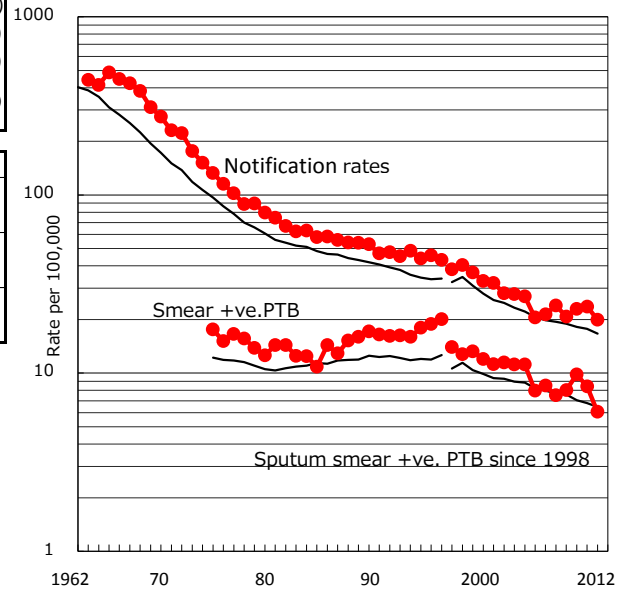


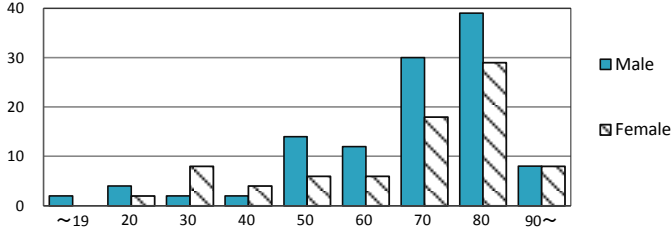
TB statistics in 2012 ( Population in Kitakyushu city 971,788 )	
Among newly registered :	(Japan)
Foreign borns	3 1.5% (5.0%)
TB cases with homeless history	0 0.0% (1.6%)
Male aged 35-59, without job and receiving public assistance	1 5.6% (10.8%)

Trends	'08	'09	'10	'11	'12
Notified cases	236	204	224	230	194
Rate per 100,000 population	24.0	20.8	22.9	23.6	20.0
Sputum smear +ve. pul.cases	74	79	96	82	59
Rate per 100,000 population	7.5	8.0	9.8	8.4	6.1
Latent Tuberculosis Infection	17	11	10	40	71
Rate per 100,000 population	1.7	1.1	1.0	4.1	7.3

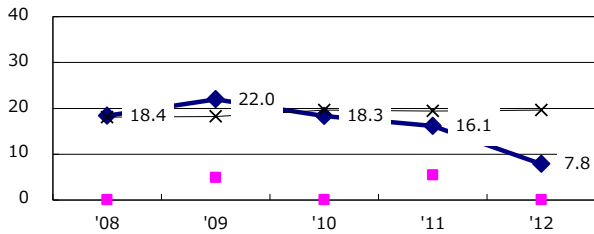
Trends of TB notification rates, all forms and smear +ve.PTB



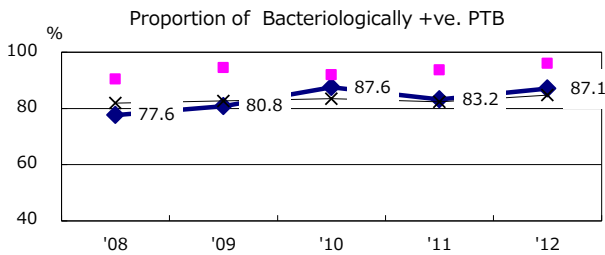
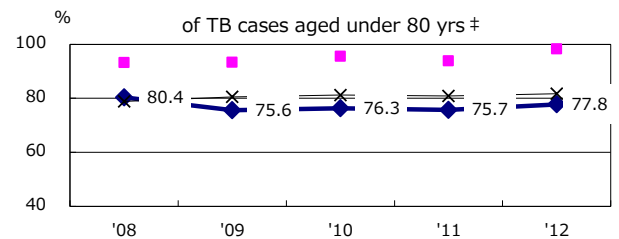
Age-sex composition of notified cases, 2012



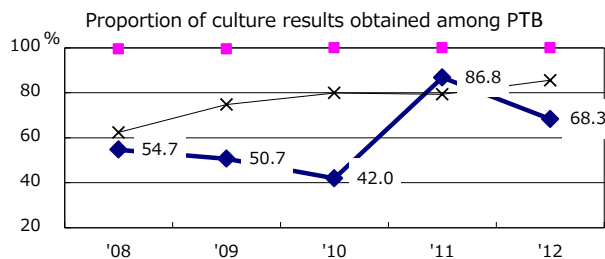
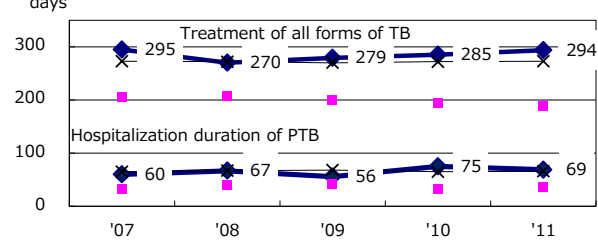
Proportion of cases with total diagnosis delay (> 3 mths) among symptomatic PTB



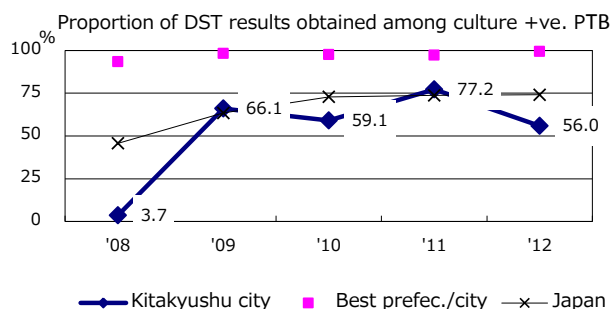
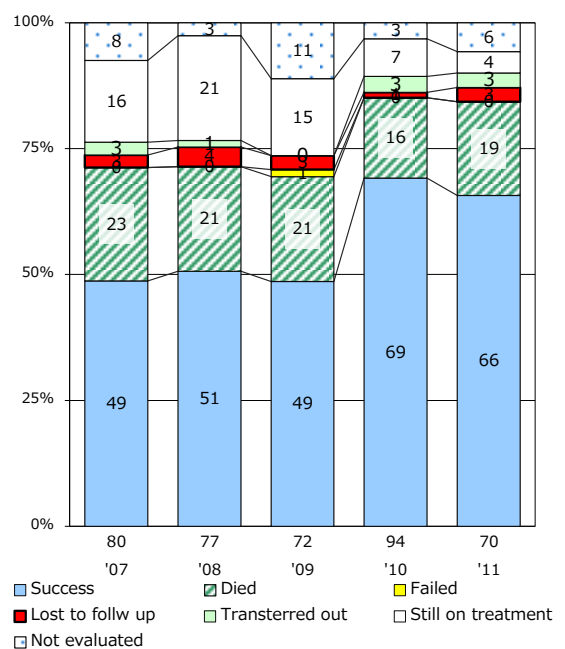
Proportion of TX with HRZ-E/S among all forms of TB cases aged under 80 yrs †



Median duration of treatment of all forms and hospitalization among PTB



Treatment outcomes of new sputum smear +ve.TB



PTB : pumonyary TB

† Excluding unknown delay(%)	'08	'09	'10	'11	'12
	60.5	66.9	45.0	4.6	53.2

‡ Excluding unknown Tx(%)	'08	'09	'10	'11	'12
	5.4	0.0	0.0	1.4	1.8