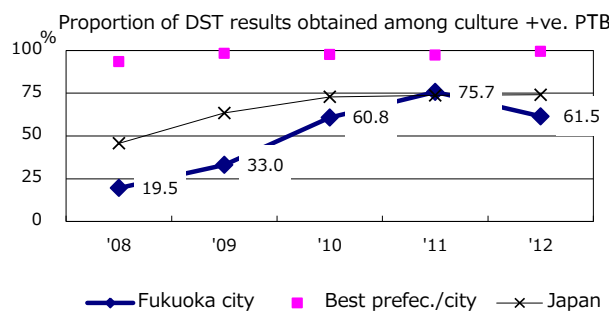
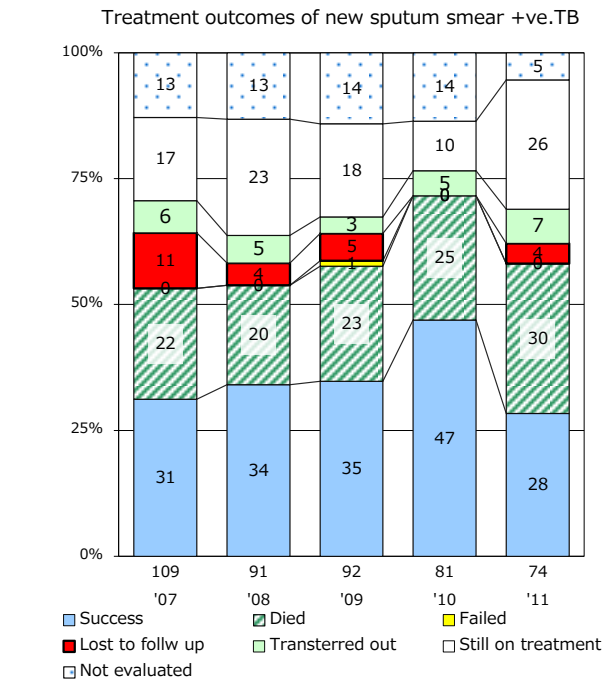
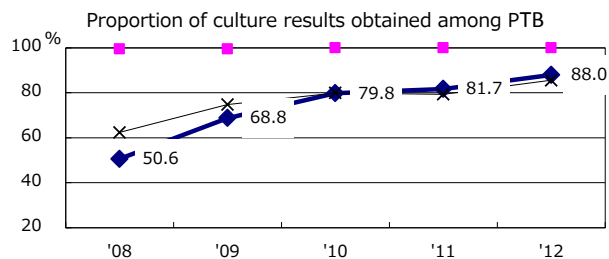
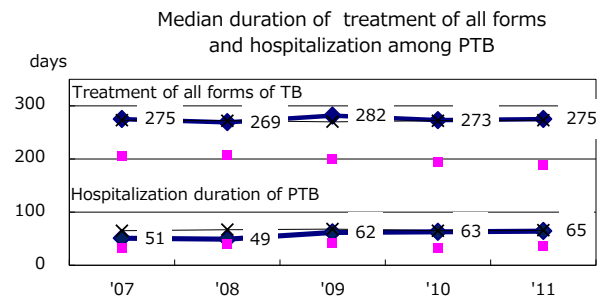
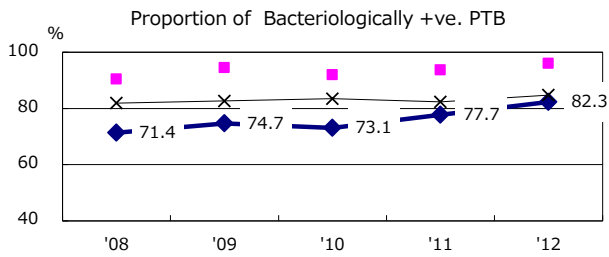
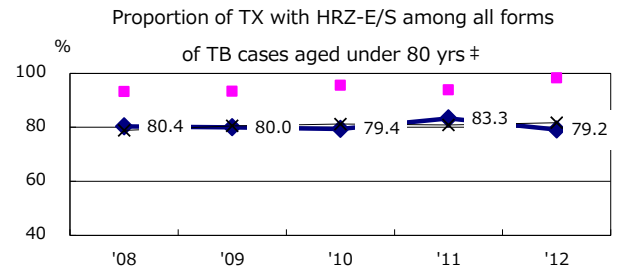
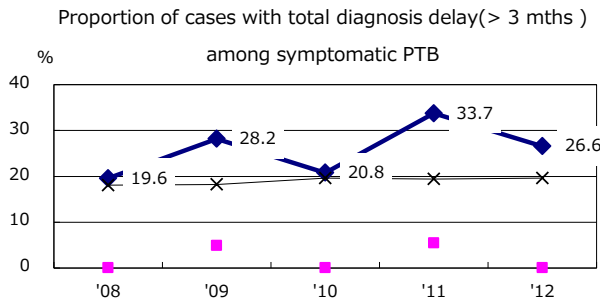
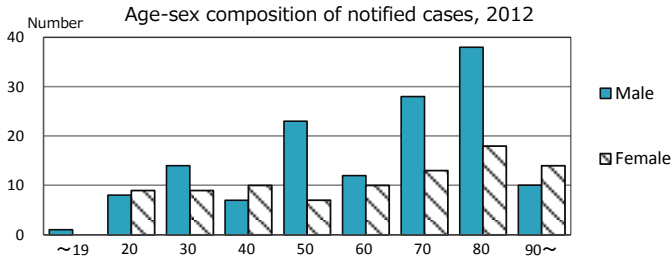
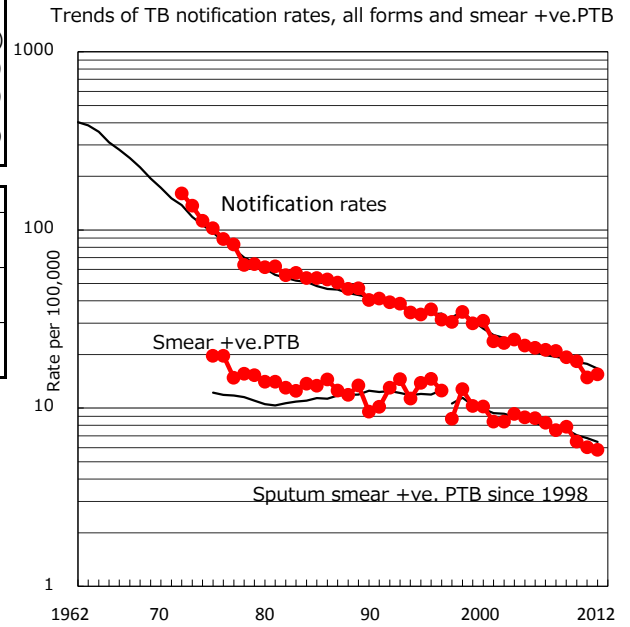


TB statistics in 2012 (Population in Fukuoka city 1,492,248)	
Among newly registered : (Japan)	
Foreign borns	15 6.5% (5.0%)
TB cases with homeless history	6 2.6% (1.6%)
Male aged 35-59, without job and receiving public assistance	7 15.9% (10.8%)

Trends	'08	'09	'10	'11	'12
Notified cases	301	280	268	220	231
Rate per 100,000 population	20.9	19.3	18.3	14.9	15.5
Sputum smear +ve. pul.cases	108	114	95	89	87
Rate per 100,000 population	7.5	7.9	6.5	6.0	5.8
Latent Tuberculosis Infection	41	39	41	123	100
Rate per 100,000 population	2.9	2.7	2.8	8.3	6.7



PTB : pumonary TB

† Excluding unknown delay(%)	'08	'09	'10	'11	'12
	47.7	54.4	51.0	39.9	44.8

‡ Excluding unknown Tx(%)	'08	'09	'10	'11	'12
	3.5	0.5	1.0	1.3	1.3