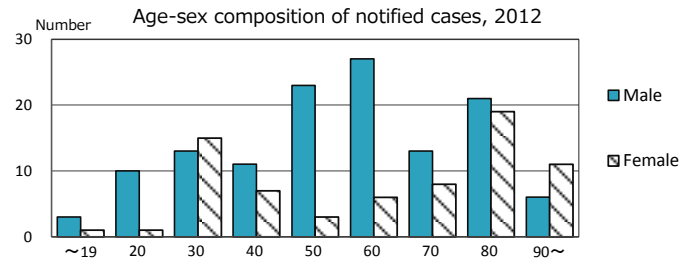
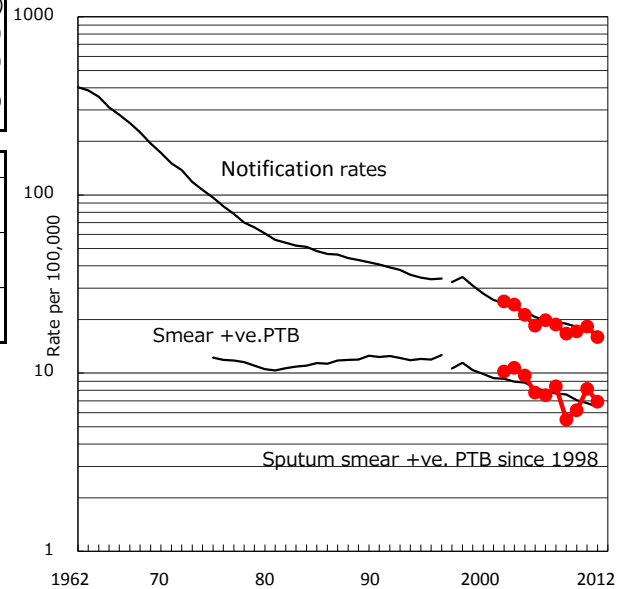


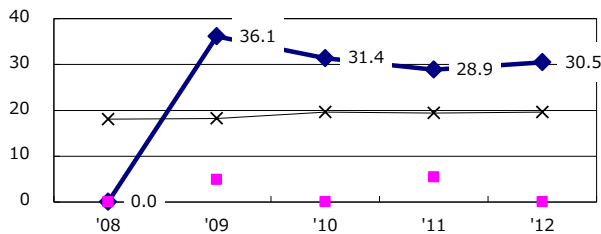
TB statistics in 2012 (Population in Saitama city 1,243,826)	
Among newly registered : (Japan)	
Foreign borns	16 8.1% (5.0%)
TB cases with homeless history	7 3.5% (1.6%)
Male aged 35-59, without job and receiving public assistance	7 14.9% (10.8%)

Trends	'08	'09	'10	'11	'12
Notified cases	227	203	211	226	198
Rate per 100,000 population	18.8	16.6	17.1	18.3	15.9
Sputum smear +ve. pul.cases	102	67	76	101	86
Rate per 100,000 population	8.4	5.5	6.2	8.2	6.9
Latent Tuberculosis Infection	47	23	56	92	60
Rate per 100,000 population	3.9	1.9	4.5	7.4	4.8

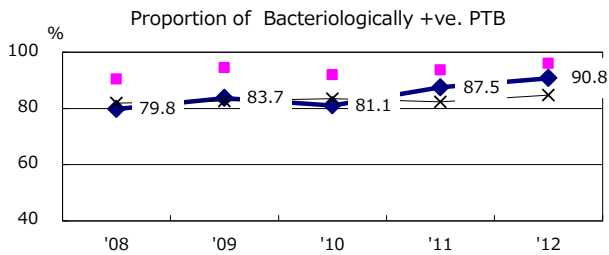
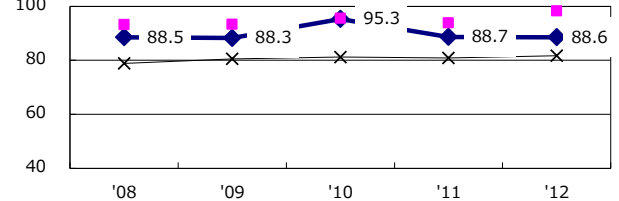
Trends of TB notification rates, all forms and smear +ve.PTB



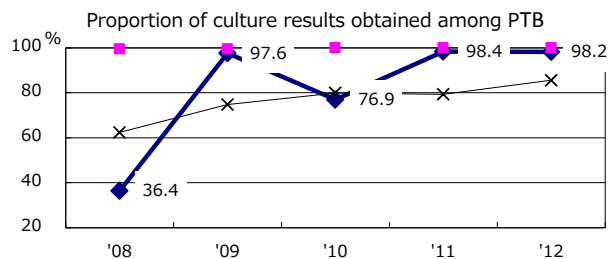
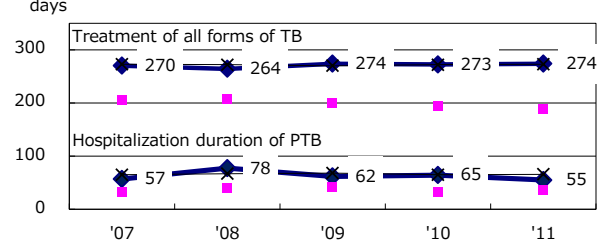
Proportion of cases with total diagnosis delay (> 3 mths) among symptomatic PTB



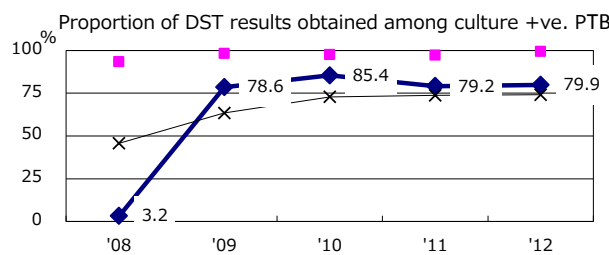
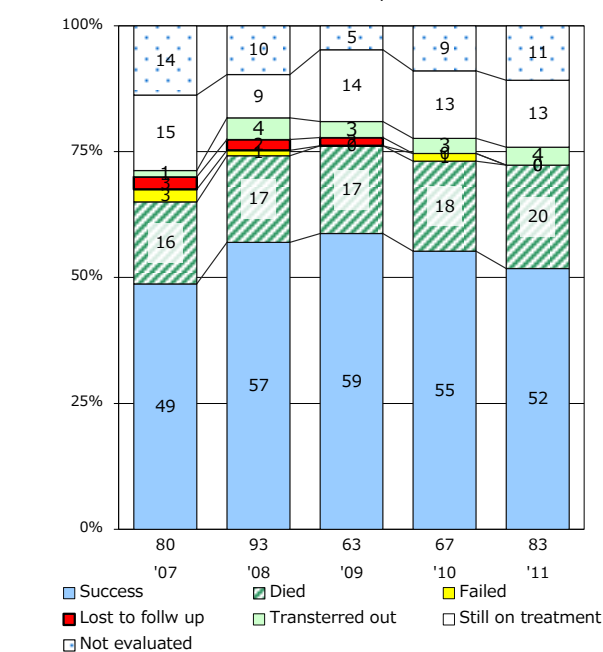
Proportion of TX with HRZ-E/S among all forms of TB cases aged under 80 yrs †



Median duration of treatment of all forms and hospitalization among PTB



Treatment outcomes of new sputum smear +ve.TB



PTB : pumonyary TB

† Excluding unknown delay(%)	'08	'09	'10	'11	'12
	94.0	1.7	6.4	7.5	14.6

‡ Excluding unknown Tx(%)	'08	'09	'10	'11	'12
	2.0	0.6	2.3	3.0	0.7