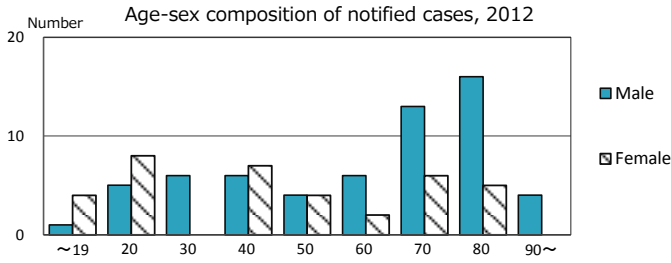
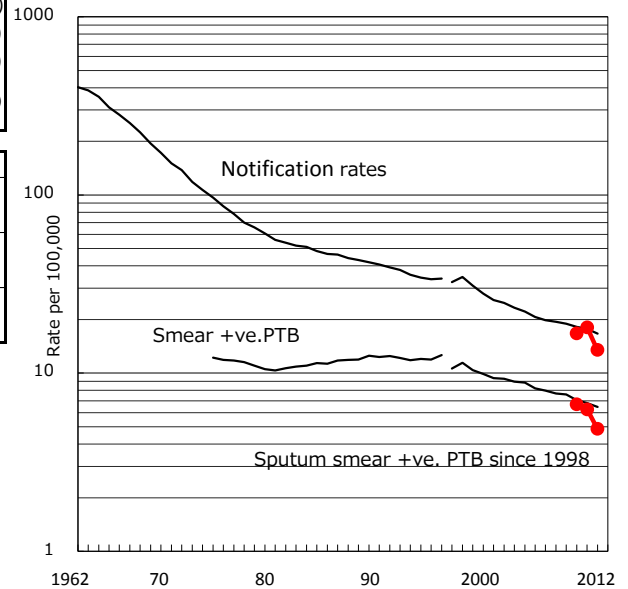


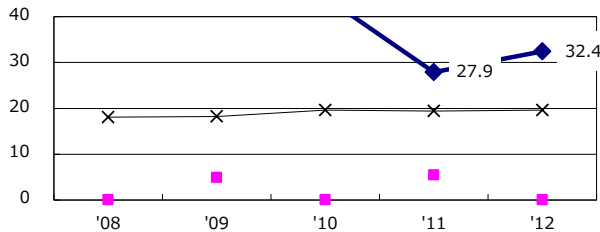
TB statistics in 2012 (Population in Sagamihara city 719,709)	
Among newly registered : (Japan)	
Foreign borns	6 6.2% (5.0%)
TB cases with homeless history	0 0.0% (1.6%)
Male aged 35-59, without job and receiving public assistance	2 12.5% (10.8%)

Trends	'08	'09	'10	'11	'12
Notified cases	-	-	120	130	97
Rate per 100,000 population	-	-	16.7	18.1	13.5
Sputum smear +ve. pul.cases	-	-	48	45	35
Rate per 100,000 population	-	-	6.7	6.3	4.9
Latent Tuberculosis Infection	-	-	34	42	48
Rate per 100,000 population	-	-	4.7	5.8	6.7

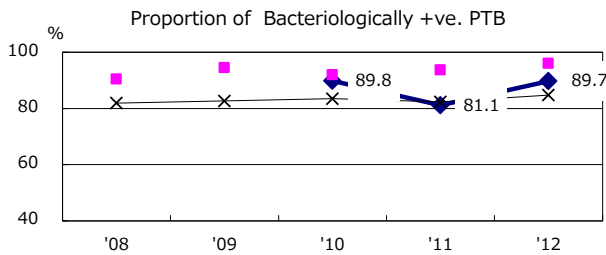
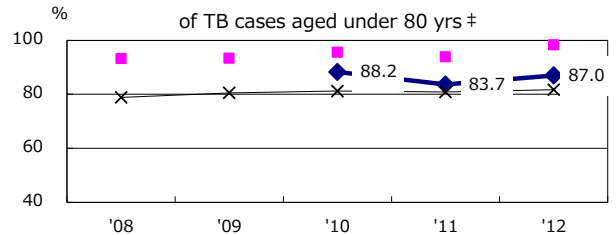
Trends of TB notification rates, all forms and smear +ve.PTB



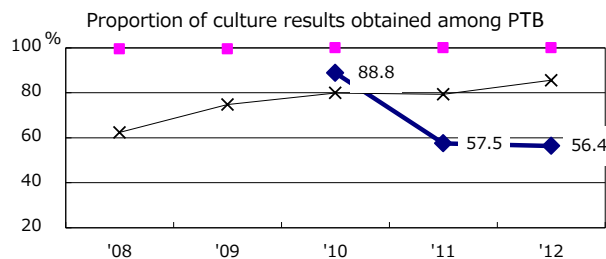
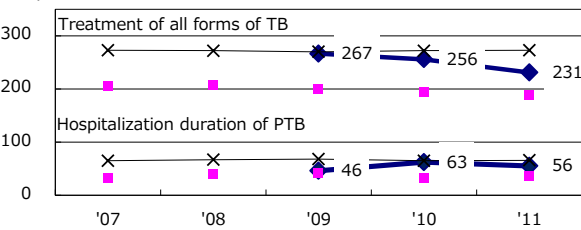
Proportion of cases with total diagnosis delay (> 3 mths) among symptomatic PTB



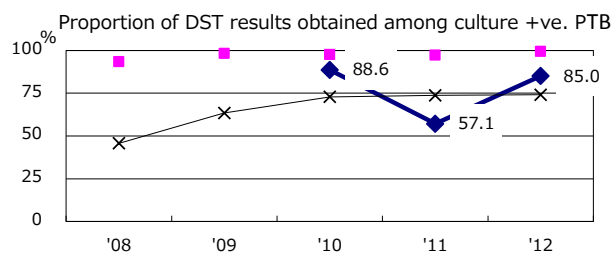
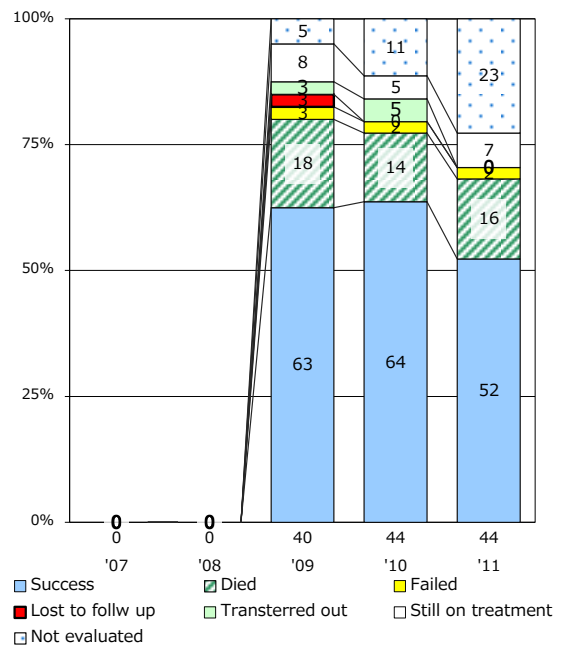
Proportion of TX with HRZ-E/S among all forms of TB cases aged under 80 yrs †



Median duration of treatment of all forms and hospitalization among PTB



Treatment outcomes of new sputum smear +ve.TB



◆ Sagamihara city ■ Best prefec./city × Japan

PTB : pumonyary TB

† Excluding unknown delay(%)	'08	'09	'10	'11	'12
	-	-	9.0	32.8	31.5

‡ Excluding unknown Tx(%)	'08	'09	'10	'11	'12
	-	-	1.0	2.8	4.2