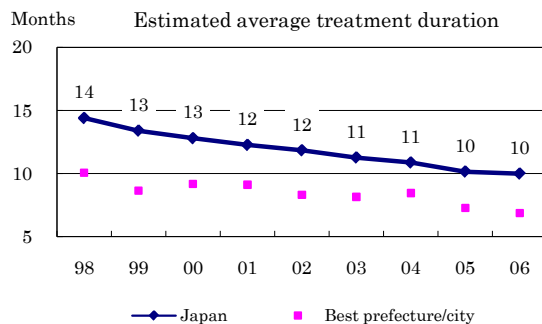
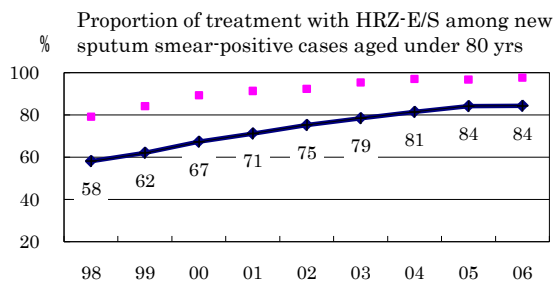
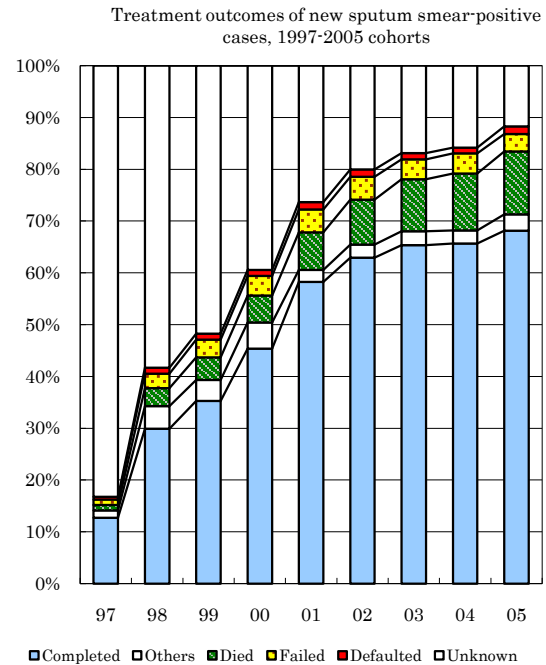
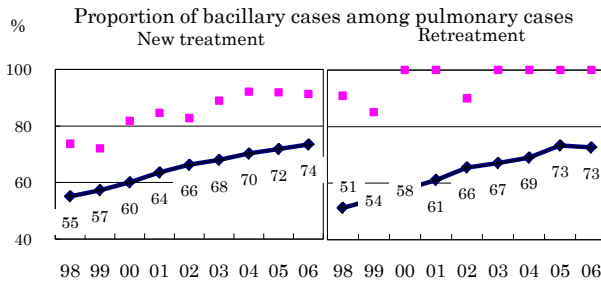
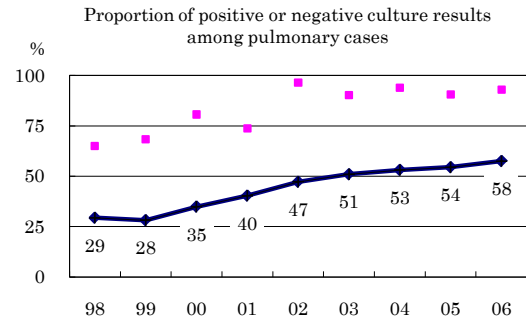
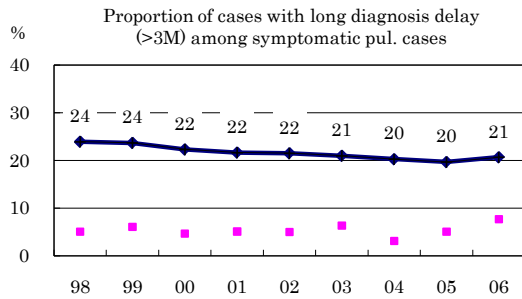
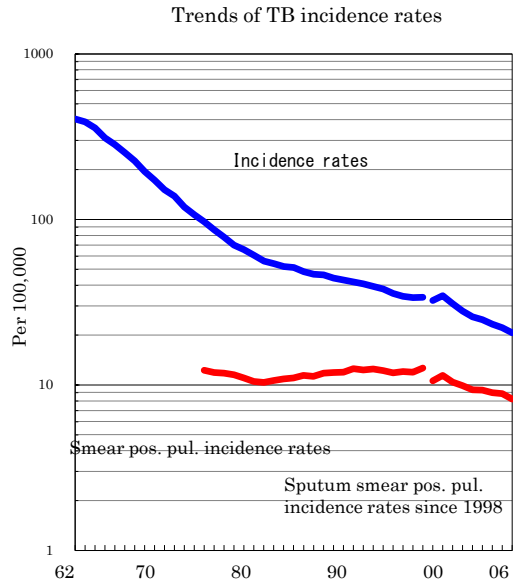
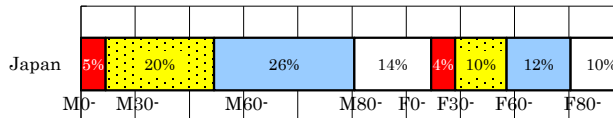


Japan

TB statistics in 2006			
Population	127,769,510		
Foreigners' TB	920	3.5%	
Estimated homeless TB among male cases aged 30-59 yrs	468	8.9%	

Trends	02	03	04	05	06
Notified cases	32,828	31,638	29,736	28,319	26,384
Rate per 100,000	25.8	24.8	23.3	22.2	20.6
Sputum smear pos. pul. cases	11,933	11,857	11,445	11,318	10,492
Rate per 100,000	9.4	9.3	9.0	8.9	8.2

Age-sex composition of notified cases, 2006



	n= 11,642	10,730	11,414	10,348	10,134	9,587	9,581	9,311	9,230
Completed	13	30	35	45	58	63	65	66	68
Others	1	4	4	5	2	3	3	3	3
Died	1	3	4	5	7	9	10	11	12
Failed	1	3	3	4	4	4	4	4	3
Defaulted	0	1	1	1	1	1	1	1	1
Unknown	83	58	52	39	26	20	17	16	12